

Citation for the published version:

Burningham, B., Marley, M. S., Line, M. R., Lupu, R., Visscher, C., Morley, C. V., ... Freedman, R. (2017). Retrieval of atmospheric properties of cloudy L dwarfs. *Monthly Notices of the Royal Astronomical Society*, 470(1), 1177–1197.
DOI: 10.1093/mnras/stx1246

Document Version: Accepted Version

Link to the final published version available at the publisher:

<https://doi.org/10.1093/mnras/stx1246>

This article has been accepted for publication in *Monthly Notices of the Royal Astronomical Society*. © 2017 The Author(s). Published by Oxford University Press on behalf of the Royal Astronomical Society. All rights reserved.

General rights

Copyright© and Moral Rights for the publications made accessible on this site are retained by the individual authors and/or other copyright owners.

Please check the manuscript for details of any other licences that may have been applied and it is a condition of accessing publications that users recognise and abide by the legal requirements associated with these rights. You may not engage in further distribution of the material for any profitmaking activities or any commercial gain. You may freely distribute both the url (<http://uhra.herts.ac.uk/>) and the content of this paper for research or private study, educational, or not-for-profit purposes without prior permission or charge.

Take down policy

If you believe that this document breaches copyright please contact us providing details, any such items will be temporarily removed from the repository pending investigation.

Enquiries

Please contact University of Hertfordshire Research & Scholarly Communications for any enquiries at rsc@herts.ac.uk

Retrieval of atmospheric properties of cloudy L dwarfs

Ben Burningham^{1,2*}, M. S. Marley¹, M. R. Line^{3,1}, R. Lupu^{1,4}, C. Visscher^{5,6},
C. V. Morley⁷, D. Saumon⁸, R. Freedman^{1,9}

¹ NASA Ames Research Center, Mail Stop 245-3, Moffett Field, CA 94035, USA

² Centre for Astrophysics Research, School of Physics, Astronomy and Mathematics, University of Hertfordshire, Hatfield AL10 9AB

³ School of Earth & Space Exploration, Arizona State University, Tempe AZ 85287, USA

⁴ Bay Area Environmental Research Institute, 625 2nd Street, Suite 209, Petaluma, CA 94952, USA

⁵ Department of Chemistry, Dordt College, Sioux Center, IA 51250, USA

⁶ Space Science Institute, Boulder, CO, USA

⁷ Department of Astronomy, Harvard University, Cambridge, MA 02138, USA

⁸ Los Alamos National Laboratory, P.O. Box 1663, MS F663, Los Alamos, NM 87545, USA

⁹ SETI Institute, Mountain View, CA 94043, USA

19 May 2017

ABSTRACT

We present the first results from applying the spectral inversion technique in the cloudy L dwarf regime. Our new framework provides a flexible approach to modelling cloud opacity which can be built incrementally as the data requires, and improves upon previous retrieval experiments in the brown dwarf regime by allowing for scattering in two stream radiative transfer. Our first application of the tool to two mid-L dwarfs is able to reproduce their near-infrared spectra far more closely than grid models. Our retrieved thermal, chemical, and cloud profiles allow us to estimate $T_{\text{eff}} = 1796^{+23}_{-25}$ K and $\log g = 5.21^{+0.05}_{-0.08}$ for 2MASS J05002100+0330501 and for 2MASSW J2224438-015852 we find $T_{\text{eff}} = 1723^{+18}_{-19}$ K and $\log g = 5.31^{+0.04}_{-0.08}$, in close agreement with previous empirical estimates. Our best model for both objects includes an optically thick cloud deck which passes $\tau_{\text{cloud}} \geq 1$ (looking down) at a pressure of around 5 bar. The temperature at this pressure is too high for silicate species to condense, and we argue that corundum and/or iron clouds are responsible for this cloud opacity. Our retrieved profiles are cooler at depth, and warmer at altitude than the forward grid models that we compare, and we argue that some form of heating mechanism may be at work in the upper atmospheres of these L dwarfs. We also identify anomalously high CO abundance in both targets, which does not correlate with the warmth of our upper atmospheres or our choice of cloud model, and find similarly anomalous alkali abundance for one of our targets. These anomalies may reflect unrecognised shortcomings in our retrieval model, or inaccuracies in our gas phase opacities.

Key words: stars: low-mass, brown dwarfs - exoplanets

1 INTRODUCTION

The study of brown dwarf atmospheres has been dominated by fitting the spectral predictions of grids of self-consistent 1-dimensional radiative-convective equilibrium atmosphere models (hereafter “grid models”) to optical and near-infrared spectroscopic and photometric observations, and thence inferring properties of the target under study (e.g. Cushing et al. 2008; Manjavacas et al. 2014; Rice et al. 2015). In a handful of cases, so-called “benchmark systems”, properties for substellar targets in binary systems have been

estimated by association with a stellar primary, and the quality of fit used to critically evaluate the grid models (e.g. Burningham et al. 2009, 2011, 2013). These approaches are hindered by the difficulty of identifying the factors that drive poor matches between observation and synthetic spectra from a range of possibilities that arise from the inherent complexity of the grid models and atmospheres to which they relate.

The lineage of these forward model grids can typically be traced back to the pioneering efforts of a handful of teams who either adapted Solar system planetary atmosphere codes to higher temperature and gravity regimes (e.g. Marley et al. 1996; Saumon et al. 2012), or extended cool

* E-mail: B.Burningham@herts.ac.uk

stellar models downwards (e.g. Allard & Hauschildt 1995; Allard et al. 2011; Burrows et al. 1993, 2006; Tsuji et al. 1996; Tsuji 2002). Both approaches rely on an iterative process of refining the thermal structure under the assumption of radiative-convective equilibrium. An initial guess for the T(P) profile is made, opacities calculated and convective and radiative energy transport determined to estimate a new profile. This continues until the profile converges. This process typically employs a combination of elements, including: a thermochemical model to self-consistently estimate gas volume mixing ratios (and thus opacity) as a function of (T, P) on the profile; a cloud model to determine condensate opacity along the profile; a convection model; a radiative transfer solver. Each of these elements involves a variety of decisions regarding appropriate approximations, as does the iterative process itself. A comprehensive review of the current state-of-the-art of grid modelling may be found in Marley & Robinson (2015), which also highlights some key areas of uncertainty in these approaches.

Various shortcomings in the predictions from grid models have been identified both from detailed studies of small numbers of benchmark systems, and also through wider comparisons of the broadband photometric colours of the population across the L and T spectral sequences. For example, the BT-Settl model grids (Allard et al. 2011) have difficulty reproducing the general slope of near-infrared spectra of L dwarfs and specifically the shape of the *H* band peak (Manjavacas et al. 2014, 2016), although they are able to reproduce late-T dwarf spectral energy distributions quite well (e.g. Burningham et al. 2011). In the L dwarf regime, there are a number of objects that show discrepancies of several 100K between the T_{eff} inferred through grid model fitting, and that found from bolometric luminosity and radius estimates (including an object we consider in this paper: 2MASSW J2224438-015852; Stephens et al. 2009). This presumably arises from either the grid models' poor fit to the L dwarfs' SED due to some unforeseen property of the targets, or some unaccounted for physical process(es).

The population of L dwarfs in the solar neighbourhood displays a considerable diversity of spectrophotometric properties which have been variously associated with low-gravity (red *J - K* colours; e.g. Faherty et al. 2013; Allers & Liu 2013), low-metallicity and/or high-gravity (blue *J - K* colours; e.g. Faherty et al. 2009), unusual cloud properties (blue *J - K* colours; e.g. Burgasser et al. 2008; Cushing et al. 2010; Marley et al. 2010). Given the relatively narrow range of compositions (e.g. ± 0.5 dex) and gravities (± 1 dex) that solar neighbourhood brown dwarfs are expected to occupy, this diversity likely reflects the complexity inherent to the interplay of chemistry, atmospheric dynamics and clouds. This complexity is akin to that expected for exoplanets, and already seen in Solar system atmospheres. Cloudy L dwarfs are thus outstanding laboratories for examining and testing techniques to explore this complexity and relate observational groups and behaviours to particular drivers of atmospheric chemistry and physics.

Spectral inversion techniques (or atmospheric retrievals) provide the opportunity to confront forward grid models with observations in a more nuanced manner than simply comparing model spectra to data. Originally developed for remote sensing Earth's (e.g. Rodgers 1976, 2000) and Solar system planetary atmospheres (e.g. Irwin et al.

2008), retrievals have been used to study transiting exoplanets (e.g. Barstow et al. 2013; Line et al. 2013), directly imaged planets Lee et al. (2013), and simple cloud-free brown dwarf atmospheres (Line et al. 2014, 2015). In the case of cloudy brown dwarfs and directly imaged exoplanets, this technique allows for empirical constraints to be placed directly on the gas volume mixing ratios, thermal profile, and cloud location and opacity. These can be compared directly to the outputs of grid models, allowing detailed examination and evaluation of differing approaches to approximating the atmospheric physics of brown dwarfs and giant exoplanets.

In this paper we introduce a new framework for performing retrievals in the cloudy L dwarf regime, and present its first application to two mid-L dwarfs. Performing retrievals in this regime is more challenging than in the cloud-free late-T regime that has been explored by Line et al. (2014, 2015) with this technique. Whereas T dwarf spectra have bright peaks in the opacity windows between the deep absorption bands due to water and methane, mid-L dwarf spectra have weaker contrast in these regions, which is symptomatic of a photosphere that spans a relatively narrower temperature and pressure range. As a result careful validation is required to ensure that our retrieved cloud and thermal profiles stand up to scrutiny.

In Section 2 we introduce our framework and outline its key details. In Section 3 we describe our validation of the technique using simulated targets. Section 4 describes the first application of this tool to two mid-L dwarfs, and Section 5 rounds off our discussion of our results and summarises our conclusions.

2 A TOOL FOR RETRIEVING PROPERTIES OF CLOUDY ATMOSPHERES

The two principal structures in a retrieval framework are the forward model and the retrieval model. The forward model produces the spectrum based on a set of atmospheric parameters, which are typically a mixture of parameters to be retrieved and others for which values are assumed or otherwise pre-determined. The retrieval model performs the process of evaluating the goodness of fit for forward model outputs and proposing new values to effectively sample the posterior probability distribution of the parameters to be retrieved. In the following sections we outline the key features of each of these elements.

2.1 The forward model

The essence of the forward model can be reduced to a set of three key elements: the radiative transfer solver, the thermal profile, and the opacity and scattering properties in each layer as a function of wavelength. Our forward model solves the radiative transfer to evaluate the emergent flux from a layered atmosphere in the two stream source function technique of Toon et al. (1989), including scattering, as first introduced by McKay et al. (1989) and subsequently used by e.g. Marley et al. (1996); Saumon & Marley (2008); Morley et al. (2012). We set up a 64 layer atmosphere (65 levels) with geometric mean pressures in the range $\log P(\text{bar}) = -4$ to 2.3, spaced at 0.1 dex intervals.

2.1.1 Thermal profile

The thermal profile can be parameterised in a number of ways, or not parameterised at all and the temperature of each layer retrieved independently. The latter option must be treated with caution since the data alone are unlikely to adequately constrain the profile shape, and unphysical solutions with significant discontinuity are likely to result without applying some sort of smoothing (e.g. Irwin et al. 2008; Line et al. 2014). An alternative is to sample the atmospheric profile at wider pressure steps than are required for accurate radiative transfer calculations, and then interpolate the full profile from these. This removes the risk of small scale fluctuations in the profile, and reduces the number of parameters for the retrieval. However, even low resolution interpolated profiles are prone to oscillatory morphologies, and smoothing is thus still desirable. In an attempt to avoid this requirement, Line et al. (2015) used a low-resolution thermal profile and spline-interpolation to the full resolution pressure scale, but penalised the second derivative of the final curve in the retrieval. This has the effect of minimising the jaggedness of the profile unless the benefit to improving the fit is significant. This method has been tested within our framework, however early experiments in the L dwarf regime found that the data rarely justified anything other than an entirely linear profile, and the retrievals did not converge. This is due to the spectral contrast in the data being unable to overcome the penalisation of the second derivative in the Gaussian Process used by Line et al. (2015) to drive the profile away from the linear form that it is inherently biased towards.

Instead, we have adopted a parameterisation for our thermal profile, further reducing the number of parameters required to describe the thermal structure. The five and six variable parameterisations put forward by Madhusudhan & Seager (2009) are able to fit most physically plausible thermal profiles. However, since they consist of a set of joined exponential curves this method will not retrieve profiles with local discontinuities. In the Madhusudhan & Seager (2009) scheme, the atmosphere is split into three zones, whose pressure and temperature are related as:

$$\begin{aligned} P_0 < P < P_1 : P &= P_0 e^{\alpha_1(T-T_0)^{\frac{1}{2}}} \text{ (Zone 1)} \\ P_1 < P < P_3 : P &= P_2 e^{\alpha_2(T-T_2)^{\frac{1}{2}}} \text{ (Zone 2)} \\ P > P_3 : T &= T_3 \text{ (Zone 3)} \end{aligned} \quad (1)$$

where P_0 , T_0 the pressure and temperature at the top of the atmosphere, which becomes isothermal with temperature T_3 at pressure P_3 . In its most general form, a thermal inversion occurs when $P_2 > P_1$. Since P_0 is fixed by our atmospheric model, and continuity at the zonal boundaries allows us to fix two parameters, we consider six free parameters α_1 , α_2 , P_1 , P_2 , P_3 , and T_3 . If we rule out a thermal inversion by setting $P_2 = P_1$ (see Figure 1, Madhusudhan & Seager 2009), we can further simplify this to five parameters α_1 , α_2 , P_1 , P_3 , T_3 .

We note that although the deepest zone of this parameterisation is isothermal, this does not force our profile to be isothermal. The (P_3, T_3) point essentially acts as an anchor for our profile, and its location helps set the gradient of the profile at depth. There is no requirement for P_3 to lie within

our model atmosphere for radiative transfer purposes, and it may be located at much greater depth than can be “seen”. An alternative approach would be to set some functional form for the $P > P_3$ region. However, all options where this could provide a meaningful difference from the isothermal choice in a retrieval context would require additional parameters, and any parameter-free options would be essentially equivalent to our current choice.

We have verified that this choice of parameterisation does not bias against the types of profiles expected for brown dwarf atmospheres by ensuring that we are able to fit a range of cloudy and cloud-free grid model thermal profiles from Saumon & Marley (2008). Indeed, we use these parameterised fits to initialise our MCMC chains in Section 4. In Section 3 we establish this further by successfully retrieving thermal profiles for simulated data generated using the Saumon & Marley (2008) grid profiles.

2.1.2 Gas opacity

For simplicity, we assume uniform-with-altitude mixing ratios for absorbing gases in all the cases considered here, although our code is designed to accept layer-by-layer varying gas mixing ratios if desired. We calculate layer optical depths due to absorbing gases using high-resolution cross-sections sampled at 1cm^{-1} (as justified by Line et al. 2016, for Spex data) taken from the compendium of Freedman et al. (2008, 2014).

Here we use a new calculation of atomic line absorption due to neutral sodium and potassium using the VALD3 line list (Ryabchikova & Pakhomov 2015,¹). The line profiles are generally assumed to be Lorentzian, with no line cutoff in strength or frequency applied. The line width is calculated from the Van der Waals broadening theory for collisions with H_2 molecules using the coefficient tabulated in the VALD3 data base when available or from the full theory otherwise.

The D resonance doublets of NaI ($\sim 0.59\ \mu\text{m}$) and KI ($\sim 0.77\ \mu\text{m}$) can become extremely strong in the spectra of brown dwarfs, with line profiles detectable as far as $\sim 3000\ \text{cm}^{-1}$ from the line centre in T dwarfs (e.g. Burrows et al. 2000; Liebert et al. 2000; Marley et al. 2002; King et al. 2010). Under these circumstances, a Lorentzian line profile becomes woefully inadequate in the line wings and a detailed calculation is required. For these two doublets, we have implemented line wing profiles based on the unified line shape theory (Allard et al. 2007b,a). The tabulated profiles (Allard N., private communication) are calculated for the D1 and D2 lines of Na I and K I broadened by collisions with H_2 and He, for temperatures in the $500 - 3000\ \text{K}$ range and perturber (H_2 or He) densities up to $10^{20}\ \text{cm}^{-3}$. Two collisional geometries are considered for broadening by H_2 . The profile within $20\ \text{cm}^{-1}$ of the line centre is Lorentzian with a width calculated from the same theory.

We have computed a new water opacity database using the UCL (ExoMol) linelists, including the main isotope from 2006 and newer data for $H_2^{17}\text{O}$ and $H_2^{18}\text{O}$. We normally do not include HDO in our standard water opacities, but can be calculated separately. The partition functions have been updated to the UCL values, and the line widths combine

¹ <http://vald.astro.univie.ac.at/~vald3/php/vald.php>

UCL data for He and H₂ broadening. We combine the two widths, each with its own temperature dependence, using an assumed proportion of 0.85H₂ + 0.15He to give the actual effective broadening width for each line. We also performed the investigations described in this paper using the Partridge & Schwenke (1997) H₂O opacities and found no significant differences in our results.

The line opacity cross-sections are tabulated across our temperature-pressure regime in 0.5 dex steps for pressure, and with temperature steps ranging from 20 K to 500 K as we move from 75 K to 4000 K. We then linearly interpolate to our working pressure grid. We also include continuum opacities for H₂-H₂ and H₂-He collisionally induced absorption, using the updated cross-sections from Richard et al. (2012) and Saumon et al. (2012). We also include Rayleigh scattering due to H₂, He and CH₄ but neglect the remaining gases.

2.1.3 Clouds

We have designed our forward model with a variety of options for cloud treatments with a range of complexities, which we describe below. We discuss the clouds’ optical depths only terms of extinction. All cloud options include a free-to-vary single-scattering albedo (w_0), but we assume isotropic scattering and fix the value of the asymmetry parameter to zero.

The simplest prescription we consider is a 3-parameter model where the cloud is assumed to be grey and very optically thick with only the top of the cloud deck visible. We define the cloud deck as the pressure at which the cloud optical depth passes unity (looking down). The cloud opacity drops off in $d\tau/dP$ towards lower pressures than the cloud deck and increases to higher pressures, with $d\tau/dP \propto \exp(\Delta P/\Phi)$ where ΔP is the height above or below the optically thick level of the cloud deck, and Φ is the decay scale of the cloud in bars. This is parameterised in the retrieval by a decay scale expressed in $d \log P$. The cloud is thus characterised with three parameters: the pressure level where the optical depth passes unity, the decay scale pressure, and the single-scattering albedo.

The next level of complexity treats the cloud as a slab parameterised by total optical depth of the cloud, cloud top pressure, and cloud thickness (in $d \log P$). For the slab cloud we force $d\tau/dP \propto P$. With an extra parameter, both of these cases can be adapted to a non-grey cloud with an optical depth that follows a power-law, $\tau = \tau_0 \lambda^\alpha$, where τ_0 is the cloud optical depth at 1 μ m.

2.2 The retrieval model

The retrieval process depends on the differing effects that changes in the elements of the parameter set that is passed to the forward model have on the resultant spectrum. Figure 1 illustrates the impact of adjusting some of these parameters on the resultant spectrum. The process of optimising the forward model’s fit to the data by varying the input parameter set, or state-vector, takes place within a Bayesian framework.

Bayes’ theorem, applied to parameter estimation, provides a route to calculating the probability of a set of

parameters’ (\mathbf{x}) truth given some data (\mathbf{y}), $p(\mathbf{x}|\mathbf{y})$ (the “posterior probability”), as:

$$p(\mathbf{x}|\mathbf{y}) = \frac{\mathcal{L}(\mathbf{y}|\mathbf{x})p(\mathbf{x})}{p(\mathbf{y})} \quad (2)$$

where $\mathcal{L}(\mathbf{y}|\mathbf{x})$ is the likelihood that quantifies how well the data match the model, $p(\mathbf{x})$ is the prior probability on the parameter set, and $p(\mathbf{y})$ is the probability of the data marginalised over all parameter values, known as the marginal likelihood or Bayesian evidence. In the case of parameter estimation the Bayesian evidence simply acts as a normalisation factor. So, to map out the distribution of $p(\mathbf{x}|\mathbf{y})$ and find the best set of parameters given the data, we need only consider the two terms on top of Equation 2.

To sample the posterior distribution we use the EMCEE affine-invariant implementation of the Markov chain Monte Carlo method (Foreman-Mackey et al. 2013). The EMCEE samples the log of the posterior, and we use a log-likelihood function to assess the fit of the data to the model, as suggested by Foreman-Mackey et al. (2013):

$$\ln \mathcal{L}(\mathbf{y}|\mathbf{x}) = -\frac{1}{2} \sum_{i=1}^n \frac{(y_i - F_i(\mathbf{x}))^2}{s_i^2} - \frac{1}{2} \ln(2\pi s_i^2) \quad (3)$$

where the index i refers to the i th of n spectral flux points, y_i , with errors s_i , which are compared to the forward model fluxes F_i for the current parameter set \mathbf{x} . Following suggestions in the EMCEE documentation, we inflate our errors using a tolerance parameter to allow for unaccounted for sources of uncertainty. Our data error, s_i , is given by:

$$s_i^2 = \sigma_i^2 + 10^b \quad (4)$$

where σ_i is the measured error for the i th flux measurement, and b is our tolerance parameter, which is retrieved (Foreman-Mackey et al. 2013; Hogg et al. 2010; Tremaine et al. 2002).

We have used uniform priors for all elements in the state-vector. The strongest priors we apply are on the radius and mass of the target under consideration. Though these two items are not retrieved directly, they combine to set a limit on the gravity. The radius is determined from the scaling factor required to match the absolute flux level from the forward model, which is calculated for the top of the atmosphere (ToA flux), to the data, and the measured parallax for the target (scale factor = R^2/D^2). We restrict the radius to within a very broad range of physically plausible values of 0.5 – 2.0 R_{Jup} . The mass is restricted to between 1 M_{Jup} and 80 M_{Jup} . These limits are set by reference to the Saumon & Marley (2008), COND (Baraffe et al. 2003) and DUSTY (Chabrier et al. 2000; Baraffe et al. 2002) substellar evolutionary models. Both model grids predict $T_{\text{eff}} > 2200\text{K}$ for objects with 80 M_{Jup} at ages of 10 Gyr, and $T_{\text{eff}} < 1000\text{K}$ for objects with 1 M_{Jup} and ages of 1 Myr. This range of ages comfortably encompasses the range of ages expected for members of the Galactic disk population at a broad range of T_{eff} bracketing a plausible range for mid-L dwarfs considered here.

In the cases examined here, our temperature profile is

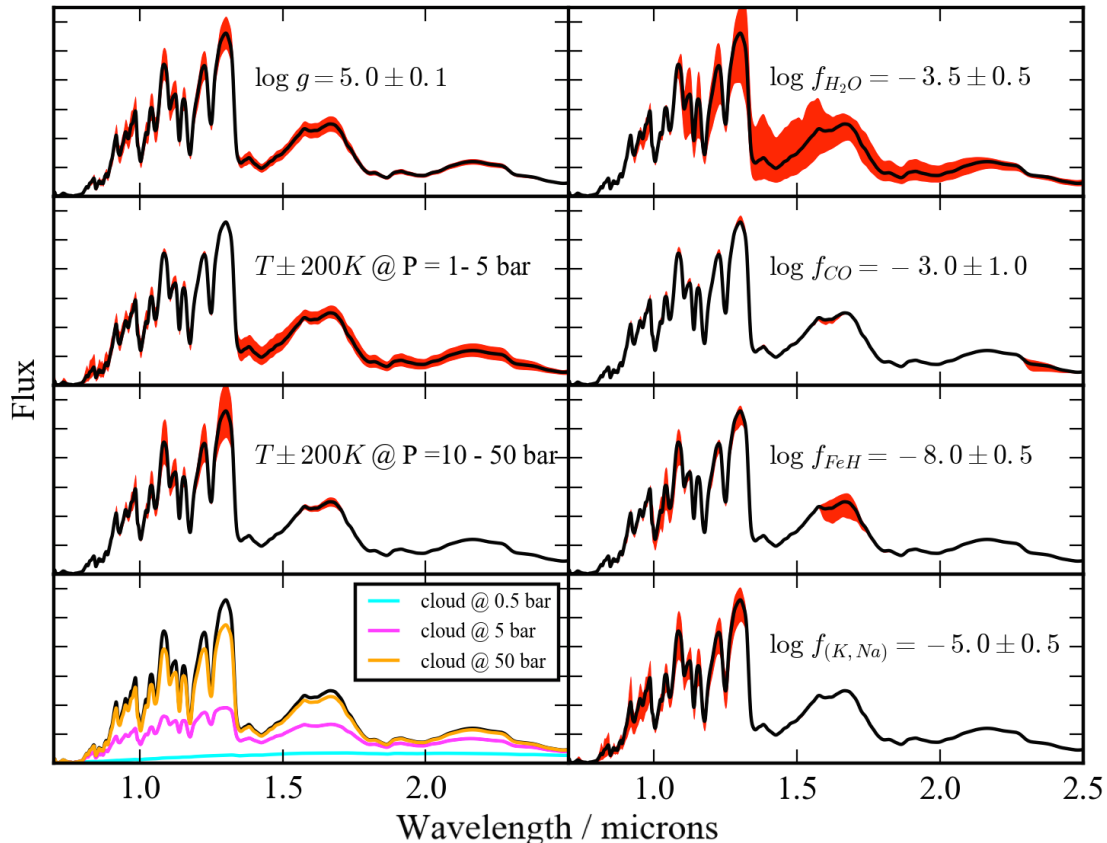


Figure 1. A demonstration of the impact of varying different elements of the forward model state-vector on the emergent spectrum. The reference case here is a cloud-free atmosphere with a thermal profiles taken from a $T_{\text{eff}} = 1700\text{K}$, $\log g = 5.0$ Saumon et al. (2012) forward-grid model. The impact on the resultant spectrum of varying the gravity and the temperature at different depths, adding a cloud and varying the gas abundances are indicated on each panel. The cloud that we add in this example is the simple grey cloud deck scenario where the depth specifies the pressure at which the $\tau_{\text{cloud}} > 1$, and we set a decay height of 1 dex.

parameterised using 5 parameters (Eq. 1). We do not constrain these directly, but they are effectively restricted by a uniform prior on the resulting layer temperatures, T_i , which we restrict to between 0 K and 4000 K. Our full set of priors are given in Table 1.

3 TEST CASES

As an initial test, we have validated our framework in the cloud-free regime by retrieving the atmospheric properties of the benchmark T dwarf G570D. For the purposes of this validation we used the same alkali opacities as employed by Line et al. (2015), and our retrieved thermal profile, gas abundances and global properties were a close match to their results. The posterior distributions for the profile and gas abundances are given in the Appendix.

To validate our tool in the L dwarf regime, we now present the results of retrievals of simple test cases based on spectra calculated using our forward model for a set of simple L dwarf-like atmospheres. These synthetic spectra

were calculated with noise added assuming $\text{SNR}=50$ at the J band flux peak, and convolved to a uniform resolution with $\text{FWHM} = 0.005\mu\text{m}$. We have used the thermal profile from a $T_{\text{eff}} = 1700\text{K}$, $\log g = 5.0$ self-consistent grid model from Saumon & Marley (2008), but have included only a simple set of 8 gases with arbitrarily selected mixing ratios, given in Table 2.

3.1 Case 1

In Case 1, we have added a simple grey cloud of optical depth unity, with its cloud top at 1 bar, and a thickness of 0.1 dex. For this case we explore our ability to retrieve the correct atmospheric parameters in both grey cloud and cloud-free scenarios. We initialised our emcee-MCMC runs with 16 walkers per parameter (19 parameters for grey cloud and 15 parameters for cloud-free cases) with values drawn from tight gaussian balls centred on values offset from the true values by small arbitrary amounts. The only exceptions were the cloud optical depth, physical thickness and albedo, which were initialised as uniform distributions between zero

Parameter	Prior
gas volume mixing ratio	uniform, $\log f_{gas} \geq -12.0$, $\sum_{gas} f_{gas} \leq 1.0$
thermal profile: $\alpha_1, \alpha_2, P1, P3, T3$	uniform, constrained by $0.0 \text{ K} < T_i < 5000.0 \text{ K}$
scale factor, R^2/D^2	uniform, constrained by $0.5R_{Jup} \leq R \leq 2.0R_{Jup}$
gravity, $\log g$	uniform, constrained by $1M_{Jup} \leq gR^2/G \leq 80M_{Jup}$
cloud top ¹	uniform, $-4 \leq \log P_{CT} \leq +2.3$
cloud decay scale ²	uniform, $0 < \log \Delta P_{decay} < 7$
cloud thickness ³	uniform, constrained by $\log P_{CT} \leq \log(P_{CT} + \Delta P) \leq 2.3$
cloud total optical depth (extinction) ³	uniform, $\tau_{cloud} \geq 0.0$
single scattering albedo, w_0	uniform, $0. \geq w_0 \leq 1.0$
wavelength shift	uniform, $-0.01 < \Delta\lambda < 0.01\mu\text{m}$
tolerance factor	uniform, $\log(0.01 \times \min(\sigma_i^2)) \leq b \leq \log(100 \times \max(\sigma_i^2))$

Table 1. Notes: 1) for an optically thick cloud deck this is the pressure where $\tau_{cloud} = 1$, for a slab cloud this is the top level of the slab; 2) decay height for cloud deck above the $\tau_{cloud} = 1.0$ level; 3) thickness and τ_{cloud} only retrieved for slab cloud.

Parameter	$\log f_{H_2O}$	$\log f_{CO}$	$\log f_{TiO}$	$\log f_{VO}$	$\log f_{CrH}$	$\log f_{FeH}$	$\log f_{Na+K}$	$\log g$
Input	-3.5	-3.0	-7.5	-8.5	-8.0	-8.0	-5.0	5.0

Table 2. Input values for gas volume mixing ratios and gravity used for our test cases.

and one. After 10000 steps of burn-in the sampler was reset and run for 30000 steps. We draw our results from the last 2000 steps, comprising $32000 \times N_{dim}$ independent samples.

Figures 2 and 3 show our retrieved thermal profiles for case 1 under cloudy and cloud-free retrieval assumptions. Our retrieved profiles match the input profile closely under the cloudy assumption, and the retrieved gas fractions match the input values (Figure 4). The retrieved cloud optical depth matches the input value well, $\tau_{cloud} = 1.01^{+0.24}_{-0.18}$. Our median retrieved cloud location is a good match for the input. Although the cloud physical thickness is not well constrained, the pressure level where $\tau_{cloud} = 1.0$ is well constrained and lies within 0.3 dex of the input cloud base.

The retrieved profile for Case 1 under the cloud-free assumption (Figure 3) does not follow the input profile so closely, showing a more isothermal profile that is warmer at lower pressures than the approximate location of the cloud in the input model, and cooler at higher pressures. This is similar to the profile morphology suggested by Tremblin et al. (2015, 2016) for cloud-free L dwarfs. The retrieved gas abundances and gravity are similar to those retrieved under the cloudy assumption, and the input values, with the exception of the alkali abundance which is significantly over-estimated in this case. To select a preferred retrieval model for this test case we apply the Bayesian Information Criterion (BIC). Kass & Raftery (1995) provide the following intervals for selecting between two models under the BIC:

- $0 < \Delta BIC < 2$: no preference worth mentioning;
- $2 < \Delta BIC < 6$: positive;
- $6 < \Delta BIC < 10$: strong;
- $10 < \Delta BIC$: very strong.

In these two cases, we find that our cloudy model is strongly preferred with a $\Delta BIC = 11$.

3.2 Case 2

In Case 2 we adopt an optically thick grey cloud deck, whose optical depth passes unity at $\log P(\text{bars}) = 0.5$, and which has a scale height of 1 dex. The rest of the atmospheric parameters are as for Case 1. Figure 5 shows the retrieved

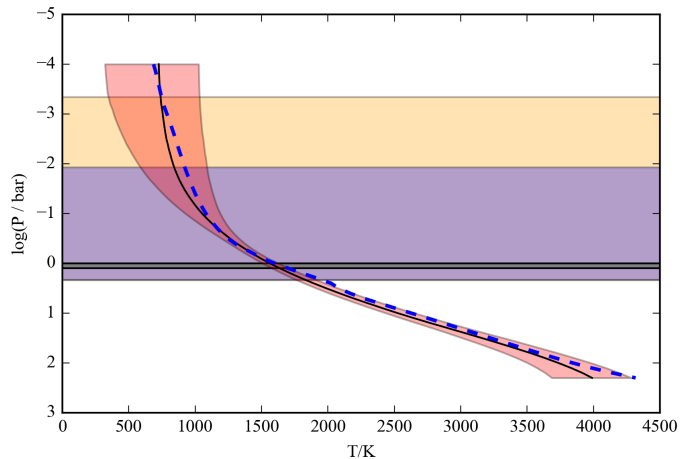


Figure 2. Comparison of our retrieved thermal profile and cloud location with the input for our test case 1. Our median retrieved profile is indicated by a solid black line, and its 65% confidence interval is denoted by red shading. The input profile is shown with a blue dashed line, and the input cloud location is shaded grey. The median retrieved cloud is shaded purple, and its 68% confidence range is shaded yellow.

profile and cloud location for the retrieval of this test case under the assumption of the optically thick cloud deck. As with the thin slab, the retrieved pressure at which the cloud optical depth reaches unity is located accurately. The vertical extent of the optically thin region of the cloud are not well constrained by the retrieval. The retrieved gas abundances in this case match the input values well, as does the retrieved profile.

Under the cloud-free assumption, the vast majority of samples from the posterior distribution lie within a very narrow profile region (Figure 6), although inspection of a set of random draws from the posterior reveals several outlying clusters of profiles. In a more extreme version of the behaviour seen for the thin slab cloud in Case 1, the optically thick region of cloud is matched with a nearly isothermal

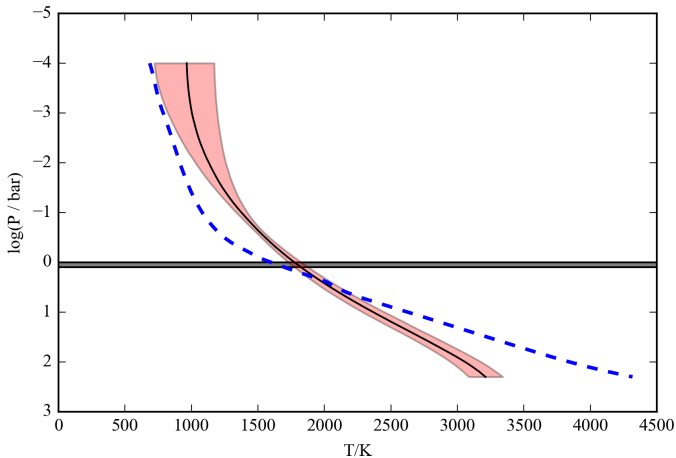


Figure 3. Comparison of our retrieved thermal profile with the input for our test case 1, retrieved under a cloud-free assumption. Our median retrieved profile is indicated by a solid black line, and its 65% confidence interval is denoted by red shading. The input profile is shown with a blue dashed line, and the input cloud location is shaded grey.

profile, deviating strongly from the input profile. The profile deviates to near isothermal at the pressure that the cloud optical depth passes unity in the input spectrum model. This is driven by the need to truncate the flux in the bright opacity windows that are otherwise obscured by the cloud opacity. Like an opaque cloud, the isothermal profile similarly radiates as a single blackbody at the turnover temperature. In this case the retrieved gas abundances are not as accurate as for the cloudy retrieval, and the retrieved gravity is well removed from the input value. The cloud-free case is unable to match the shape of the synthetic spectrum effectively, in particular it struggles with the bright J band regions where it consistently overestimates the flux. Selecting between these cases using the BIC very strongly prefers the cloudy retrieval, with a $\Delta BIC = 62$.

3.3 Summary of tests

In both our test cases we were able to distinguish the cloudy and cloud-free scenarios using the BIC, although in Case 1 the power of this selection was considerably weaker than in Case 2, reflecting the lower impact of the $\tau = 1$ cloud compared to the extremely optically thick cloud deck used in Case 2. The tests reveal that we cannot expect to retrieve the vertical extent of clouds with any degree of precision. However, we are able to correctly retrieve the depth at which a cloud becomes optically thick. In the thin slab case, our ability to retrieve correct gas abundances is only weakly dependent on the cloud properties. In the cloud deck case the gas abundances differ strongly between the cloudy and cloud-free cases, and the cloudy retrieval successfully retrieved all parameters accurately. In both cases, the retrieved thermal profile depends strongly on the presence or otherwise of clouds in the retrieval model, with a shallow temperature gradient able to broadly mimic the influence of the cloud. We also note that the parameterised profile is

able to accurately fit and retrieve grid model thermal profiles in L dwarf regime, and the profile retrieved by Line et al. (2015) for G570D.

4 FIRST APPLICATIONS TO FIELD L DWARFS

As our first application of this tool to the warm, cloudy, brown dwarf regime we attempt to retrieve the atmospheric properties of the L4 spectral template 2MASS J05002100+0330501 (2M0500+0330; Reid et al. 2008) and the well-studied L4 dwarf 2MASSW J2224438-015852 (2MASS2224-0158; Kirkpatrick et al. 2000). We have selected these targets due to the availability excellent quality SNR ~ 100 , $0.7 - 2.5 \mu\text{m}$ low-resolution Spex (Rayner et al. 2003) spectroscopy, and their mid-L spectral types. The observed properties of our targets found in the literature are summarised in Table 3.

4.1 2M0500+0330

2M0500+0330 is an L4 spectral template (Reid et al. 2008) at a distance of 13.54 ± 0.35 pc (Faherty et al. 2009). Bardalez Gagliuffi et al. (2014) found no evidence for unresolved binarity via spectral deconvolution, and Gagné et al. (2015) find no evidence of youth or moving group membership. Filippazzo et al. (2015) estimated $T_{\text{eff}} = 1793 \pm 72$ and $\log g = 5.2 \pm 0.19$ based on its bolometric luminosity and with reference to evolutionary models assuming an age range of $0.5 - 10$ Gyr.

4.2 2M2224-0158

This L4.5 dwarf lies a distance of 11.35 ± 0.14 pc (Faherty et al. 2012). Filippazzo et al. (2015) have estimated $T_{\text{eff}} = 1646 \pm 0.71\text{K}$ and $\log g = 5.18 \pm 0.22$ for this target using the same method and assumptions as for 2M0500+0330. It is somewhat redder than is typical for its spectral type, with $J - K = 2.1 \pm 0.03$. Stephens et al. (2009) found that fitting grid models to the near-infrared spectrum of this object suggested a T_{eff} some 250 K cooler than implied by its luminosity. Cushing et al. (2006) presented a tentative detection of a silicate scattering feature in *Spitzer* IRS data for this target. This makes it an ideal test case to investigate the influence of silicate clouds on the emergent near-infrared spectrum. Sorahana et al. (2014) used AKARI $3 - 5\mu\text{m}$ spectroscopy to argue that chromospheric heating has resulted in an isothermal upper atmosphere ($\log P < -0.5$) with $T = 1445\text{K}$ for 2M2224-0158. The notion of chromospheric heating is also consistent with the observation of H α emission in this target (Kirkpatrick et al. 2000).

4.3 Retrieval setup

The set of gases retrieved were H $_2$ O, CO, TiO, VO, CaH, CrH, FeH, Na and K. As in Line et al. (2015), the alkalis, were tied together as a single element in the state-vector assuming a Solar ratio taken from Asplund et al. (2009). We carried out retrievals under a variety of cloud assumptions that built up incrementally in complexity, and we assessed performed model selection based on the BIC. Each retrieval

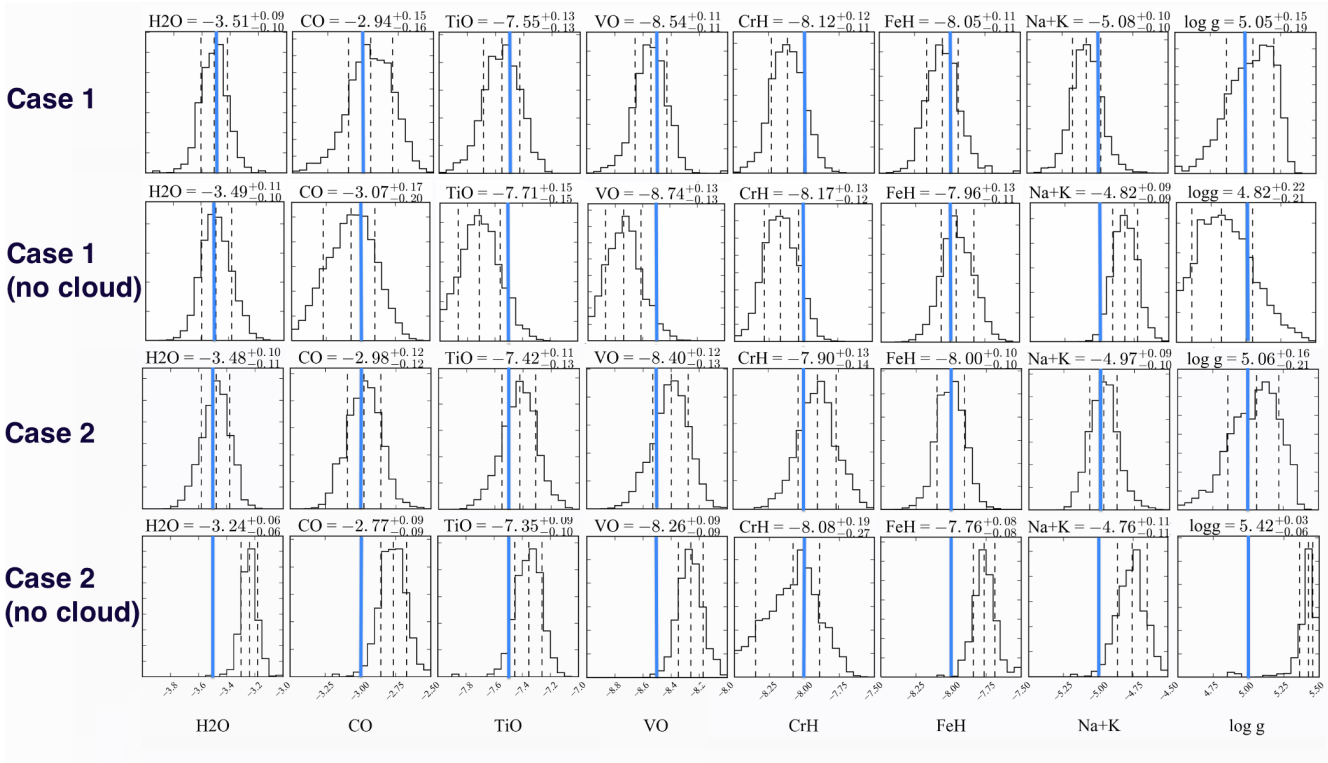


Figure 4. Marginalised posterior distributions for the retrieved gas abundances in our two test cases. The input values are shown as blue lines, the median retrieved values and 1σ intervals are shown as dashed lines on each histogram.

Name	2MASS0500+0330	2MASS2224-0158
α_{J2000}	05:00:21.00	22:24:43.8 ¹
δ_{J2000}	+03:30:50.18	-01:58:52.14 ¹
J_{2MASS}	13.67 ± 0.02^1	14.07 ± 0.03^1
H_{2MASS}	12.68 ± 0.02^1	12.82 ± 0.03^1
K_{2MASS}	12.06 ± 0.02^1	12.02 ± 0.02^1
WISE-W1	11.51 ± 0.02	11.36 ± 0.02
WISE-W2	11.25 ± 0.02	11.12 ± 0.02
WISE-W3	10.96 ± 0.11	10.65 ± 0.09
Spectral type	L4 (opt) ² / L4 (NIR) ³	L3.5 (opt) / L4.5(NIR) ⁴
Parallax	73.85 ± 1.98^5	88.10 ± 1.10^6

Table 3. The observed properties of our retrieval targets. References: ¹Skrutskie et al. (2006); ²Reid et al. (2008); ³Bardalez Gagliuffi et al. (2014); ⁴Stephens et al. (2009); ⁵Dieterich et al. (2014); ⁶Faherty et al. (2009)

was initialised with 16 walkers per parameter in a tight gaussian ball centred around the approximate Solar composition equilibrium chemistry values (see Section 4.7) for gas volume mixing ratios, wavelength shift between the data and the model, $\Delta\lambda = 0$, and for a scale factor consistent with $R \approx 1.0R_{jup}$, but with flat distributions for gravity in the range $\log g = 4.5 - 5.5$, and covering the entire prior range for cloud properties and the tolerance parameter.

We experimented with a variety of initialisations for the parameterised thermal profile. These were all based on fitted values of the α_1 , α_2 , P_1 , P_3 , T_3 parameters to grid model profiles from Saumon & Marley (2008). Our final initialisation was a gaussian distribution with standard deviations of $\pm 500\text{K}$ about T_3 for the fit to a $T_{\text{eff}} = 1700\text{K}$, $\log g = 5.0$ model, $\pm 0.2\text{dex}$ distributions in $\log P$ for P_1 and P_2 , and ± 0.1 and ± 0.05 in α_1 and α_2 about the same fitted values. We also experimented with using grid model profiles in the

range $T_{\text{eff}} = 1500 - 1700\text{K}$, and with wider and narrower gaussian spreads, and with using flat distributions of values. We found the choice amongst these had little impact on the final results.

4.4 Model selection

The BICs for our retrievals using different cloud models are shown in Table 4. The hierarchy of preferred models is different for our two targets, but in both cases the optically thick, power-law cloud deck is strongly preferred over all other models.

4.5 The retrieved spectra

In Figures 7 and 8 we compare the forward model spectra for our retrieved parameters to the observed spectra for our tar-

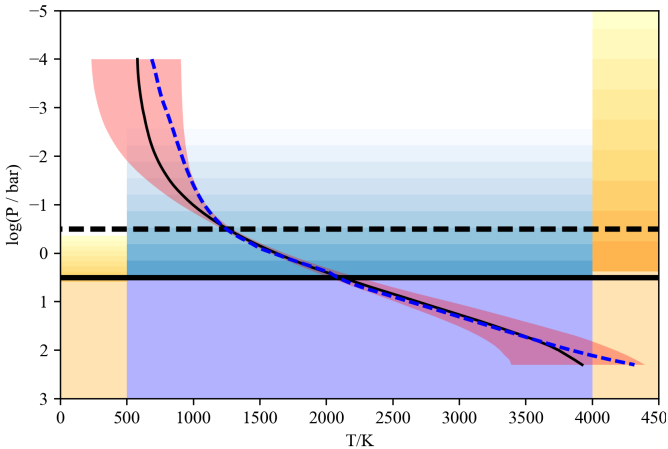


Figure 5. Comparison of our retrieved thermal profile and cloud location with the input for our test case 2. Our median retrieved profile is indicated by a solid black line, and its 65% confidence interval is denoted by red shading. The input profile is shown with a blue dashed line. The cloud deck pressure is indicated by a solid horizontal line, and its scale height is indicated with a horizontal dashed line. The median retrieved cloud is shaded blue at higher pressure than that of the cloud deck, and its scale height is indicated by graduated shading. The 68% confidence range of the cloud is similarly indicated in yellow on either side of the plot.

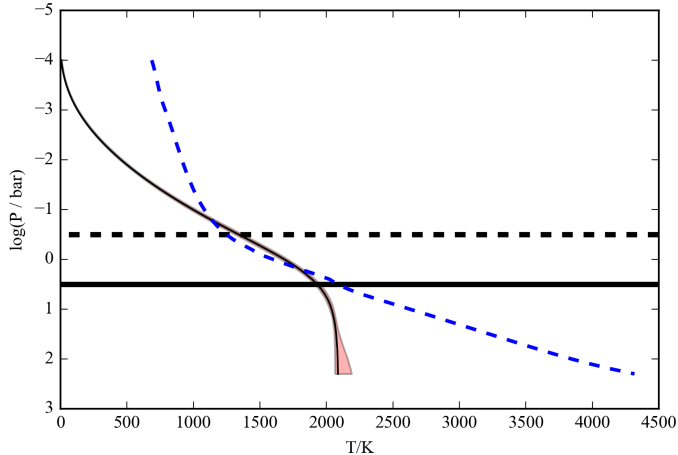


Figure 6. Comparison of our retrieved thermal profile with the input for our test case 2, retrieved under a cloud-free assumption, following notation of Figure 5. We have included the location of the input cloud deck as a horizontal solid black line, and the scale height over which its opacity drops off is indicated as a dashed black line.

gets. The match is extremely good, particularly compared to the cloudy ($f_{sed} = 2$) Marley & Saumon grid models for the gravity and T_{eff} estimated by Filippazzo et al. (2015). It is worth noting that while the two grid model spectra effectively bracket our retrieval spectrum for 2M2224, they both have overall slopes that are too blue between the *J* and *K* band regions ($1.2 - 2.5 \mu\text{m}$) compared to the observed spec-

Cloud case	N_{param}	ΔBIC	
		2M0500	2M2224
Cloud free	17	+11	+50
Grey cloud deck	20	+11	+40
Power-law cloud deck	21	0	0
Slab grey cloud	21	+20	+48
Slab power-law cloud	22	+13	+36
Two clouds: slab + deeper deck	26	+22	+26

Table 4. ΔBIC values for our field dwarf retrievals. Our preferred power-law cloud deck model is taken as the reference point.

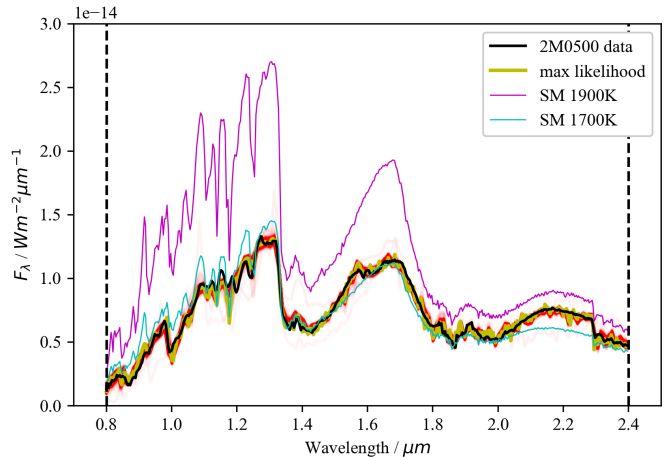


Figure 7. The 2M0500+0330 forward model output spectra for 5000 random draws from our final 2000 iterations of the EMCEE sampler, comprising 32000 independent samples, shown in red. The maximum likelihood case is plotted in yellow, and the Spex spectrum for our target is plotted in black (Bardalez Gagliuffi et al. 2014). Also plotted are the Saumon & Marley grid model $f_{sed} = 2$ predictions for spectra for $\log g = 5.0$ and $T_{\text{eff}} = 1700\text{K}$ and 1900K , which bracket the T_{eff} estimated by Filippazzo et al. (2015).

trum. In Figures 9 and 10, we extend our maximum likelihood spectrum to longer wavelengths to allow comparison with our targets' WISE photometry Wright et al. (2010). Our spectra match the WISE-W2 channel flux near $4.5 \mu\text{m}$ well, but in both cases our flux is somewhat overestimated at the shorter wavelength WISE-W1 point. This is not necessarily surprising since the WISE-W1 band was designed to be sensitive to the depth of the $\text{CH}_4 \nu_3$ fundamental band at $3.3 \mu\text{m}$, and we have not included CH_4 in our forward model for this case due to its weak impact in the near-infrared at these temperatures. Although methane is typically associated with objects in the T dwarf regime, it has been detected L dwarfs as early in type as L5 due to its much stronger feature at $3.3 \mu\text{m}$ (e.g. Noll et al. 2000; Stephens et al. 2009).

4.6 The retrieved profiles

Figure 11 and 12 shows our retrieved thermal profiles and the location of the cloud deck in our preferred retrievals. Our profiles differs significantly from the corresponding forward grid model, being significantly cooler in the region between 1 and 10 bar and by being nearly isothermal at pressures

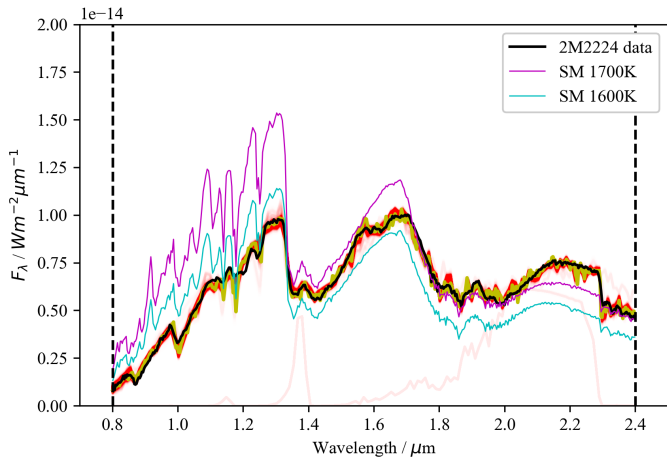


Figure 8. The 2M2224+0158 forward model output spectra for 5000 random draws from our final 2000 iterations of the EMCEE sampler, comprising 32000 independent samples, shown in red. The maximum likelihood case is plotted in yellow, and the Spex spectrum for our target is plotted in black (Burgasser et al. 2010). Also plotted are the Saumon & Marley grid model $f_{sed} = 2$ predictions for spectra for $\log g = 5.0$ and $T_{\text{eff}} = 1600\text{K}$ and 1700K , which bracket the T_{eff} estimated by Filippazzo et al. (2015).

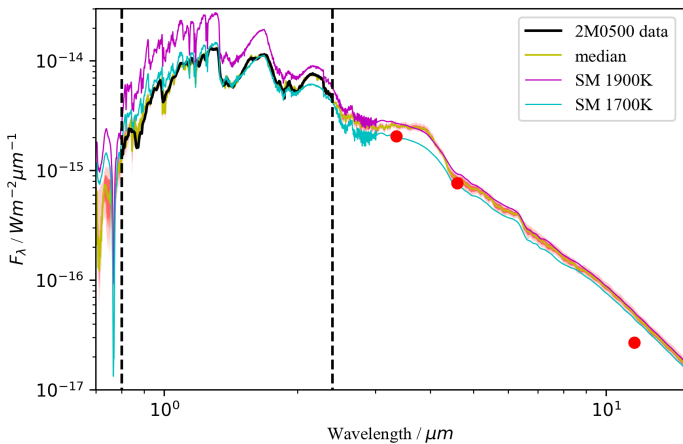


Figure 9. The extension of our median spectrum for 2M0500+0330 to longer wavelengths compared to WISE photometric fluxes (red filled circles) and the grid models shown in Figure 7. The 1σ and 2σ interval for the spectrum is indicated by red and pink shading. The uncertainties on the WISE points are comparable to the symbol size.

lower than 0.1 bar. The first of these likely goes some way to explaining the redder slopes in our retrieval spectra compared to the grid models, and the difficulty that the grid models have in correctly predicting the colours of L dwarfs as a function of spectral type. Although our profile shape may be somewhat surprising in the context of model grid predictions, we note that its clearly driven by the data, and is well removed from the initialisation values that were based on these same grid models. The deep profiles are also close to parallel with the grid model predictions, and so do not

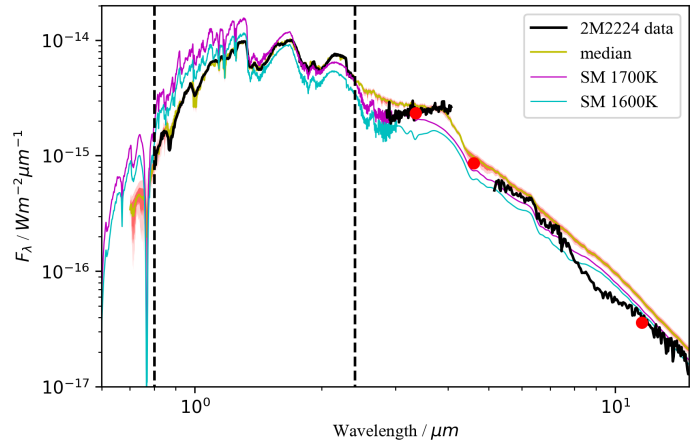


Figure 10. The extension of our median spectrum for 2M2224-0158 to longer wavelengths compared to WISE photometric fluxes (red filled circles) and the grid models shown in Figure 8. The 1σ and 2σ interval for the spectrum is indicated by red and pink shading. The uncertainties on the WISE points are comparable to the symbol size. Also plotted are the longer wavelength spectra for this target from Cushing et al. (2006).

appear to be unphysical. The upper atmosphere temperature is also consistent with the results of Sorahana et al. (2014) for 2M2224-0158, and suggests that a heat source for the radiative equilibrium region of the atmosphere may be important in one or both of these targets.

It is important to note that the deep thermal profiles (at pressures higher than 10 bar) are really the extrapolation of the profile gradient at lower pressures, since there is little contribution to the observed flux from beneath the cloud deck. This is reflected in the widening confidence interval with increasing pressure.

At first glance, there is some similarity to the cloud-free retrieval of Test Case 1 that might lead one to attribute our profile differences to an omitted cloud: at lower pressure than the omitted cloud in Test Case 1, the retrieved profile was warmer than the input profile, while beneath the omitted cloud it was cooler. However, there are two points that argue against this explanation for the disagreement between our retrieved profiles with the grid models'. Firstly, we have performed a retrieval on these targets using a two cloud model that allows for a thin slab cloud lying above the main cloud deck (which was rejected during model selection). This scenario did not retrieve a significantly different profile, and the additional cloud was placed within the deep cloud deck. Secondly, the deep cloud deck in the preferred model also incorporates an optically thin extension to lower pressures, the extent of which is not strongly constrained. We found in the test cases that the vertical extent of the cloud has little effect on the profile or other retrieved properties, although the $\tau_{cl} \geq 1$ level is important. So, whilst it remains a possibility that missing low-pressure cloud opacity may impact our retrieved profile, it would require sub-structure in the clouds' vertical distribution to be important in a way that so far appears unlikely.

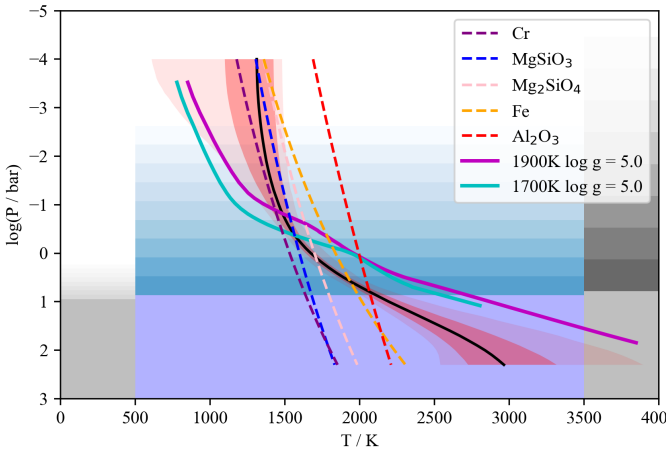


Figure 11. Our retrieved thermal profile and cloud location for our preferred optically thick cloud deck model for 2M0500-0330. The median case thermal profile is shown as a solid black line, with the 1σ and 2σ intervals are indicated with red and pink shading. The central shaded panel indicates the median cloud location, whilst the edge panels show the $\pm 1\sigma$ cloud profiles from the retrieval. The cloud top, where the cloud optical depth passes unity, is indicated by extent of the solid shading, whilst the scale height of the cloud above the top is shown with graded shading. Also plotted are condensation curves for likely cloud species, and the forward model grid (T,P) profiles for $f_{sed} = 2$, $\log g = 5.0$, for $T_{\text{eff}} = 1700\text{K}$ and 1900K , which bracket the T_{eff} estimated by Filippazzo et al. (2015), and that inferred from this retrieval model.

4.7 Composition, T_{eff} and gravity

Figures 13 and 14 shows the posterior probability distributions for our retrieved gas abundances, along with gravity and the derived quantities M , R and T_{eff} . The radius and mass are calculated from the retrieved R^2/D^2 scaling factor, trigonometric parallax and gravity. We note that despite our prior requirement that $M < 80M_{Jup}$, our distributions in Figures 13 and 14 spread beyond this value. This is because our prior is applied during the retrieval assuming zero error on the distance to the target, whereas the subsequent evaluation of mass and radius posteriors incorporates the uncertainty in the trigonometric parallaxes. The T_{eff} is calculated using the derived radius and integrating the flux in our forward model output spectra between 0.6 and $20\mu\text{m}$. Our derived T_{eff} and gravities are in good agreement with those found by Filippazzo et al. (2015). For 2M0500+0330 we find $T_{\text{eff}} = 1796^{+23}_{-25}\text{K}$ and $\log g = 5.21^{+0.05}_{-0.08}$ (c.f. $T_{\text{eff}} = 1793 \pm 72\text{K}$ and $\log g = 5.19 \pm 0.19$). For 2M2224-0158 our retrieved $T_{\text{eff}} = 1723^{+18}_{-19}\text{K}$ and $\log g = 5.31^{+0.04}_{-0.08}$ are marginally higher, but consistent with the Filippazzo values ($T_{\text{eff}} = 1646 \pm 71\text{K}$; $\log g = 5.18 \pm 0.22$), which likely reflects the overestimated flux our model displays in the WISE-W1 region. Our retrieved gravities, masses, radii and T_{eff} are also all consistent with evolutionary model predictions for a Solar metallicity brown dwarf with an age in the 2 – 10 Gyr range (Saumon & Marley 2008; Baraffe et al. 2003; Chabrier et al. 2000; Baraffe et al. 2002).

To place our retrieved gas abundances in context we compare them to modelled chemical equilibrium abundances

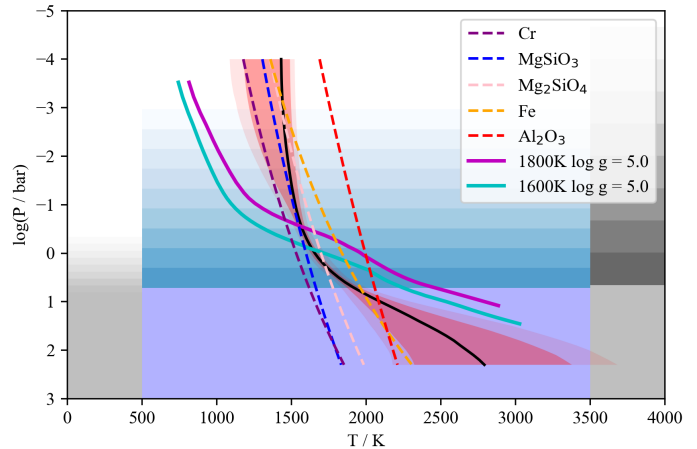


Figure 12. Our retrieved thermal profile and cloud location for our preferred optically thick cloud deck model for 2M2224-0158. The median case thermal profile is shown as a solid black line, with the 1σ and 2σ intervals are indicated with red and pink shading. The central shaded panel indicates the median cloud location, whilst the edge panels show the 1σ boundary cases. The cloud top, where the cloud optical depth passes unity, is indicated by extent of the solid shading, whilst the scale height of the cloud above the top is indicated with graded shading. Also plotted are condensation curves for likely cloud species, and the forward model grid (T,P) profiles for $f_{sed} = 2$, $\log g = 5.0$, for $T_{\text{eff}} = 1600\text{K}$ and 1800K , which bracket the T_{eff} estimated by Filippazzo et al. (2015), and that inferred from this retrieval model.

in Figures 15 and 16. The chemical equilibrium grids were calculated using the NASA Gibbs minimization CEA code (see McBride & Gordon 1994), based upon prior thermochemical models (Fegley & Lodders 1994, 1996; Lodders 1999, 2002, 2010; Lodders & Fegley 2002, 2006; Visscher et al. 2006, 2010; Visscher 2012; Moses et al. 2012, 2013) and recently utilized to explore gas and condensate chemistry over a range of substellar atmospheric conditions (Morley et al. 2012, 2013; Skemer et al. 2016; Kataria et al. 2016; Wakeford et al. 2016). The chemical grids are used to determine the equilibrium abundances of atmospheric species over a wide range of atmospheric pressures (from 1 microbar to 300 bar) and temperatures (300 to 4000 K), and in this case we assume Solar metallicity and C/O ratio.

The predicted abundance of several species varies by up to four order of magnitude across our atmospheric profile. This is in sharp contrast to the simple gas profiles seen in the T dwarf regime (e.g. Line et al. 2015). This represents a significant challenge for our retrieval, which for expediency assumes a uniform-with-pressure volume mixing ratio for all gases. Investigating alternative methods for modelling the variation of abundance with altitude for gases in the L dwarf regime will be investigated in a future work.

Although some of our retrieved abundances are comparable to the predicted abundance in the region of the atmosphere where most flux originates (1 – 10 bar), there is a striking disagreement between our retrieved CO abundance and the predicted value in both cases, with our retrieval finding a factor ~ 10 higher CO abundance than predicted in the

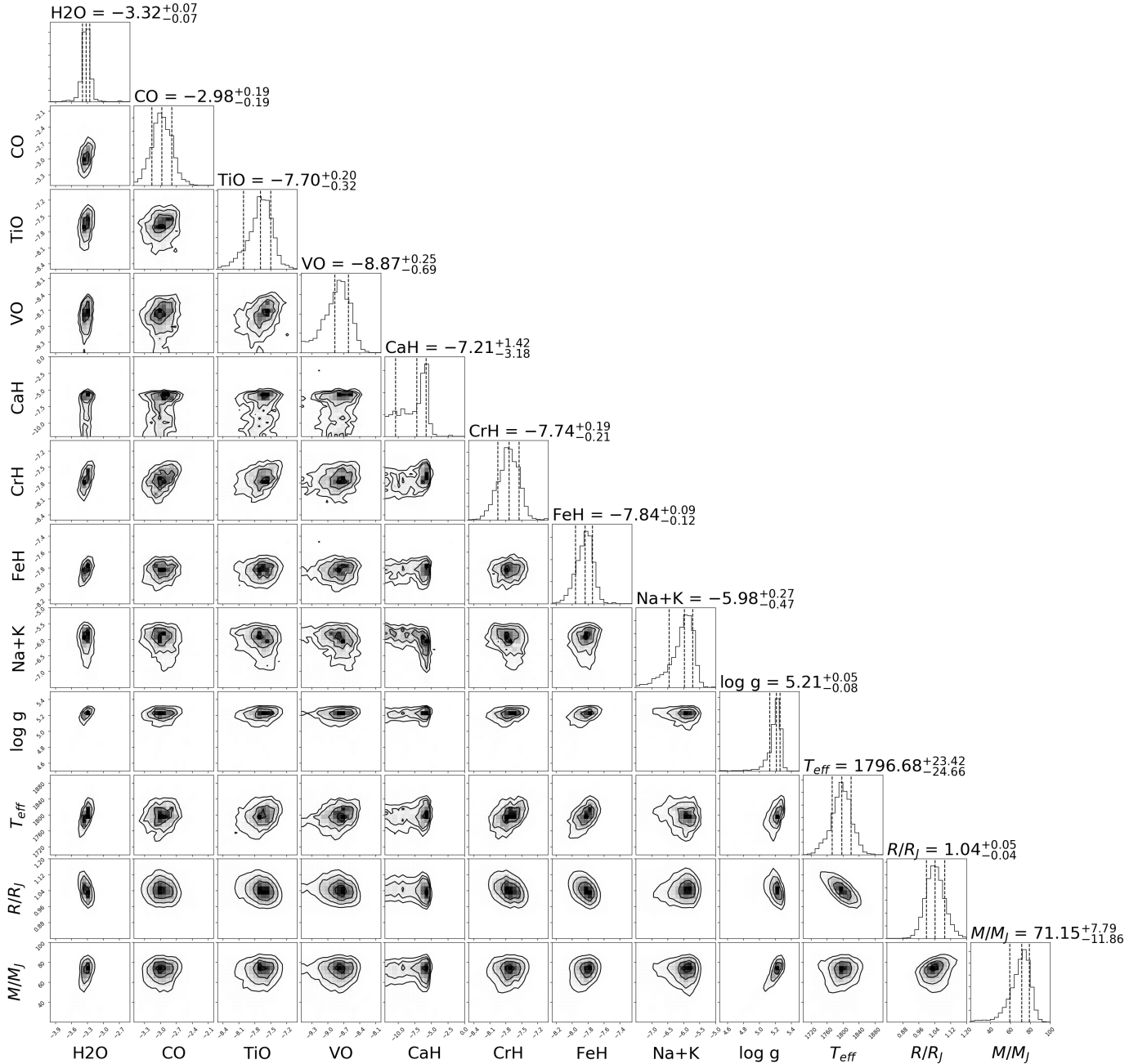


Figure 13. Posterior probability distributions for some of our retrieved parameters in the selected cloud deck case for 2M0500+0330. Also shown are M , R and T_{eff} which are not directly retrieved, but are inferred from our retrieved parameters R^2/D^2 , $\log g$ and predicted spectra.

case of 2M2224-0158. In addition, for 2M0500+0330, our retrieved alkali abundance is 50% smaller than predicted, and our CrH abundances in both cases appear overestimated. Without external constraints on the “true” composition of our targets, it is difficult to interpret our retrieved compositions in any robust way.

It is important to note that neither the BT Settl models (Allard et al. 2011) nor the Saumon & Marley (2008) models are able to accurately reproduce both the near-infrared

spectral shape and the depth of the CO band head. Indeed, both sets of models significantly under-predict the depth of this feature at Solar metallicity. However, given our retrieved profile’s deviation from the grid model predictions, we first investigate if a steeper thermal profile in the upper atmosphere could improve the fit to the CO band with a lower abundance.

We have performed retrievals for 2M2224-0158 in which we fix the profile as one of the grid profiles for the range

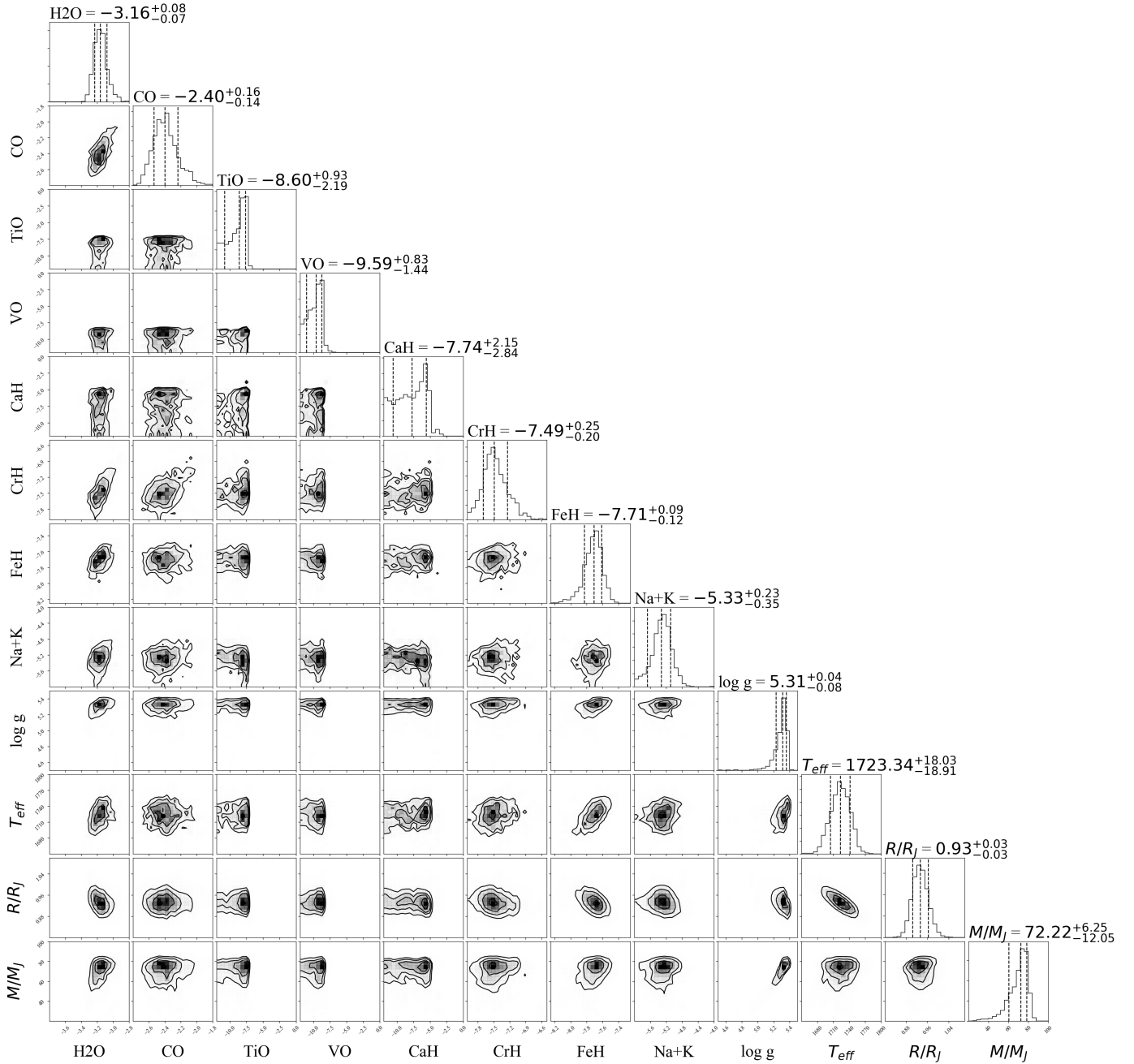


Figure 14. Posterior probability distributions for some of our retrieved parameters in the selected cloud deck case for 2M2224-0158. Also shown are M , R and T_{eff} which are not directly retrieved, but are inferred from our retrieved parameters R^2/D^2 , $\log g$ and predicted spectra.

$T_{\text{eff}} = 1500 - 1700\text{K}$. All but the $T_{\text{eff}} = 1500\text{K}$ case resulted in similarly high CO abundances, but with poor fits to the data. The $T_{\text{eff}} = 1500\text{K}$ case returned a CO abundance close to the predicted value and a with a good fit to the depth of the CO band. However, elsewhere it provided a significantly poorer fit to the data than our best retrieval, with substantial deviations in the J band peak, the blue shoulder of the H band, and in the shape of the K band bump.

We have also tested for a correlation between the slope of the thermal profile at pressures smaller than 0.1 bar and the CO mixing ratio in the final 10000 iterations of our EMCEE chain (total 3,360,000 samples). We find that although there is a set of cases with thermal profiles with a steeper low-pressure gradient and a CO abundance near the grid-predicted value, these cases have much lower likelihood, apparently driven by their poor fit to the CO bandhead. We

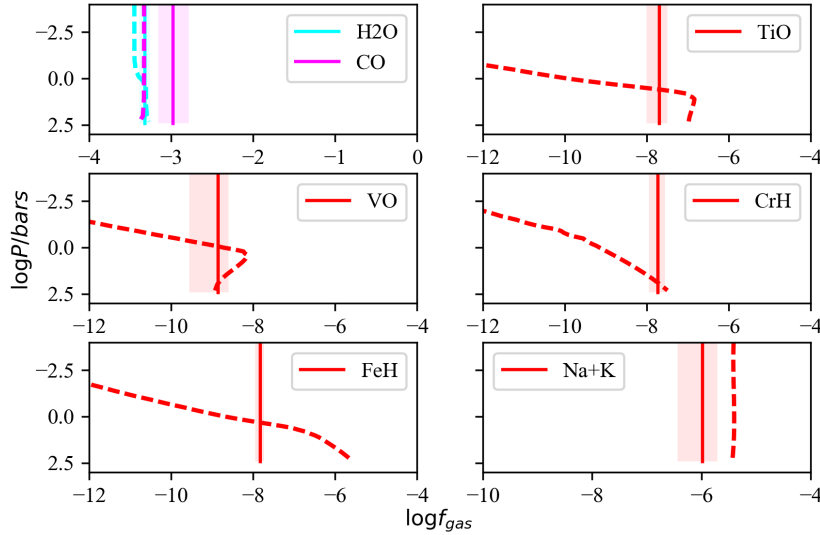


Figure 15. Retrieved abundances for 2M0500+0330 and predicted thermochemical equilibrium abundances for our retrieved profile.

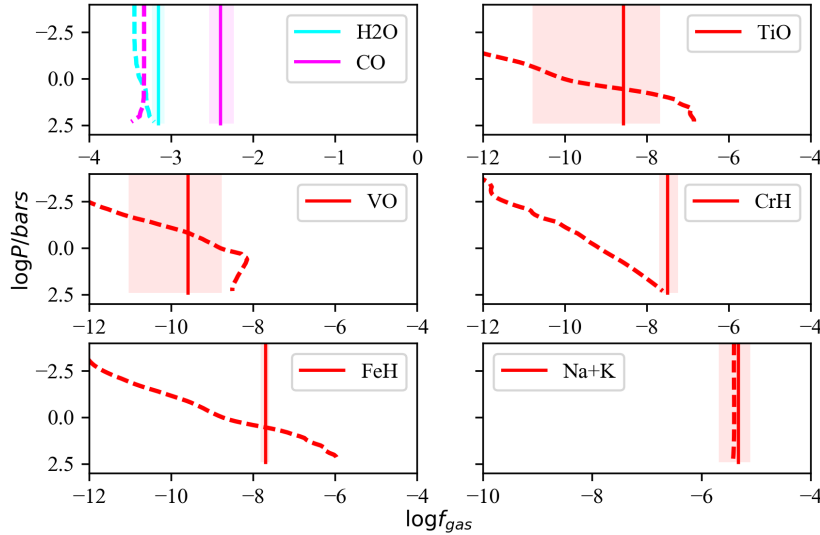


Figure 16. Retrieved abundances for 2M2224-0158 and predicted thermochemical equilibrium abundances for our retrieved profile.

thus conclude that the thermal profile (and specifically its shallow gradient at pressures smaller than 0.1 bar) is unlikely to be the cause of our apparently anomalous CO abundance. We also note that our choice of cloud model does not strongly influence our retrieved CO fraction, although the cloud-free model requires moderately higher CO abundance. The retrieved CO fraction is also not correlated with cloud thickness or cloud scale height.

The remaining relatively-simple origin of both our anomalous CO abundance and the poor performance of the grid models in this area is an issue with the CO cross-

sections used by both the grid models and our retrieval model.

4.8 Cloud properties

Our retrieval result allows us to constrain the properties of the cloud via two routes. Firstly, we have the pressure at which the cloud’s optical depth passes unity, i.e. the cloud top. Secondly, we have the retrieved exponent of the power-law that we have used for our simplified cloud opacity, which tells us roughly how “non-grey” the cloud is. We have not strongly constrained the single scattering albedo (although

higher single scattering albedo appears to be marginally preferred) so this does not help constrain the particle properties in this case.

Inspecting Figure 12 suggest that both iron and corundum (Al_2O_3) condensates would be stable on our profile at the pressure of the cloud deck in 2M2224-0158, whilst Figure 11 suggests that only corundum would be stable at the 2M0500+0330 cloud deck. The silicates, enstatite and forsterite, on the other hand would not be stable at the cloud deck for either object. Our first conclusion, then, is that the dominant source of cloud opacity shaping the near-infrared spectra of these mid-L dwarfs is not silicate, but rather corundum and/or iron condensates.

This is a surprising result, since silicate condensates are widely regarded as the dominant source of cloud opacity in L dwarf spectra. This is especially relevant for 2M2224-0158, for which a feature tentatively attributed to small silicate particles has been observed in the $8\mu\text{m}$ region (Cushing et al. 2006). This feature was identified by a broad dip in the observed spectrum relative to the $T_{\text{eff}} = 1700\text{K}$, $\log g = 5.0$ grid model (Figure 10). As can be seen, this model’s spectrum does not match the shape of the observed spectrum for most of the SED, so it is difficult place the poor match at $8\mu\text{m}$ in context. None-the-less, our results do not exclude the presence of silicate clouds. Our thermal profiles cross the stability curve for forsterite, so it is entirely possible that such clouds exist at lower pressures than the principal cloud deck, and are responsible for the feature seen at $8\mu\text{m}$. As we saw in Section 3, our retrieval is not sensitive to the vertical distribution of cloud above the level at which it becomes optically thick. So, while silicates may contribute to the cloud opacity, the dominant contribution is more likely attributable to a very optically thick cloud deck at location most consistent with corundum and/or iron rich condensates. Future retrieval studies incorporating longer wavelength data (e.g. from the James-Webb Space Telescope) will resolve this question.

Our simple parameterisation of the cloud opacity precludes the detection of species-specific absorption features due to Mie scattering. However, the exponent (α) of the power-law opacity that we estimated ($\tau \propto \lambda^\alpha$, $\alpha = -2.45^{+0.63}_{-0.96}$ and $\alpha = -2.7^{+0.63}_{-1.45}$; see Figures 17 and 18) corresponds to a relatively steep reddening law, consistent with a cloud dominated by small, sub-micron, sized particles. We have attempted to reconstruct this opacity curve using Mie coefficients calculated for corundum and iron assuming a log-normal size distribution. Even for a very narrow log-normal distribution centred on sub-micron particles, the impact of large grains in the distribution tail tend to grey-out the opacity and we are unable to reproduce the red opacity seen in our retrieval. A Hansen distribution (Hansen 1971), however, is able to reproduce our retrieved cloud opacity curve for a mean effective radius $\sim 0.1 \mu\text{m}$, and an effective variances ~ 1 for both iron and corundum. The Hansen distribution was also preferred by Hiranaka et al. (2016) for reddening the spectra of field L dwarfs to match red L dwarfs, and is commonly used to describe particle distributions in terrestrial water clouds. It is worth noting that the forward grid models of Saumon & Marley (2008), assume a log-normal particle size distribution for their clouds, and find particle sizes of order $10\mu\text{m}$.

5 DISCUSSION AND CONCLUSIONS

Our first application of the retrieval technique to the cloudy atmospheres of two mid-L dwarfs has revealed a number of interesting features. Most significantly, both of our targets appear to have thermal profiles that are several hundred degrees cooler at depth than predicted by forward grid models for similar T_{eff} . In addition, both targets display warmer upper atmospheres than predicted by the same models. Our retrieved temperature in the upper atmosphere of 2M2224-0158 is in close agreement with that estimated by Sorahana et al. (2014). Our retrieval of a similar profile for the L4 spectral template 2M0500+0330, suggests that the mechanism responsible for heating the upper atmosphere of mid-L dwarfs may be widespread.

We confirmed that models which include clouds are preferred over cloud-free models. Moreover, an optically thick, non-grey, cloud deck is preferred over models with either grey or slab clouds. We have constrained the location of the cloud deck to near the 5 bar level in both cases. The temperature at this pressure is too high for stable silicate clouds and we conclude that the dominant cloud opacity arises from either iron condensate, corundum, or some combination of the two. In addition, we find that the non-grey opacity is suggestive of a cloud dominated by small particles.

Our cloud-free retrieval results are shown in the Appendix. Their profiles display similar morphology to that seen in Test Case 2 where an isothermal profile is substituted for the presence of a cloud. This bears resemblance to the suggestion by Tremblin et al. (2015, 2016) that a sufficiently shallow thermal profile, driven by non-equilibrium chemistry, can reproduce the spectral shape of L dwarfs.

It is interesting to note that, even with the inclusion of an optically thick, non-grey, cloud-deck, our cloudy retrieved profiles for both 2M2224-0158 and 2M0500+0330 have shallower gradients than the predictions of the grid models at lower pressures than ~ 1 bar. As noted earlier, this would require some form of stratospheric heating mechanism. The confidence range for the deeper profiles are consistent with them being essentially parallel to the grid model profiles (i.e. following the same adiabat). However, the profile for 2M2224-0158 appears marginally shallower, and both sets of confidence intervals allow even shallower gradients. We can thus not rule out that a mechanism such as that proposed by Tremblin et al. (2015, 2016) might be at work alongside the influence of thick clouds to shape the SEDs of these L dwarfs. If present, however, these effects appear to be secondary to the dramatic impact of the clouds, as illustrated in Figure 19.

We also note that our ability to accurately constrain T_{eff} using just the near-infrared spectra of these targets is impressive, and the close agreement between the extended wavelength predictions based on our retrieval and WISE photometry for these targets suggests our retrieved properties are, on the whole, sound.

Our retrieved gas abundances are broadly consistent with the expectations from our thermochemical model with a couple of exceptions. The striking disagreement between our retrieved CO abundance and that predicted by our thermochemical model for solar abundances, is concerning. This, coupled with the poor agreement between grid model spectra and the observed CO band head in the K band suggests

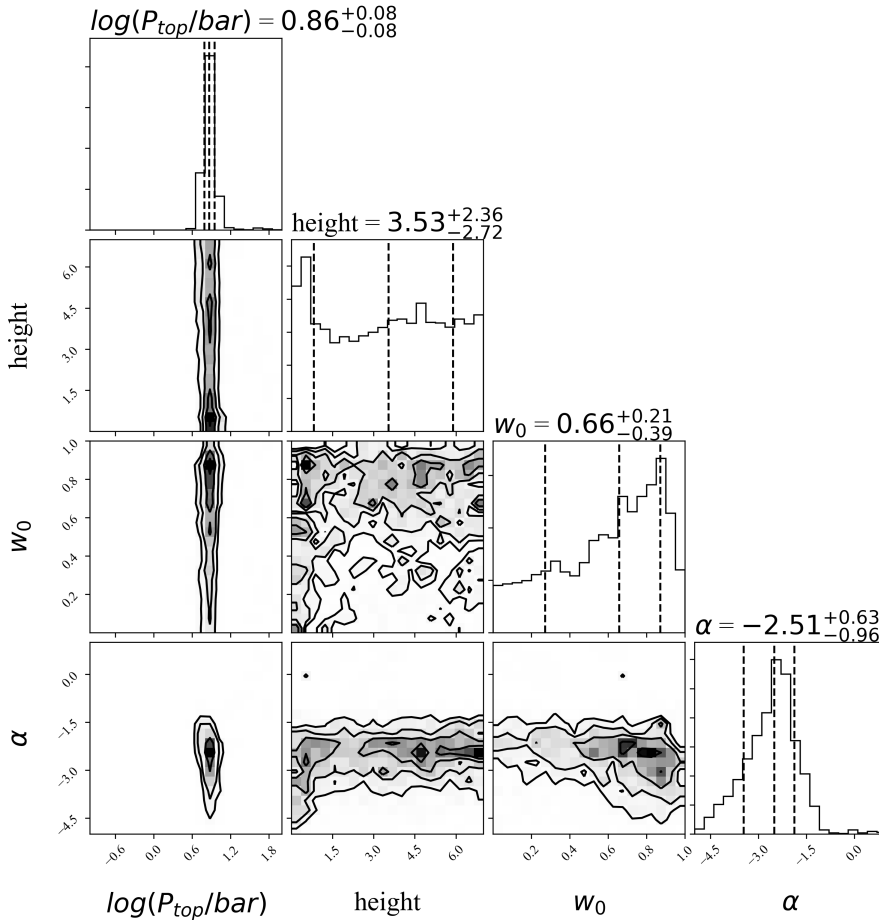


Figure 17. Posterior probability distributions for some of our retrieved cloud parameters in the selected cloud deck case for 2M0500+0330.

there may be a widespread problem with fitting this absorption feature which may reflect a hitherto unidentified problem with widely used CO opacities. Given its importance for deriving C/O ratios for directly imaged exoplanets (e.g. Konopacky et al. 2013), this is a key problem to solve over the coming years. More rigorous validation and testing of our ability to retrieve accurate gas abundances will be possible in future work where we will focus on benchmark L dwarfs for which detailed compositional constraints can be obtained via association to a primary star.

APPENDIX A: G570D RESULTS

Here we present our posterior distributions for the retrieval of the properties of G570D. In Figure A1 we show the retrieved thermal profile using the 5-parameter approximation of Madhusudhan & Seager (2009) compared to the retrieved profile from Line et al. (2015) and their corresponding grid model. In Figure A2 we show our posterior distributions for the rest of the parameters, again compared the retrieved values from Line et al. (2015).

APPENDIX B: CONTRIBUTION FUNCTIONS

The contribution functions for the retrievals under the non-grey optically thick cloud deck assumption are shown in Figures B1 and B2.

APPENDIX C: CLOUD-FREE RETRIEVALS RESULTS

Figures C1 and C2 show the random draws from the posterior and maximum likelihood spectra for the cloud-free retrieval cases for 2M0500+0330 and 2M2224-0158 respectively. Figures C3 and C4 show their retrieved thermal profiles, while Figures C5 and C6 show the posterior distributions for the retrieved parameters and derived properties under the same assumption.

ACKNOWLEDGEMENTS

Thanks to Stuart Littlefair for helpful discussions during the preparation of this manuscript. BB acknowledges financial support from the European Commission in the form of a Marie Curie International Outgoing Fellowship (PIOF-GA-2013- 629435). CV acknowledges support by NSF grant

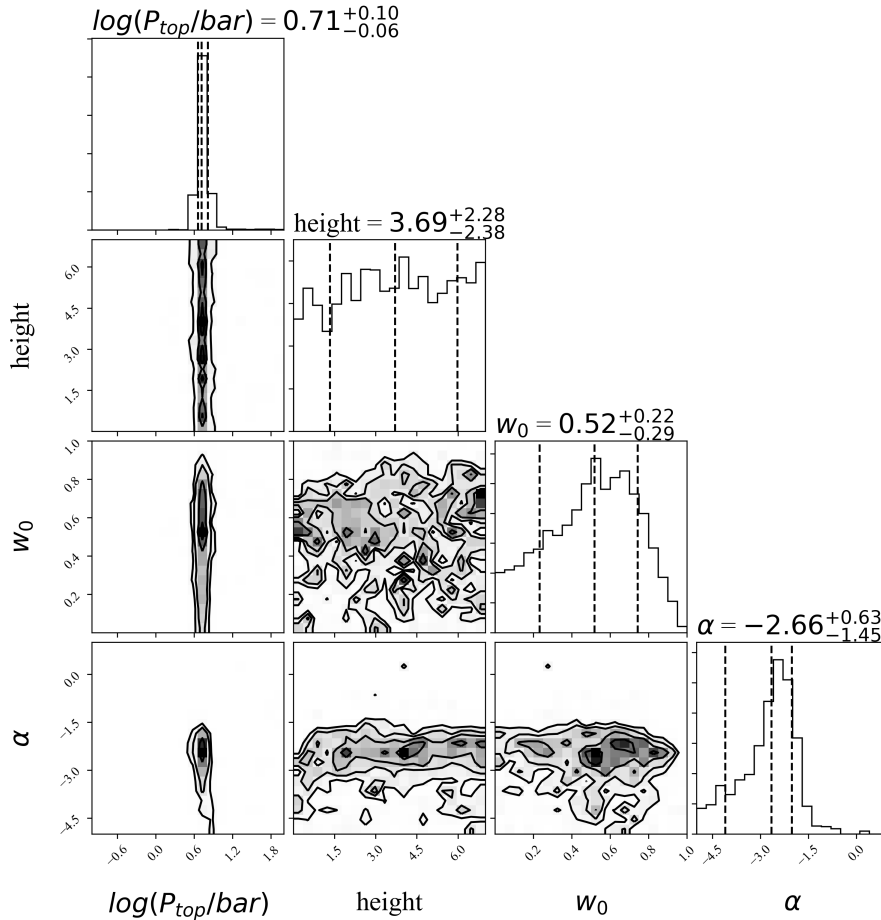


Figure 18. Posterior probability distributions for some of our retrieved cloud parameters in the selected cloud deck case for 2M2224-0158.

AST-1312305. DS is supported in part by a NASA Astrophysics Theory Program grant.

REFERENCES

- Allard F., Hauschildt P. H., 1995, *ApJ*, 445, 433
- Allard F., Homeier D., Freytag B., 2011, in *Astronomical Society of the Pacific Conference Series*, Vol. 448, 16th Cambridge Workshop on Cool Stars, Stellar Systems, and the Sun, Johns-Krull C., Browning M. K., West A. A., eds., p. 91
- Allard N. F., Kielkopf J. F., Allard F., 2007a, *European Physical Journal D*, 44, 507
- Allard N. F., Spiegelman F., Kielkopf J. F., 2007b, *A&A*, 465, 1085
- Allers K. N., Liu M. C., 2013, *ApJ*, 772, 79
- Asplund M., Grevesse N., Sauval A. J., Scott P., 2009, *ARA&A*, 47, 481
- Baraffe I., Chabrier G., Allard F., Hauschildt P. H., 2002, *A&A*, 382, 563
- Baraffe I., Chabrier G., Barman T. S., Allard F., Hauschildt P. H., 2003, *A&A*, 402, 701
- Bardalez Gagliuffi D. C., Burgasser A. J., Gelino C. R., Looper D. L., Nicholls C. P., Schmidt S. J., Cruz K., West A. A., Gizis J. E., Metchev S., 2014, *ApJ*, 794, 143
- Barstow J. K., Aigrain S., Irwin P. G. J., Fletcher L. N., Lee J.-M., 2013, *MNRAS*, 434, 2616
- Burgasser A. J., Cruz K. L., Cushing M., Gelino C. R., Looper D. L., Faherty J. K., Kirkpatrick J. D., Reid I. N., 2010, *ApJ*, 710, 1142
- Burgasser A. J., Looper D. L., Kirkpatrick J. D., Cruz K. L., Swift B. J., 2008, *ApJ*, 674, 451
- Burningham B., Cardoso C. V., Smith L., Leggett S. K., Smart R. L., Mann A. W., Dhital S., Lucas P. W., Tinney C. G., Pinfield D. J., Zhang Z., Morley C., Saumon D., Aller K., Littlefair S. P., Homeier D., Lodieu N., Deacon N., Marley M. S., van Spaandonk L., Baker D., Allard F., Andrei A. H., Canty J., Clarke J., Day-Jones A. C., Dupuy T., Fortney J. J., Gomes J., Ishii M., Jones H. R. A., Liu M., Magazzú A., Marocco F., Murray D. N., Rojas-Ayala B., Tamura M., 2013, *MNRAS*, 433, 457
- Burningham B., Leggett S. K., Homeier D., Saumon D., Lucas P. W., Pinfield D. J., Tinney C. G., Allard F., Marley M. S., Jones H. R. A., Murray D. N., Ishii M., Day-Jones A., Gomes J., Zhang Z. H., 2011, *MNRAS*, 414, 3590
- Burningham B., Pinfield D. J., Leggett S. K., Tinney C. G., Liu M. C., Homeier D., West A. A., Day-Jones A., Huefamo N., Dupuy T. J., Zhang Z., Murray D. N., Lodieu N., Barrado Y Navascués D., Folkes S., Galvez-Ortiz M. C., Jones H. R. A., Lucas P. W., Calderon M. M., Tamura

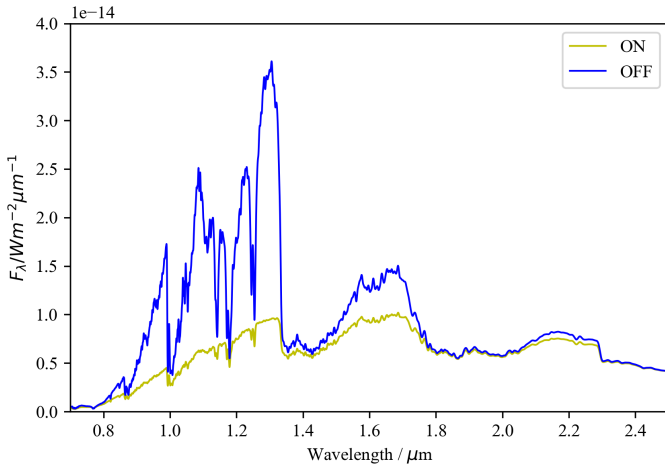


Figure 19. A comparison demonstrating the impact of the cloud deck opacity for our maximum-likelihood retrieval for the 2M2224-0158. All parameter are identical between the spectra, but one has the clouds turned on, and one turned off.

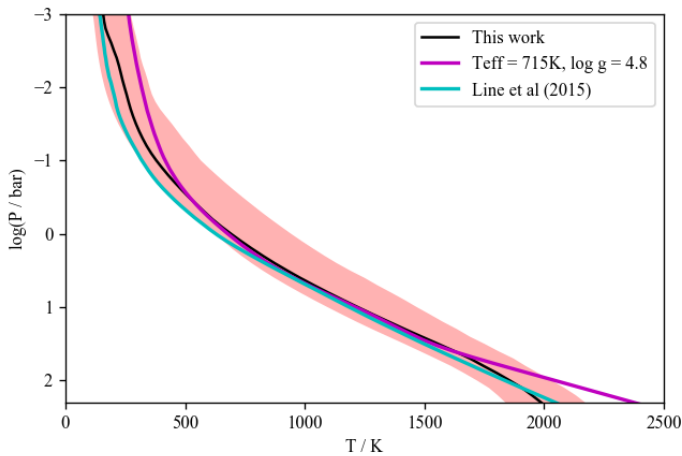


Figure A1. Our retrieved thermal profile for G570D. The median case thermal profile is shown as a solid black line, with the 1σ intervals is indicated with red. Also plotted are the retrieved profile and corresponding grid profile as shown in Line et al. (2015).

M., 2009, *MNRAS*, 395, 1237

Burrows A., Hubbard W. B., Saumon D., Lunine J. I., 1993, *ApJ*, 406, 158

Burrows A., Marley M. S., Sharp C. M., 2000, *ApJ*, 531, 438

Burrows A., Sudarsky D., Hubeny I., 2006, *ApJ*, 640, 1063

Chabrier G., Baraffe I., Allard F., Hauschildt P., 2000, *ApJ*, 542, 464

Cushing M. C., Marley M. S., Saumon D., Kelly B. C., Vacca W. D., Rayner J. T., Freedman R. S., Lodders K., Roellig T. L., 2008, *ApJ*, 678, 1372

Cushing M. C., Roellig T. L., Marley M. S., Saumon D., Leggett S. K., Kirkpatrick J. D., Wilson J. C., Sloan G. C., Mainzer A. K., Van Cleve J. E., Houck J. R., 2006, *ApJ*,

648, 614

Cushing M. C., Saumon D., Marley M. S., 2010, *AJ*, 140, 1428

Dieterich S. B., Henry T. J., Jao W.-C., Winters J. G., Hosey A. D., Riedel A. R., Subasavage J. P., 2014, *AJ*, 147, 94

Faherty J. K., Burgasser A. J., Cruz K. L., Shara M. M., Walter F. M., Gelino C. R., 2009, *AJ*, 137, 1

Faherty J. K., Burgasser A. J., Walter F. M., Van der Blik N., Shara M. M., Cruz K. L., West A. A., Vrba F. J., Anglada-Escudé G., 2012, *ApJ*, 752, 56

Faherty J. K., Rice E. L., Cruz K. L., Mamajek E. E., Núñez A., 2013, *AJ*, 145, 2

Fegley Jr. B., Lodders K., 1994, *Icarus*, 110, 117

—, 1996, *ApJ*, 472, L37

Filippazzo J. C., Rice E. L., Faherty J., Cruz K. L., Van Gordon M. M.,Looper D. L., 2015, *ApJ*, 810, 158

Foreman-Mackey D., Hogg D. W., Lang D., Goodman J., 2013, *PASP*, 125, 306

Freedman R. S., Lustig-Yaeger J., Fortney J. J., Lupu R. E., Marley M. S., Lodders K., 2014, *ApJS*, 214, 25

Freedman R. S., Marley M. S., Lodders K., 2008, *ApJS*, 174, 504

Gagné J., Faherty J. K., Cruz K. L., Lafrenière D., Doyon R., Malo L., Burgasser A. J., Naud M.-E., Artigau É., Bouchard S., Gizis J. E., Albert L., 2015, *ApJS*, 219, 33

Hansen J. E., 1971, *Journal of Atmospheric Sciences*, 28, 1400

Hiranaka K., Cruz K. L., Douglas S. T., Marley M. S., Baldassare V. F., 2016, *ApJ*, 830, 96

Hogg D. W., Bovy J., Lang D., 2010, *ArXiv e-prints*

Irwin P. G. J., Teanby N. A., de Kok R., Fletcher L. N., Howett C. J. A., Tsang C. C. C., Wilson C. F., Calcutt S. B., Nixon C. A., Parrish P. D., 2008, *J. Quant. Spec. Radiat. Transf.*, 109, 1136

Kass R. E., Raftery A. E., 1995, *Journal of the American Statistical Association*, 90, 773

Kataria T., Sing D. K., Lewis N. K., Visscher C., Showman A. P., Fortney J. J., Marley M. S., 2016, *ApJ*, 821, 9

King R. R., McCaughrean M. J., Homeier D., Allard F., Scholz R., Lodieu N., 2010, *A&A*, 510, A99+

Kirkpatrick J. D., Reid I. N., Liebert J., Gizis J. E., Burgasser A. J., Monet D. G., Dahn C. C., Nelson B., Williams R. J., 2000, *AJ*, 120, 447

Konopacky Q. M., Barman T. S., Macintosh B. A., Marois C., 2013, *Science*, 339, 1398

Lee J.-M., Heng K., Irwin P. G. J., 2013, *ApJ*, 778, 97

Liebert J., Reid I. N., Burrows A., Burgasser A. J., Kirkpatrick J. D., Gizis J. E., 2000, *ApJ*, 533, L155

Line M. R., Fortney J. J., Marley M. S., Sorahana S., 2014, *ApJ*, 793, 33

Line M. R., Marley M. S., Liu M. C., Morley C. V., Burningham B., Hinkel N. R., Teske J., Fortney J. J., 2016, *ArXiv e-prints*

Line M. R., Teske J., Burningham B., Fortney J., Marley M., 2015, *ArXiv e-prints*

Line M. R., Wolf A. S., Zhang X., Knutson H., Kammer J. A., Ellison E., Deroo P., Crisp D., Yung Y. L., 2013, *ApJ*, 775, 137

Lodders K., 1999, *ApJ*, 519, 793

—, 2002, *ApJ*, 577, 974

—, 2010, *Exoplanet Chemistry*, Wiley, p. 157

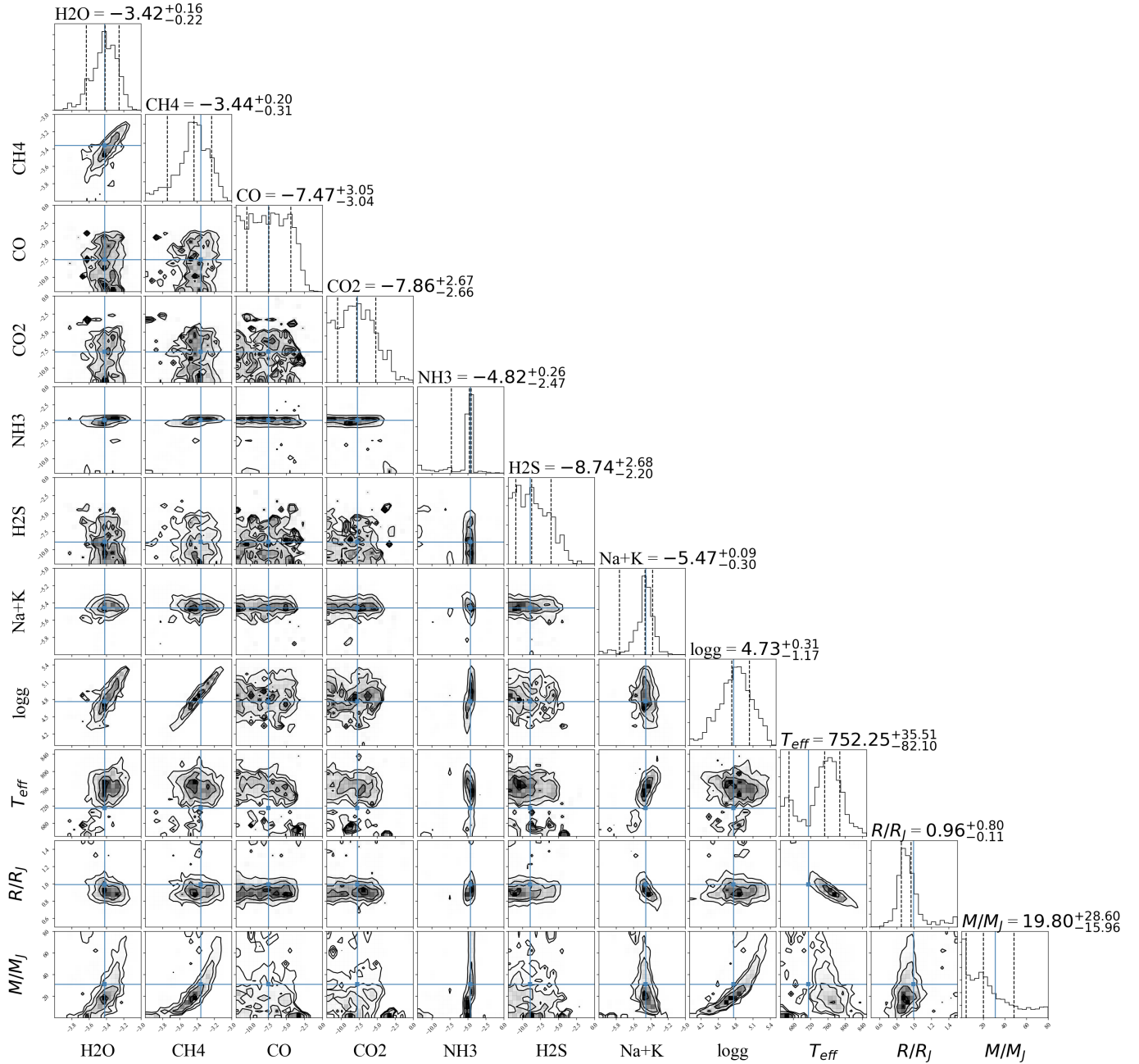


Figure A2. Posterior probability distributions for some our retrieved parameters G570D. Also shown are M , R and T_{eff} which are not directly retrieved, but are inferred from our retrieved parameters R^2/D^2 , $\log g$ and predicted spectra. The values found by Line et al. (2015) are shown with blue dashed lines.

Lodders K., Fegley B., 2002, *Icarus*, 155, 393

Lodders K., Fegley Jr. B., 2006, *Chemistry of Low Mass Substellar Objects*, Praxis Publishing Ltd, Chichester, UK, p. 1

Madhusudhan N., Seager S., 2009, *ApJ*, 707, 24

Manjavacas E., Bonnefoy M., Schlieder J. E., Allard F., Rojo P., Goldman B., Chauvin G., Homeier D., Lodieu N., Henning T., 2014, *A&A*, 564, A55

Manjavacas E., Goldman B., Alcalá J. M., Zapatero-Osorio M. R., Béjar V. J. S., Homeier D., Bonnefoy M., Smart R. L., Henning T., Allard F., 2016, *MNRAS*, 455, 1341

Marley M. S., Robinson T. D., 2015, *ARA&A*, 53, 279

Marley M. S., Saumon D., Goldblatt C., 2010, *ApJ*, 723, L117

Marley M. S., Saumon D., Guillot T., Freedman R. S., Hubbard W. B., Burrows A., Lunine J. I., 1996, *Science*,

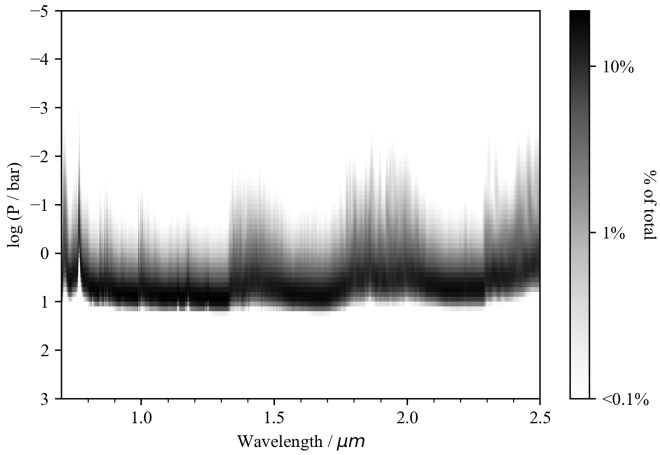


Figure B1. The contribution function for the maximum likelihood retrieval of 2M0500+0330 under the non-grey, optically thick cloud deck assumption. The grey-scale indicates the relative contributions of 0.1 dex thick layers.

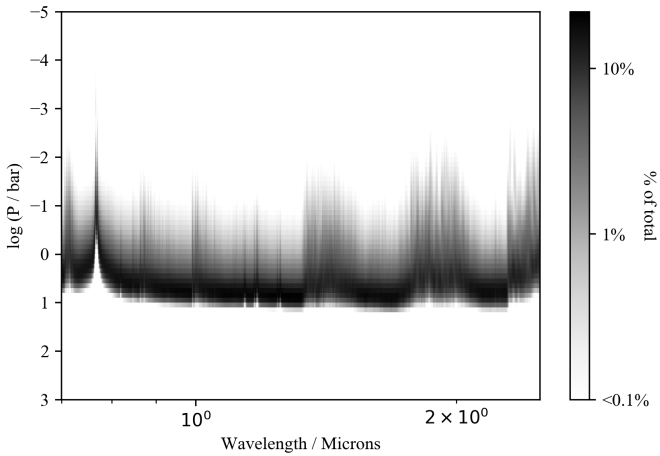


Figure B2. The contribution function for the maximum likelihood retrieval of 2M2224-0158 under the non-grey, optically thick cloud deck assumption. The grey-scale indicates the relative contributions of 0.1 dex thick layers.

272, 1919

Marley M. S., Seager S., Saumon D., Lodders K., Ackerman A. S., Freedman R. S., Fan X., 2002, *ApJ*, 568, 335

McBride B., Gordon S., 1994, Computer Program for Calculation of Complex Chemical Equilibrium Compositions and Applications I. Analysis. Reference Publication NASA RP-1311, NASA Lewis Research Center, National Aeronautics and Space Administration Lewis Research Center Cleveland, Ohio 44135-319, <https://www.grc.nasa.gov/WWW/CEAWeb/RP-1311.htm>

McKay C. P., Pollack J. B., Courtin R., 1989, *Icarus*, 80, 23

Morley C. V., Fortney J. J., Kempton E. M.-R., Marley M. S., Visscher C., Zahnle K., 2013, *ApJ*, 775, 33

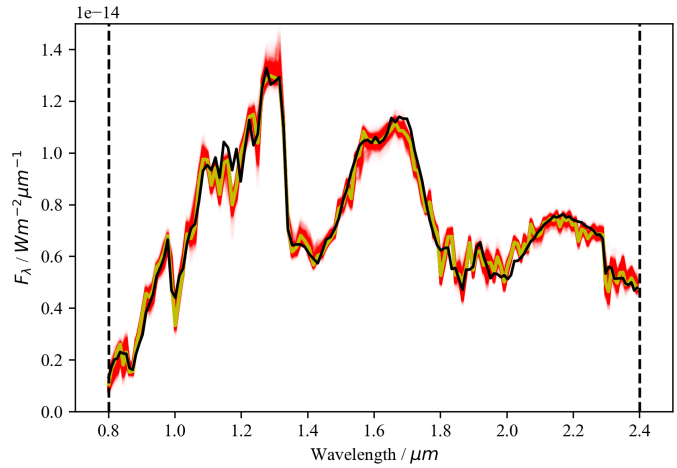


Figure C1. The 2M0500+0330 forward model output spectra for 5000 random draws from our final 2000 iterations (comprising 544000 independent samples) of the EMCEE sampler for the cloud-free case, shown in red. The maximum likelihood case is plotted in yellow, and the Spex spectrum for our target is plotted in black (Bardalez Gagliuffi et al. 2014).

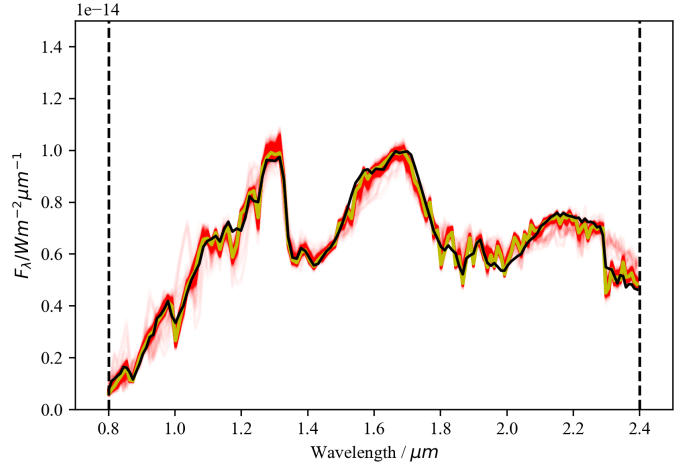


Figure C2. The 2M2224+0158 forward model output spectra for 5000 random draws from our final 2000 iterations (comprising 544000 independent samples) of the EMCEE sampler for the cloud-free case, shown in red. The maximum likelihood case is plotted in yellow, and the Spex spectrum for our target is plotted in black (Burgasser et al. 2010).

Morley C. V., Fortney J. J., Marley M. S., Visscher C., Saumon D., Leggett S. K., 2012, *ApJ*, 756, 172

Moses J. I., Line M. R., Visscher C., Richardson M. R., Nettelmann N., Fortney J. J., Barman T. S., Stevenson K. B., Madhusudhan N., 2013, *ApJ*, 777, 34

Moses J. I., Richardson M. R., Madhusudhan N., Line M. R., Visscher C., Fortney J. J., 2012, in *AAS/Division for Planetary Sciences Meeting Abstracts*, Vol. 44, AAS/Division for Planetary Sciences Meeting Abstracts, p. 103.02

Noll K. S., Geballe T. R., Leggett S. K., Marley M. S.,

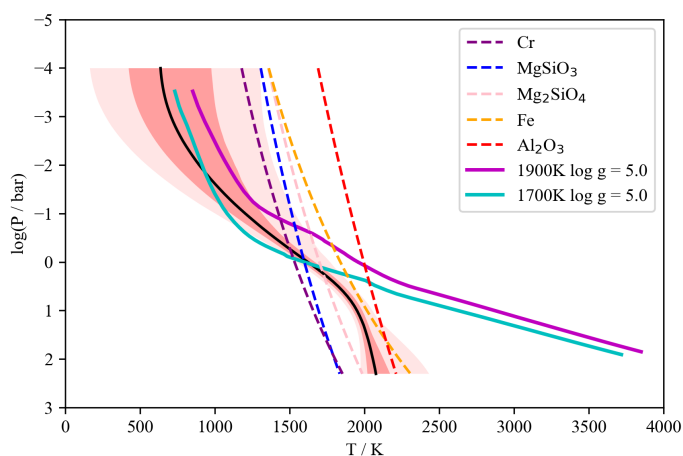


Figure C3. Our retrieved thermal profile for the cloud-free model for 2M0500-0330. The median case thermal profile is shown as a solid black line, with the 1σ and 2σ intervals are indicated with red and pink shading. Also plotted are condensation curves for likely cloud species, and the forward model grid (T,P) profiles for $f_{sed} = 3$, $\log g = 5.0$, for $T_{eff} = 1700\text{K}$ and 1900K , which bracket the T_{eff} estimated by Filippazzo et al. (2015), and that inferred from this retrieval model.

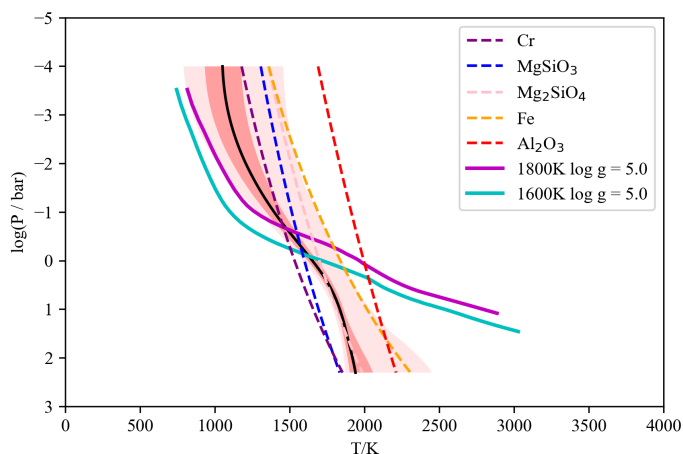


Figure C4. Our retrieved thermal profile for the cloud-free model for 2M2224-0158. The median case thermal profile is shown as a solid black line, with the 1σ and 2σ intervals are indicated with red and pink shading. Also plotted are condensation curves for likely cloud species, and the forward model grid (T,P) profiles for $f_{sed} = 3$, $\log g = 5.0$, for $T_{eff} = 1600\text{K}$ and 1700K , which bracket the T_{eff} estimated by Filippazzo et al. (2015), and that inferred from this retrieval model.

2000, ApJ, 541, L75

Partridge H., Schwenke D. W., 1997, J. Chem. Phys., 106, 4618

Rayner J. T., Toomey D. W., Onaka P. M., Denault A. J., Stahlberger W. E., Vacca W. D., Cushing M. C., Wang S., 2003, PASP, 115, 362

Reid I. N., Cruz K. L., Kirkpatrick J. D., Allen P. R., Mungall F., Liebert J., Lowrance P., Sweet A., 2008, AJ,

136, 1290

Rice E. L., Oppenheimer R., Zimmerman N., Roberts L. C., Hinkley S., 2015, PASP, 127, 479

Richard C., Gordon I. E., Rothman L. S., Abel M., Frommhold L., Gustafsson M., Hartmann J.-M., Hermans C., Lafferty W. J., Orton G. S., Smith K. M., Tran H., 2012, J. Quant. Spec. Radiat. Transf., 113, 1276

Rodgers C. D., 1976, Reviews of Geophysics and Space Physics, 14, 609

—, 2000, Inverse Methods for Atmospheric Sounding: Theory and Practice. World Scientific Publishing Co

Ryabchikova T., Pakhomov Y., 2015, Baltic Astronomy, 24, 453

Saumon D., Marley M. S., 2008, ApJ, 689, 1327

Saumon D., Marley M. S., Abel M., Frommhold L., Freedman R. S., 2012, ApJ, 750, 74

Skemer A. J., Morley C. V., Zimmerman N. T., Skrutskie M. F., Leisenring J., Buenzli E., Bonnefoy M., Bailey V., Hinz P., Defrére D., Esposito S., Apai D., Biller B., Brandner W., Close L., Crepp J. R., De Rosa R. J., Desidera S., Eisner J., Fortney J., Freedman R., Henning T., Hofmann K.-H., Kopytova T., Lupu R., Maire A.-L., Males J. R., Marley M., Morzinski K., Oza A., Patience J., Rajan A., Rieke G., Schertl D., Schlieder J., Stone J., Su K., Vaz A., Visscher C., Ward-Duong K., Weigelt G., Woodward C. E., 2016, ApJ, 817, 166

Skrutskie M. F., Cutri R. M., Stiening R., Weinberg M. D., Schneider S., Carpenter J. M., Beichman C., Capps R., Chester T., Elias J., Huchra J., Liebert J., Lonsdale C., Monet D. G., Price S., Seitzer P., Jarrett T., Kirkpatrick J. D., Gizis J. E., Howard E., Evans T., Fowler J., Fullmer L., Hurt R., Light R., Kopan E. L., Marsh K. A., McCallon H. L., Tam R., Van Dyk S., Wheelock S., 2006, AJ, 131, 1163

Sorahana S., Suzuki T. K., Yamamura I., 2014, MNRAS, 440, 3675

Stephens D. C., Leggett S. K., Cushing M. C., Marley M. S., Saumon D., Geballe T. R., Golimowski D. A., Fan X., Noll K. S., 2009, ApJ, 702, 154

Toon O. B., McKay C. P., Ackerman T. P., Santhanam K., 1989, J. Geophys. Res., 94, 16287

Tremaine S., Gebhardt K., Bender R., Bower G., Dressler A., Faber S. M., Filippenko A. V., Green R., Grillmair C., Ho L. C., Kormendy J., Lauer T. R., Magorrian J., Pinkney J., Richstone D., 2002, ApJ, 574, 740

Tremblin P., Amundsen D. S., Chabrier G., Baraffe I., Drummond B., Hinkley S., Mourier P., Venot O., 2016, ApJ, 817, L19

Tremblin P., Amundsen D. S., Mourier P., Baraffe I., Chabrier G., Drummond B., Homeier D., Venot O., 2015, ApJ, 804, L17

Tsuji T., 2002, ApJ, 575, 264

Tsuji T., Ohnaka K., Aoki W., 1996, A&A, 305, L1

Visscher C., 2012, ApJ, 757, 5

Visscher C., Lodders K., Fegley Jr. B., 2006, ApJ, 648, 1181

—, 2010, ApJ, 716, 1060

Wakeford H. R., Visscher C., Lewis N. K., Kataria T., Marley M. S., Fortney J. J., Mandell A. M., 2016, ArXiv e-prints

Wright E. L., Eisenhardt P. R. M., Mainzer A. K., Ressler M. E., Cutri R. M., Jarrett T., Kirkpatrick J. D., Padgett D., McMillan R. S., Skrutskie M., Stanford S. A., Cohen

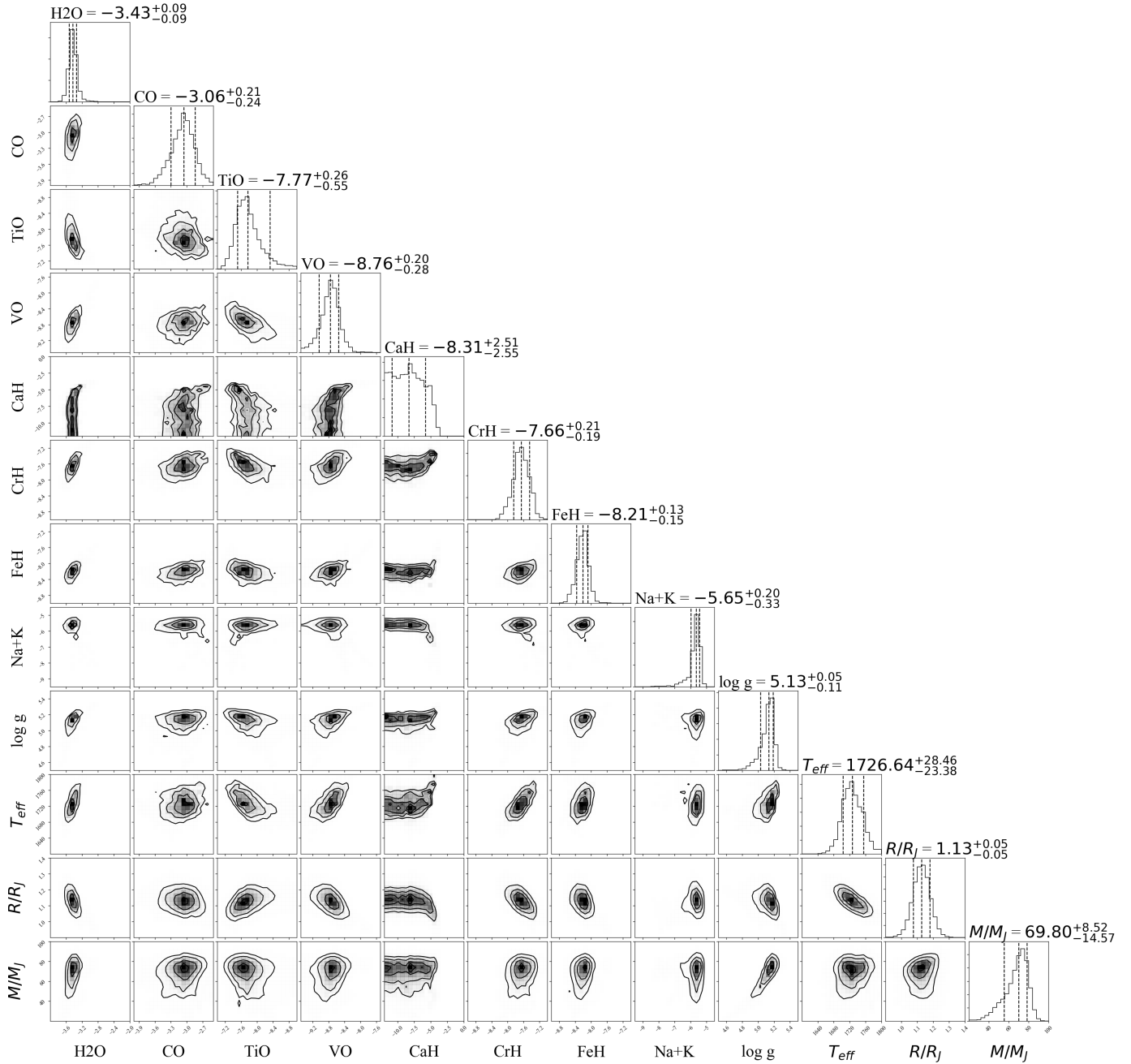


Figure C5. Posterior probability distributions for some our retrieved parameters in the cloud-free case for 2M0500+0330. Also shown are M , R and T_{eff} which are not directly retrieved, but are inferred from our retrieved parameters R^2/D^2 , $\log g$ and predicted spectra.

M., Walker R. G., Mather J. C., Leisawitz D., Gautier III T. N., McLean I., Benford D., Lonsdale C. J., Blain A., Mendez B., Irace W. R., Duval V., Liu F., Royer D., Heinrichsen I., Howard J., Shannon M., Kendall M., Walsh A. L., Larsen M., Cardon J. G., Schick S., Schwalm M., Abid M., Fabinsky B., Naes L., Tsai C.-W., 2010, AJ, 140, 1868

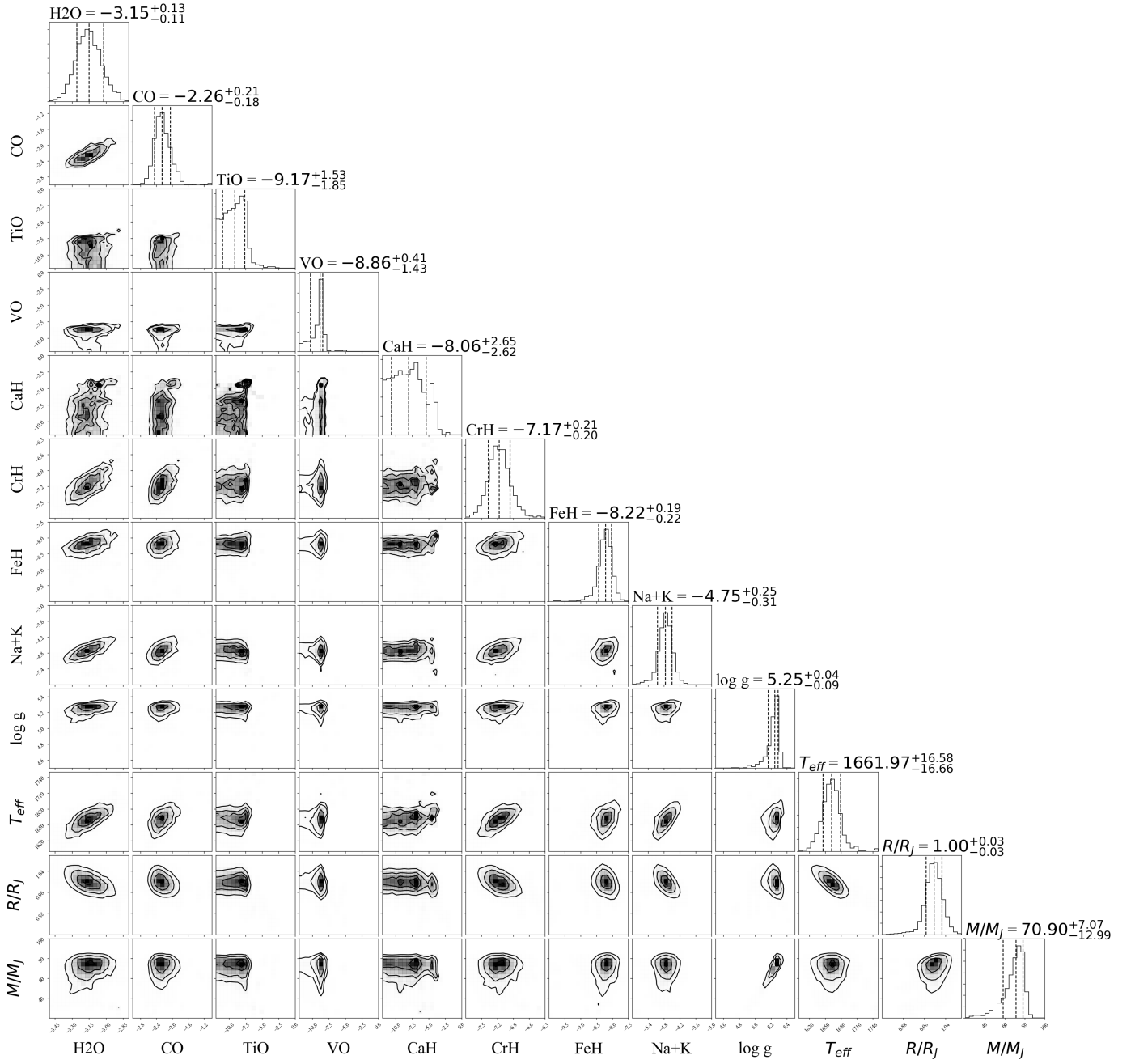


Figure C6. Posterior probability distributions for some of our retrieved parameters in the cloud-free case for 2M2224-0158. Also shown are M , R and T_{eff} which are not directly retrieved, but are inferred from our retrieved parameters R^2/D^2 , $\log g$ and predicted spectra.

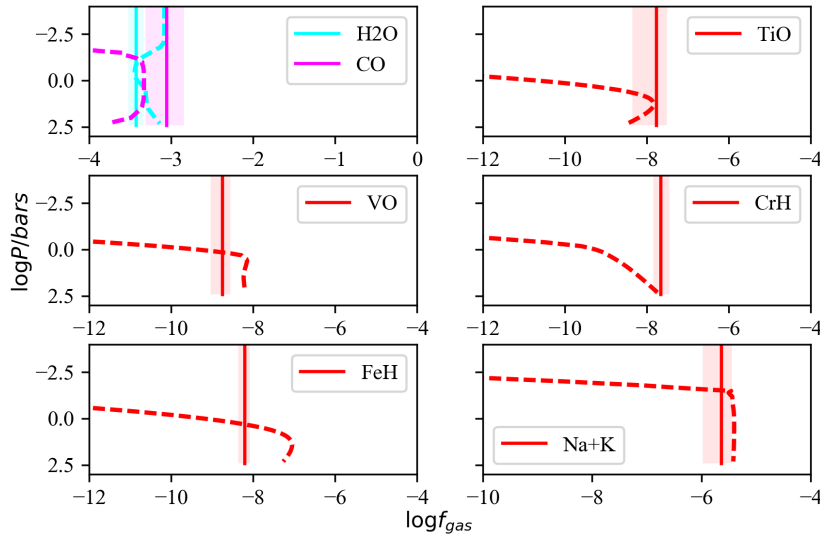


Figure C7. Retrieved abundances for 2M0500+0330 and predicted thermochemical equilibrium abundances for our retrieved profile under the cloud-free assumption.

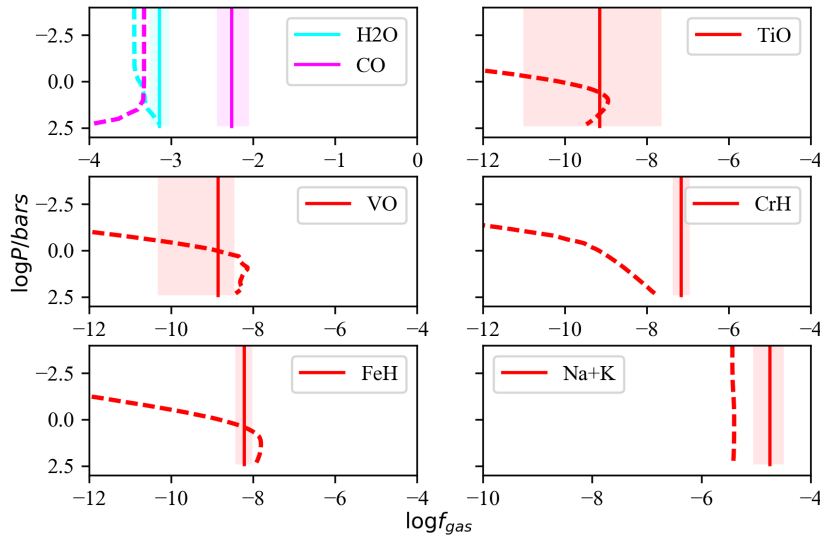


Figure C8. Retrieved abundances for 2M2224-0158 and predicted thermochemical equilibrium abundances for our retrieved profile under the cloud-free assumption.