

# SIMULATIONS OF GRB JETS IN A STRATIFIED EXTERNAL MEDIUM: DYNAMICS, AFTERGLOW LIGHTCURVES, JET BREAKS AND RADIO CALORIMETRY

FABIO DE COLLE<sup>1</sup>, ENRICO RAMIREZ-RUIZ<sup>1</sup>, JONATHAN GRANOT<sup>2,3,4</sup>, & DIEGO LOPEZ-CAMARA<sup>5</sup>

*Draft version November 30, 2011*

## ABSTRACT

The dynamics of gamma-ray burst (GRB) jets during the afterglow phase is most reliably and accurately modeled using hydrodynamic simulations. All published simulations so far, however, have considered only a uniform external medium, while a stratified external medium is expected around long duration GRB progenitors. Here we present simulations of the dynamics of GRB jets and the resulting afterglow emission for both uniform and stratified external media with  $\rho_{\text{ext}} \propto r^{-k}$  for  $k = 0, 1, 2$ . The simulations are performed in two dimensions using the special relativistic version of the *Mezcal* code. Common to all calculations is the initiation of the GRB jet as a conical wedge of half-opening angle  $\theta_0 = 0.2$  whose radial profile is taken from the self-similar Blandford-McKee solution. The dynamics for stratified external media ( $k = 1, 2$ ) are broadly similar to those derived for expansion into a uniform external medium ( $k = 0$ ). The jet half-opening angle is observed to start increasing logarithmically with time (or radius) once the Lorentz factor  $\Gamma$  drops below  $\theta_0^{-1}$ . For larger  $k$  values, however, the lateral expansion is faster at early times (when  $\Gamma > \theta_0^{-1}$ ) and slower at late times with the jet expansion becoming Newtonian and slowly approaching spherical symmetry over progressively longer timescales. We find that contrary to analytic expectations, there is a reasonably sharp jet break in the lightcurve for  $k = 2$  (a wind-like external medium) although the shape of the break is affected more by the viewing angle (for  $\theta_{\text{obs}} \leq \theta_0$ ) than by the slope of the external density profile (for  $0 \leq k \leq 2$ ). Steeper density profiles (i.e. increasing  $k$  values) are found to produce more gradual jet breaks while larger viewing angles cause smoother and later appearing jet breaks. The counter-jet becomes visible as it becomes sub-relativistic, and for  $k = 0$  this results in a clear bump-like feature in the light curve. However, for larger  $k$  values the jet decelerates more gradually, causing only a mild flattening in the radio light curve that might be hard to discern when  $k = 2$ . Late time radio calorimetry, which makes use of a spherical flow approximation near the non-relativistic transition, is likely to consistently over-estimate the true energy by up to a factor of a few for  $k = 2$ , but either over-predict or under-predict it by a smaller factor for  $k = 0, 1$ .

*Subject headings:* gamma rays: bursts - hydrodynamics - methods: numerical - relativity

## 1. INTRODUCTION

The dynamics of gamma-ray burst (GRB) outflows depends on the density distribution of the ambient medium as well as on the structure of the relativistic expanding ejecta (e.g., Meszaros et al. 1998). Up to the deceleration epoch, where most of the energy is transferred to the shocked external medium, the dynamics is regulated by the local radial structure of the ejecta, while at later times (as the blastwave decelerates) it mainly depends on its global angular structure. In the absence of characteristic scales, self-similar, spherically symmetric solutions exist (Blandford & McKee 1976, hereafter Blandford-McKee) and they are widely used to interpret observational data on GRB afterglows. However, even the simplest departure from this ideal model could drastically modify the afterglow behavior. Anisotropies in the GRB outflow, for example, affect the afterglow light curve when the mean jet energy per solid angle within the visible region evolves significantly. As the

jet decelerates, the relativistic beaming weakens and the visible region increases. If the outflow is collimated into a narrow jet with reasonably sharp edges, this occurs at the time when the bulk Lorentz factor  $\Gamma$  equals the inverse of jet half-opening angle  $\theta_0$ . A simple analytic calculation using the usual scaling laws leads then to a steepening of the afterglow flux decay rate, known as a *jet break* (Rhoads 1997; Sari, Piran & Halpern 1999; Kumar & Panaitescu 2000). It is however clear from numerical studies that such simple scalings do not provide an accurate description of the afterglow (Granot et al. 2001; Zhang & MacFadyen 2009; Meliani & Keppens 2010; van Eerten et al. 2010; Wygoda et al. 2011; van Eerten & MacFadyen 2011; van Eerten et al. 2011). Such numerical studies have so far been limited to the case of a uniform external density while the interaction of relativistic GRB jets with a non-uniform medium remains poorly understood.

Motivated by this, here we study the dynamics of two-dimensional (2D) axially symmetric impulsive jets propagating in a spherically symmetric stratified medium of rest-mass density  $\rho = Ar^{-k}$  and the resulting afterglow emission. Since long duration GRBs (Gehrels et al. 2009) have massive star progenitors whose winds are expected to modify their immediate surroundings (Chevalier et al. 2004; Ramirez-Ruiz et al. 2005; van Marle et al. 2008; Mimica & Giannios 2011), we consider both steady and time varying stellar winds as possible surrounding or external media for the GRB jet evolution. The case  $k = 2$  corresponds to a stellar wind for a massive star

<sup>1</sup> TASC, Department of Astronomy & Astrophysics, University of California, Santa Cruz, CA 95064, USA; fabio@ucolick.org

<sup>2</sup> Racah Institute of Physics, The Hebrew University, Jerusalem 91904, Israel

<sup>3</sup> Raymond and Beverly Sackler School of Physics & Astronomy, Tel Aviv University, Tel Aviv 69978, Israel

<sup>4</sup> Centre for Astrophysics Research, University of Hertfordshire, College Lane, Hatfield, AL10 9AB, UK

<sup>5</sup> Instituto de Ciencias Nucleares, Universidad Nacional Autónoma de México, Ap. 70-543, 04510 D.F., México

progenitor (Chevalier & Li 2000; Panaitescu & Kumar 2000; Ramirez-Ruiz et al. 2001; Wu et al. 2005) with a constant ratio of its pre-explosion mass loss rate  $\dot{M}_w$  and wind velocity  $v_w$ , in which case  $\rho = Ar^{-2}$ , where  $A = \dot{M}_w/(4\pi v_w)$ . However, since the dependence of  $\dot{M}_w$  and  $v_w$  on the time  $t_w$  before the stellar explosion that triggers the GRB is highly uncertain, it is worth considering other values of  $k$ . For example, if  $\dot{M}_w \propto t_w^a$  and  $v_w \propto t_w^b$  then the location of a wind element at the time of the explosion is  $r = t_w v_w(t_w) \propto t_w^{1+b}$  so that  $t_w \propto r^{1/(1+b)}$  and we have  $\dot{M}_w \propto r^{a/(1+b)}$ ,  $v_w \propto r^{b/(1+b)}$  and  $\rho \propto r^{-2+(a-b)/(1+b)}$ . For a constant wind velocity ( $b = 0$ ) this gives  $k = 2 - a$ , which corresponds to  $k = 2$  for  $a = 0$  (constant wind mass flux) and  $k = 1$  for  $a = 1$  (linearly increasing mass flux with time).

A brief description of our numerical methods and initial conditions for both jet and external medium models is given in § 2. Detailed hydrodynamic simulations of GRB jets interacting with  $k = 1, 2$  stratified media are presented in § 3 and § 4, where § 3 is devoted to the jet dynamics and the resulting afterglow emission is discussed in § 4. For completeness and comparison, the interaction with a constant-density medium ( $k = 0$ ) is also discussed, although the reader is referred to De Colle et al. (2011) for a review of the current state of hydrodynamical modeling with  $k = 0$ . Our conclusions are summarized in § 5.

## 2. NUMERICAL METHODS

### 2.1. Code Description and Initial Conditions

To study the dynamics of a GRB jet propagating in a stratified external medium, we carry out a set of two-dimensional simulations using the special relativistic hydrodynamic (SRHD) version of the adaptive mesh refinement (AMR) code *Mezcal* (De Colle et al. 2011). The *Mezcal* code integrates the SRHD equations by using a second-order (in space and time, except in shocks where it reduces to first order in space by a minmod limiter) upwind scheme based on the relativistic HLL method (Schneider et al. 1993). The equation of state (EOS), relating enthalpy to pressure and density, is taken from Ryu et al. (2006), which approximates the exact Sygne (1971) EOS with an error of 0.5%. This EOS properly recovers the correct values of the adiabatic index  $\Gamma$  in the ultra-relativistic ( $\Gamma = 4/3$ ) and Newtonian ( $\Gamma = 5/3$ ) regimes. The reader is referred to De Colle et al. (2011) for a detailed description of the code and an extensive list of numerical tests.

For the initial conditions we use a conical wedge of half-opening angle  $\theta_0$ , within which the initial radial profiles of pressure, density and Lorentz factor in the post-shock region are taken from the spherical Blandford-McKee self-similar solutions for a stratified medium:

$$\rho = A_k r^{-k}. \quad (1)$$

Two-dimensional simulations with  $k = 0$  (homogeneous medium),  $k = 1$  and  $k = 2$  (corresponding to a steady stellar wind medium) are then evolved to study the lateral expansion and deceleration of the jet.

To accurately study the dynamics near the jet break time, an initial shock Lorentz factor of  $\Gamma_{\text{sh},0} = \sqrt{2} \times 20$  and an initial half-opening jet angle  $\theta_0 = 0.2$  rad are selected, so that  $\Gamma_{\text{sh},0} \gg \theta_0^{-1}$ . The isotropic equivalent energy is taken to be  $E_{\text{iso}} = 10^{53}$  erg, corresponding to a total jet energy content of  $E_{\text{jet}} = E_{\text{iso}}(1 - \cos \theta_0) \sim 2 \times 10^{51}$  erg. The ambient medium is assumed to have a density  $\rho_0 = A_0 = 1.67 \times 10^{-24}$  g cm $^{-3}$  (for

the case  $k = 0$ , which corresponds to  $\rho_0 = n_0 m_p c^2$  with  $n_0 = 1$  cm $^{-3}$ ), and a pressure  $p = \eta \rho_0 c^2$ , with  $\eta = 10^{-10}$ . The value of  $\eta$  has no bearing on the outcome of the simulation as long as the Mach number remains large, i.e.  $\mathcal{M} \sim \eta^{-1/2} v_{\text{sh}}/c \gg 1$ , where  $v_{\text{sh}}$  is the shock velocity. As the simulation continues to evolve well into the Newtonian regime, this condition can be expressed as  $v_{\text{sh}} \gg 3 (\eta/10^{-10})^{1/2}$  km s $^{-1}$ . The density profiles in the cases  $k = 1, 2$  are fixed here by assuming the jet break radius (in the lab frame) to be the same for all  $k$ :  $R_j(k) = R_j(k = 0)$ . This can be rewritten (Blandford & McKee 1976) as

$$R_j = \left( \frac{(17 - 4k)E_{\text{iso}}}{8\pi A_k \Gamma_j^2 c^2} \right)^{1/(3-k)} = \left( \frac{17E_{\text{iso}}}{8\pi A_0 \Gamma_j^2 c^2} \right)^{1/3}, \quad (2)$$

where  $\Gamma_j = \sqrt{2}/\theta_0$ .

From equation (2) we have  $A_k = A_0 R_j^k (17 - 4k)/17$ , so that the density of the ambient medium is given by

$$\rho = \frac{17 - 4k}{17} A_0 \left( \frac{r}{R_j} \right)^{-k}, \quad (3)$$

which guarantees  $R_j$  to remain unchanged for varying  $k$ . With this constraint, the value of the density at the jet break radius  $\rho(r = R_j)$  differs, compared to the  $k = 0$  case, by factors of 13/17 and 9/17 for  $k = 1$  and  $k = 2$ , respectively. In the simulations presented in this paper,  $R_j = 9.655 \times 10^{17}$  cm, corresponding to a jet break time of  $t_j = R_j/c \approx 372$  days.

The jet is expected to begin decelerating to non-relativistic speeds at

$$t_{\text{NR}} \approx \frac{L_{\text{Sedov}}}{c} = \left( \frac{(3 - k)E_{\text{iso}}}{4\pi A_k c^2} \right)^{1/(3-k)}, \quad (4)$$

corresponding to  $t_{\text{NR}} \approx 970, 3800$  and  $11000$  days (in the lab frame) for  $k = 0, 1, 2$  respectively.

The simulations with  $k = 0, 1$  employ a spherical computational domain of radial and angular size  $(L_r, L_\theta) = (1.1 \times 10^{19}$  cm,  $\pi/2$ ) while the simulation with  $k = 2$  uses  $(L_r, L_\theta) = (2.2 \times 10^{19}$  cm,  $\pi/2$ ). The inner boundaries are located at  $(1.8, 1.2, 0.3) \times 10^{17}$  cm for  $k = (0, 1, 2)$ , respectively. The AMR code uses a basic grid of (100, 6) cells in the  $(r, \theta)$  directions, and 15 ( $k = 0, 1$ ) or 16 ( $k = 2$ ) levels of refinement, corresponding to a maximum resolution of  $(\Delta r_{\text{min}}, \Delta \theta_{\text{min}}) = (6.71 \times 10^{12}$  cm,  $1.60 \times 10^{-5}$  rad). To keep the resolution of the relativistic thin shell  $\Delta \propto t^{4-k}$  approximately constant, the maximum number of levels of refinement  $N_{\text{levels}}$  is decreased with time (De Colle et al. 2011) as  $N_{\text{levels}} = \max[7, N_{\text{levels},0} - (4 - k) \log(t/t_0)/\log(2)]$ . The simulations are halted after 150 years. We also carried out a higher resolution simulation (for the  $k = 2$  case) using a basic grid of (1000, 16) cells in the  $(r, \theta)$  directions, and 14 levels of refinement. The light curves computed from this simulation are very similar to those obtained from the lower resolution run, implying that convergence has been achieved.

The *Mezcal* code is parallelised using the ‘‘Message Passing Interface’’ (MPI) library, enabling the highest resolution simulation to be run in about two weeks on a local supercomputer with 160 processors, and the low resolution in about a quarter of that time.

### 2.2. Afterglow Radiation

To compute the afterglow radiation, we use the method described in De Colle et al. (2011). As the main goal of the current calculations is to study the effect of the jet dynamics on the afterglow lightcurves, a simple model is employed to calculate the emanating radiation. It assumes synchrotron to be the primary emitting mechanism, while ignoring self-absorption and inverse Compton scattering. Furthermore, a simple prescription for electron cooling (De Colle et al. 2011) is assumed, which is similar to the one used by Granot et al. (2001) and Zhang & MacFadyen (2009).

In addition to the contributions to the afterglow radiation computed by post-processing the results of the hydrodynamics simulations, contributions from earlier lab frame times are included, corresponding to the blast-wave decelerating from  $\Gamma_1 = \Gamma(\chi = 1) = \Gamma_{\text{sh}}/\sqrt{2} = 200$  to  $\Gamma_1 = 20$ . Here  $\chi(r/R_{\text{sh}}) = 1 + 2(4-k)\Gamma_{\text{sh}}^2(1 - r/R_{\text{sh}})$  is a self-similar variable which quantifies the distance from the shock front (Blandford & McKee 1976). These are computed using the same conical wedge taken out of the Blandford-McKee self-similar solution that is used for initializing our simulations. The mapping of the Blandford-McKee solution is implemented by using a high resolution grid, starting at the position of the shock front (which varies with time) and sampling the Blandford-McKee solution at intervals of fixed  $\Delta\Gamma = 0.01$ . The values of the proper density  $\rho$ , internal energy density  $e_{\text{int}}$ , 4-velocity  $u$  and self-similar variable  $\chi$  replace those coming from the simulations, and are taken from the Blandford-McKee self-similar solution at the relevant lab frame time. In order to calculate the contributions to the observed radiation, the *mapped* jet radial structure is subsequently integrated over all angles ( $0 \leq \theta \leq \theta_0$ ;  $0 \leq \phi \leq 2\pi$ ). This procedure provides a reasonable description of the afterglow radiation at earlier times and it is significantly more accurate than ignoring the contributions from lab frame times preceding the start of the simulation.

The microphysics processes responsible for field amplification and particle acceleration are parametrized here by assuming that the magnetic field everywhere in the shocked region holds a fraction  $\epsilon_B = 0.1$  of the local internal energy density in the flow, while the non-thermal electrons just behind the shock hold a fraction  $\epsilon_e = 0.1$  of the internal energy, and have a power-law energy distribution,  $N(\gamma_e) \propto \gamma_e^{-p}$ , with  $p = 2.5$ . We also assume the source to be at a redshift of  $z = 1$ , corresponding to a luminosity distance of  $d_L = 2.05 \times 10^{28}$  cm. The afterglow radiation code has been tested in De Colle et al. (2011). The simulation with  $k = 0$ , in particular, gives afterglow light curves that are nearly identical to those computed by Zhang & MacFadyen (2009).

### 3. JET DYNAMICS IN A STRATIFIED MEDIUM

Detailed hydrodynamic simulations of the evolution of a GRB jet in a stratified medium with  $k = 0, 1, 2$  are presented in Figures 1 and 2 where the density and velocity contours of the expanding ejecta at various times are plotted. A transient phase caused by the sharp lateral discontinuity in the initial conditions is observed in all cases as the shock expands laterally and a rarefaction front moves towards the jet axis. This initial phase, during which shearing instabilities are observed to be prominent at the contact discontinuity (separating the *original* Blandford-McKee wedge material and the later shocked external medium), lasts for about a dynamical timescale and is followed by the establishment of an egg-like bow shock structure that persists throughout the simulations. The velocity quadrivector (Figure 2) shows strong stratifica-

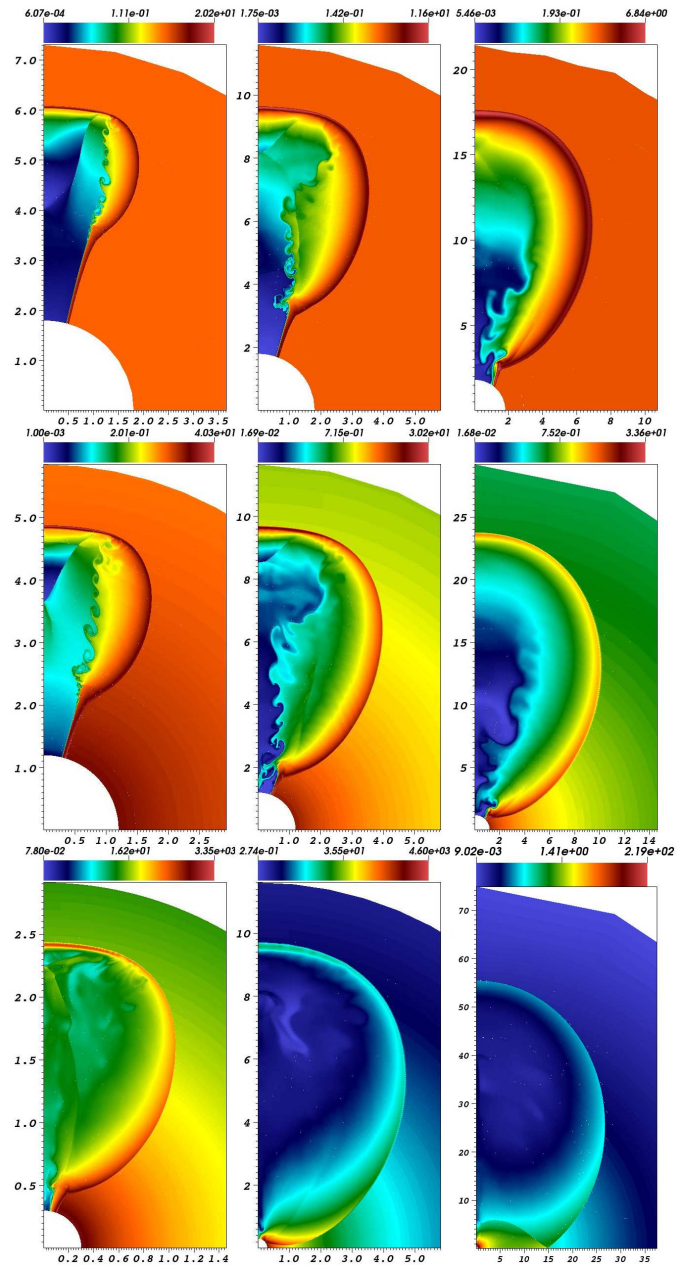


FIG. 1.— The temporal evolution of GRB jets in a stratified medium with  $k = 0, 1, 2$  (top to bottom panels, respectively). The three plotted times, whose exact values dependent on  $k$ , have been selected so that the Blandford-McKee Lorentz factor in the post-shock region  $\Gamma(\chi = 1)$  is equal to 10, 5 and 2 (left to right). Shown are logarithmic lab frame density cuts in  $\text{cm}^{-3}$ . Calculations were done in two-dimensional spherical coordinates with the axes corresponding to the  $r$ - and  $z$ - directions in units of  $10^{17}$  cm. The position of the shock front corresponding to a  $\Gamma(\chi = 1) = 5$  is the same for all  $k$  values, consistently with the normalization used in the simulations (see equation 2).

tion in the  $\theta$  direction. The expansion velocity of the jet remains mainly radial at most angles, with a non-relativistic angular component being prominent at large angles. The substructures seen in the velocity quadrivector along the  $z$ -axis at late times (generated by the convergence of turbulent flow) carry a small fraction of the energy and have a negligible effect on the lightcurves.

Similar resulting bow shock structures are observed for  $k = 0, 1$  and 2. However, because the rate at which mass

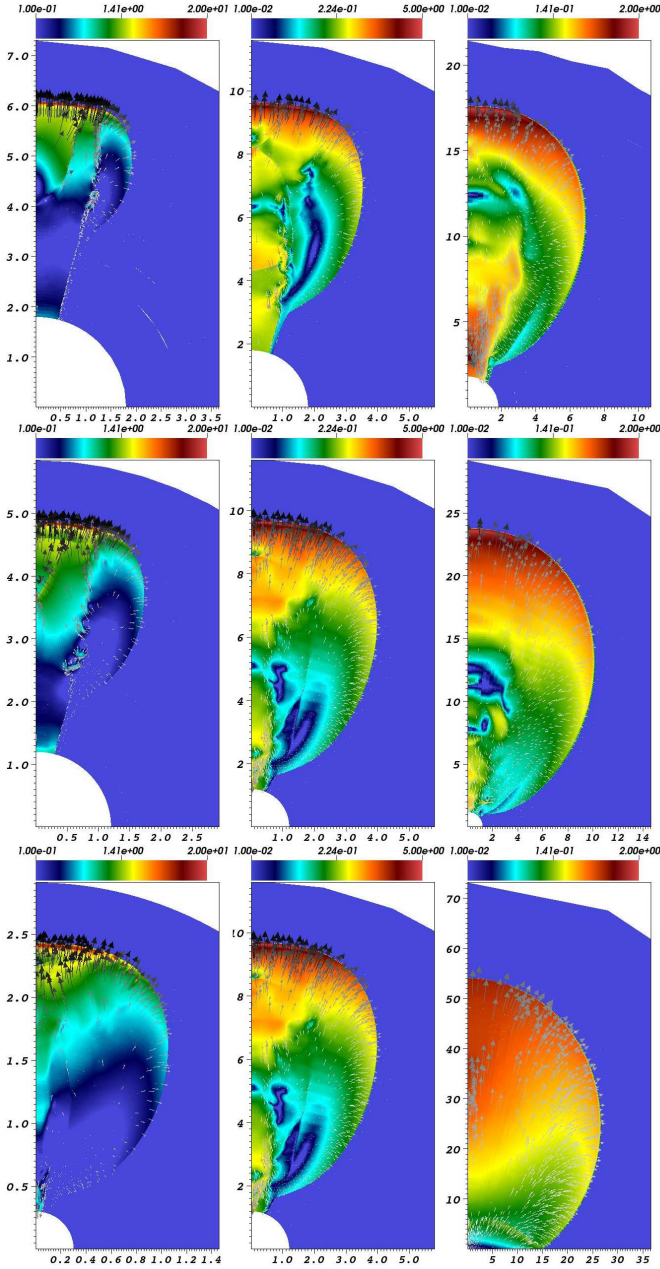


FIG. 2.— The same evolutionary sequence depicted in Figure 1 but for the absolute value of the velocity quadrivector. The superposed velocity field arrows are represented by a *gray scale* color scheme linear with respect to the 3-velocity, with dark corresponding to speeds  $\sim c$  and lighter to  $v \ll c$ .

is swept-up is larger for smaller values of  $k$ , the bow shock lateral expansion augments with increasing  $k$ . As clearly seen in Figure 3, the ratio between the bow shock width and height as the ejecta expand changes with  $k$ . This can be understood as follows. Small values of  $k$  correspond to a larger increase in the swept-up external mass and larger decrease in the Lorentz factor. For the spherical case, in particular,  $M(< R) \propto R^{3-k}$  and  $\Gamma \propto R^{-(3-k)/2}$ , and the same trend should persist for the non-spherical case.

The velocity quadrivector,  $u = \Gamma v/c = \Gamma\beta$ , of the expanding jets are shown in Figure 4 for three different angle-integrated quantities: mass, energy and emissivity. The mean value of  $u$  is larger when weighted over the energy or emissivity than over the shocked rest-mass until  $t \lesssim 10 \times t_j$ . This clearly il-

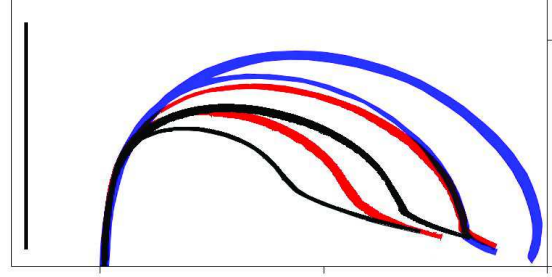


FIG. 3.— A comparison between the bow shock structures depicted in Figure 1 for  $k = 0$  (black),  $k = 1$  (red) and  $k = 2$  (blue). The two times have been selected so that the jet has the same Lorentz factor of 10 and 5 in all simulations. The evolutionary scale unit of  $\frac{1}{2}ct$  is indicated with a black transverse bar. The origin of the axis is located at the right bottom corner and the jets main direction of propagation is toward negative  $x$  in this figure. The simulations are normalized with respect to  $ct$ .

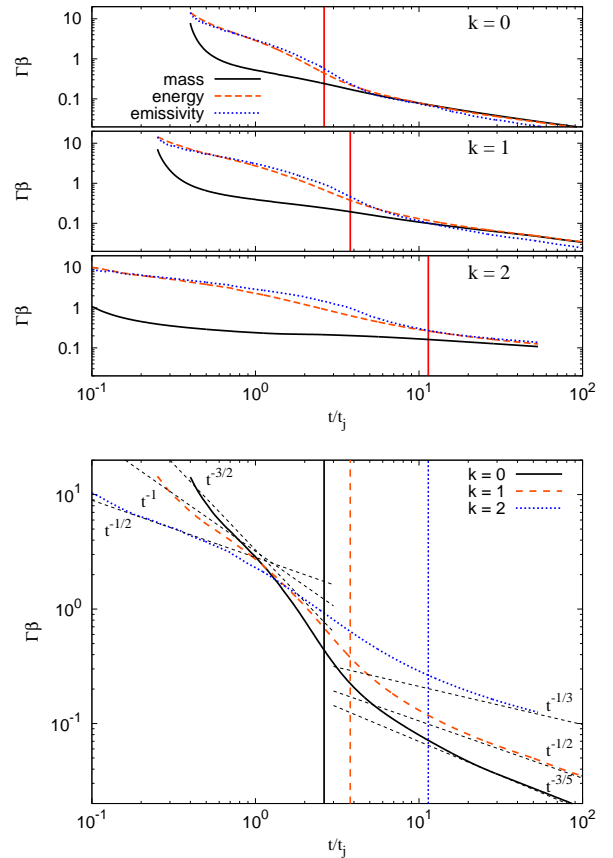


FIG. 4.— The temporal evolution (in the lab frame) of the velocity quadrivector,  $u = \Gamma v/c = \Gamma\beta$ , in units of the jet break time. *Upper panel*: The different lines give the evolution of  $u$  within the jet when averaged over (rest-) mass, energy (excluding rest mass) and over the emissivity (or contribution to the observed flux for a distant observer along the jet axis) at  $10^{17}$  Hz for the evolutionary sequences shown in Figure 1. The non-relativistic transition time,  $t_{\text{NR}}(E_{\text{iso}})$ , is shown in the figure as solid vertical lines for  $k = 0, 1, 2$ . *Lower panel*: A comparison between the velocity quadrivector  $u(t)$  averaged over energy for  $k = 0, 1, 2$ . The non-relativistic transition time,  $t_{\text{NR}}(E_{\text{iso}})$ , is shown as a thin vertical line with the same line-style and color as the thick lines for the corresponding  $u(t)$ . The Blandford-McKee and Sedov-Taylor self-similar solutions are plotted as black thin dashed lines together with the corresponding  $-d \log u/d \log t$  slopes.

illustrates, in agreement with previous analytical and numerical results limited to the case  $k = 0$  (Granot et al. 2001; Zhang & MacFadyen 2009), that during the relativistic phase, most of the shocked rest mass resides in relatively slow material at the edges of the jet, while most of the energy is stored in the fastest moving material near the head of the jet.

As illustrated in Figure 4, the Blandford-McKee and Sedov-Taylor self-similar solutions fail to provide an adequate description of the jet dynamics at  $t_j \lesssim t \lesssim t_{\text{NR}}(E_{\text{iso}})$  with the disagreement becoming less pronounced before  $t_j$  and after  $t_{\text{NR}}(E_{\text{iso}})$ . Between these two limiting cases,  $-d \log u/d \log t$  evolves at early and late times between the two asymptotic slope values, as seen in the bottom panel of Figure 4. The evolution of  $-d \log u/d \log t$  is, however, non-monotonic as it first increases above  $(3 - k)/2$  and only then decreases down to  $(3 - k)/(5 - k)$ . This behavior is mainly caused by the faster decrease in  $\Gamma$  compared to a spherical flow at  $t > t_j$  due to the lateral expansion of the jet. It also relates to the fact that the Blandford-McKee solution depends on  $E_{\text{iso}}$  while the corresponding Sedov-Taylor solution uses the jet's true energy,  $E_{\text{jet}}$  and, as a result, the ratio of  $u(t)$  for these two limiting cases is  $\sim \theta_0^{-1}$  at  $t = t_{\text{NR}}(E_{\text{jet}})$  and  $\sim \theta_0^{-2/(5-k)}$  at  $t = t_{\text{NR}}(E_{\text{iso}}) \sim \theta_0^{-2/(3-k)} t_{\text{NR}}(E_{\text{jet}})$ .

Figures 5 and 6 show the resulting  $R_{\perp}(t)$ ,  $R_{\parallel}(t)$  and  $\theta_j(t)$  for  $k = 0, 1, 2$  and different recipes for estimating the transverse, parallel and angular size scales within the jet (e.g. when averaged over mass, energy and emissivity). For all values of  $k$  the early lateral spreading of the jet, which starts around  $t \sim t_j$ , is observed to initially involve only a modest fraction of the total energy, with the bulk of the energy reaching angles well above  $\theta_0$  at significantly later times.

For  $k = 0$ , previous numerical simulations and analytical models assuming a small lateral expansion for  $t \sim t_{\text{NR}}$  (e.g. Granot, Ramirez-Ruiz & Loeb 2005) have shown that spherical symmetry is approached on timescales much larger than  $t_{\text{NR}}$ . In particular, Figure 5 shows that the growth of  $R_{\parallel}$  is essentially stalled at  $t \sim t_{\text{NR}}$  while  $R_{\perp}$  continues to grow as the flow gradually approaches spherical symmetry. For increasing  $k$  this effect is less pronounced, since  $R_{\parallel}$  continues to increase even after  $t_{\text{NR}}(E_{\text{iso}})$ , albeit more slowly. This contributes to the faster growth in  $\theta_j$  for lower  $k$ -values at late times, contrary to the opposite situation at early times ( $t \lesssim t_j$ ). This causes GRB jets expanding into steeper density profiles to approach spherical symmetry at progressively later times as argued by Ramirez-Ruiz & MacFadyen (2010) for  $k = 2$ .

Since the rate of lateral spreading of the jet increases as  $\Gamma$  decreases (see, e.g., equation 2 of Granot 2007) and  $\Gamma(R_j) = \theta_0^{-1}$  is the same for all  $k$ , then the jet lateral spreading is expected to increase with  $k$  for  $R \lesssim R_j$  (where  $\Gamma(R)$  decreases with  $k$  for a given  $R$ ), while the opposite should hold for  $R \gtrsim R_j$  (where, for a given  $R$ ,  $\Gamma(R)$  increases with  $k$ ). Such a behavior is also seen in analytic models (Granot 2007; Granot & Piran 2011).

Figure 5 also plots the temporal evolution of  $\Gamma R_{\perp}/R_{\parallel} \approx \Gamma \theta_j$ , which is observed to approach unity at  $t \gg t_j$ . This should be compared with the results of semi-analytic models (Rhoads 1997; Sari, Piran & Halpern 1999; Kumar & Panaitescu 2000, e.g.). These models predict  $\Gamma \theta_j \approx 1$  at  $t \gtrsim t_j$ , and  $\Gamma$  to decrease rapidly with lab frame time  $t$ , which is not observed here. In the simulations,  $\Gamma$  decreases rather slowly with  $t$  (as a power-law). The jet angular size  $\theta_j$  (see Figure 6), on the other hand, is observed to increase only logarithmically with  $t$  for all  $k$  until the flow becomes

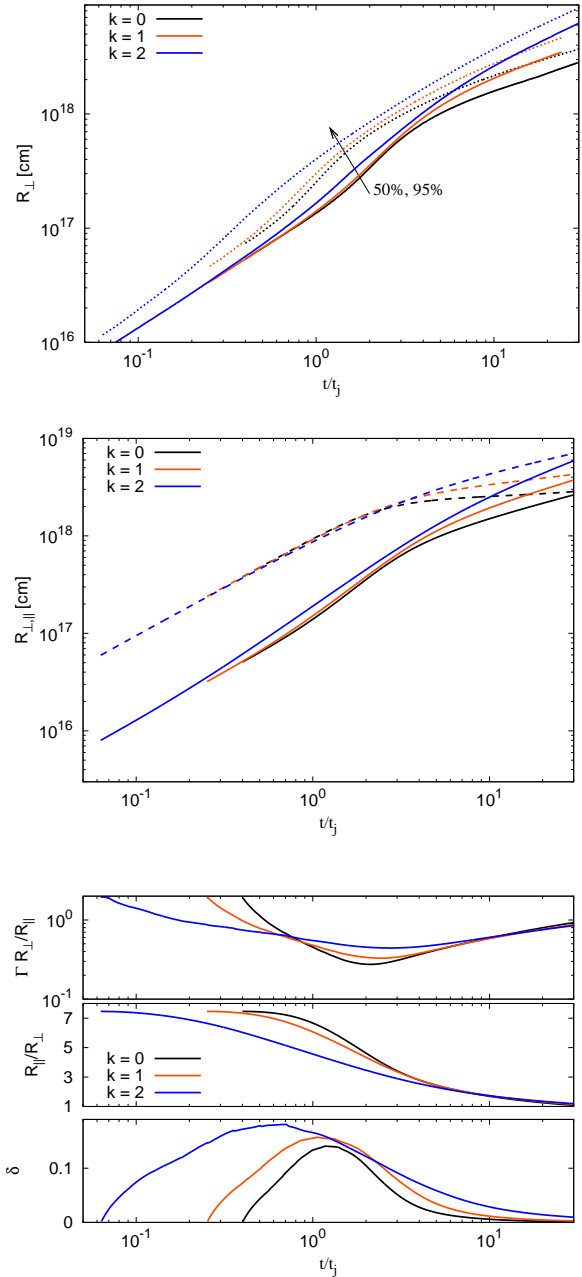


FIG. 5.— Temporal evolution (in the lab frame) of  $R_{\perp}$ ,  $R_{\parallel}$ ,  $(\Gamma R_{\perp}/R_{\parallel})$ ,  $(R_{\parallel}/R_{\perp})$  and  $\delta = d(R_{\perp}/R_{\parallel})/dt$  in units of the jet break time. Here  $R_{\perp}$  and  $R_{\parallel}$  are the transverse (cylindrical radius) and parallel (along the  $z$  axis) scales of the expanding jet, respectively. The different lines give the evolution (top panel) of  $R_{\perp}$  defined as the transverse scale of the jet that contains 50% (solid) or 95% (dashed) of the total energy excluding rest mass (top panel) and the evolution (middle, bottom panels) of  $R_{\perp}$  ( $R_{\parallel}$ ) averaged over the total energy excluding rest mass.

non-relativistic.

As shown in Figure 6, the weighted mean of  $\theta_j$  over the emissivity (and to a slightly lesser extent over the energy) remains practically constant until  $t/t_j \sim$  a few, while the weighted mean over the shocked rest mass is significantly larger, in accord with earlier results (Granot et al. 2001; Piran & Granot 2001; Zhang & MacFadyen 2009). This indicates that, as argued before, a large fraction of the swept-up external rest mass is concentrated at the edges of the jet, while most of the energy and emission lies near the head. More-

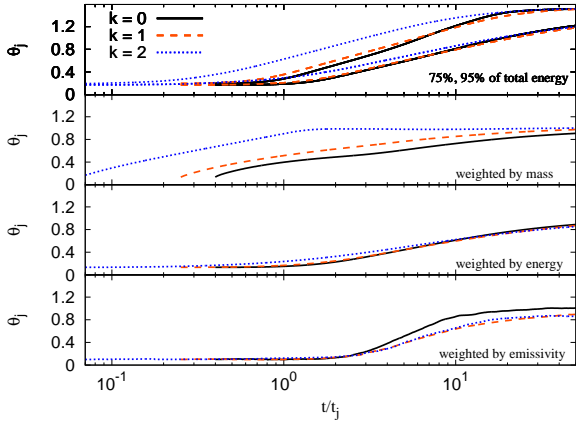


FIG. 6.— The evolution of the jet half-opening angle  $\theta_j$  as a function of time for different  $k$  values. The various panels give  $\theta_j$  derived based on the angle-integrated mass, energy (excluding rest mass) and emissivity (at  $10^{17}$  Hz). Also plotted is the evolution of  $\theta_j$  computed as the characteristic angular scale containing 75% or 95% of the total energy (excluding rest mass).

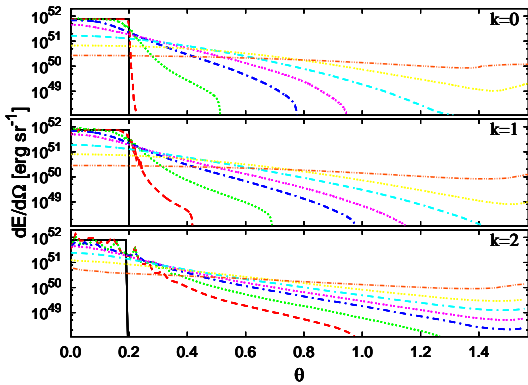


FIG. 7.— The angular distribution of the energy content in the expanding jet (excluding rest mass) at  $t = 0$  (black line), 0.5 (red), 1 (green), 2 (dark blue), 5 (pink), 10 (light blue), 20 (yellow), 50 (orange) years.

over, it implies that (as discussed above and seen in the temporal evolution of  $\delta$  depicted at the bottom of Figure 5) the lateral expansion at early times,  $t \lesssim t_j$ , is significantly faster for larger values of  $k$ , while the situation is reversed at late times.

Figure 7 plots the temporal evolution of the energy (excluding rest energy) per solid angle,  $\epsilon = dE/d\Omega$ , as a function of the angle  $\theta$  from the jet symmetry axis, for  $k = 0, 1, 2$ . At  $t \gtrsim 50$  yrs the energy distribution appears nearly spherical for all  $k$ s. At earlier times, a clear  $k$ -dependence trend is observed, where the energy spreads to larger solid angles faster for a more stratified medium, but a correlation is less evident when one compares  $\epsilon(\theta)$  for different  $k$ -values at the same four velocity  $u$  rather than the same lab frame time  $t$ .

Abundant confirmation is provided here that the dynamics of GRB jets are greatly modified by the radial profile of the surrounding circumburst density. Most analytic formalisms (e.g., Rhoads 1999) derive an exponential lateral spreading with lab frame time or radius at  $t > t_j$ , which ultimately erases all information about the initial jet opening angle and relies solely on the true energy content of the jet:  $E_{\text{jet}}$ . No exponential lateral expansion is observed in our study for  $k = 1, 2$ , consistent with previous numerical work for expansion in a constant density medium (Granot et al. 2001; Zhang & MacFadyen 2009; van Eerten & MacFadyen 2011).

As illustrated in Figure 6, the evolution of the jet’s angular scale containing a constant fraction of the total energy is logarithmic and is not self-similar as it retains memory of the initial jet opening angle. The deviation from the expected self-similar exponential lateral expansion behavior (Gruzinov 2007) might be at least partly due to  $u$  rapidly decreasing with the polar angle  $\theta$  from the jet symmetry axis, so that the flow is no longer ultra-relativistic ( $u \gg 1$ ) as it has been previously assumed. Even with the expectation that such a self-similar solution would be only very slowly attained (Gruzinov 2007), the maximal Lorentz factor at the head of the jet in this formalism is predicted to decrease exponentially with time, which appears to be inconsistent with our numerical results.

The resolution of this apparent inconsistency between analytic models and numerical simulations can be attributed to the modest values of  $\theta_0$  used in the simulations, which result in the breakdown of the analytic models, which assume  $\Gamma \gg 1$  and  $\theta_j \ll 1$  soon after the jet starts spreading sideways ( $\Gamma < \theta_0^{-1}$ ) and before it can reach a phase of exponential lateral expansion (Wygoda et al. 2011; Granot & Piran 2011). In the small region in which the analytical models are valid:  $1 \ll \Gamma < \theta_0^{-1}$ , there is reasonable agreement with simulation results (Wygoda et al. 2011). A generalization of these analytic models to any values of  $\Gamma$  or  $\theta_j$  (Granot & Piran 2011) shows reasonable agreement with the results of simulations from the early ultra-relativistic stage to the late Newtonian stage. Such generalized analytic models predict that if the jet is initially extremely narrow then there should still be an early phase of exponential lateral spreading. However, these models make the simplifying approximation of a uniform jet, while in practice  $u$  quickly drops with  $\theta$ . This causes a breakdown of the  $u \gg 1$  assumption used to derive the self-similar solution, which is only slowly attained even under ideal conditions (Gruzinov 2007).

#### 4. AFTERGLOW LIGHTCURVES

Figure 8 shows the emerging light curves at frequencies ranging from the radio to gamma-rays ( $\nu = 10^9, 10^{11}, 10^{13}, 10^{15}, 10^{17}, 10^{19}$  Hz), and corresponding spectra at different observed times  $t_{\text{obs}}$ , for  $k = 0, 1, 2$ , including the effects of electron cooling and the contribution from a mapped Blandford-McKee solution (with  $20 \leq \max(\Gamma) \leq 200$ ). Figure 9 shows the light curves computed for  $\nu = 10^9, 10^{13}$  and  $10^{17}$  Hz, for the two dimensional simulation and the Blandford-McKee conical wedge, as in Figure 8, but illustrating the contributions to the lightcurve arising from the various evolutionary stages of the blast wave, quantified here by considering the emission from lab frame times where  $\Gamma_{\text{sh}}(t)/\sqrt{2}$ , given by the Blandford-McKee solution, ranges between 10 and 20, 5 and 10, 2 and 5, 1 and 2 respectively. As expected, lower Lorentz factors contribute to the observed flux at later times. A slightly more subtle effect is that at the same observed time the flux at low frequencies comes from slightly later lab frame times  $t$  (corresponding to a lower Blandford-McKee Lorentz factor  $\Gamma_{\text{sh}}(t)$ ). This is because there is a lower flux contribution from the sides of the jet compared to the center, as reflected by the fact that the afterglow image is more limb-brightened at higher frequencies and less so at lower frequencies (Granot, Piran & Sari 1999; Granot & Loeb 2001; Granot 2008), resulting in a smaller typical angular delay time ( $t_\theta = R(t) \approx R\theta^2/2c$ ) in the arrival of photons to the observer (which is along the jet axis in these figures). As a result, the flux at the same observed time  $t_{\text{obs}}$  is dominated by larger lab

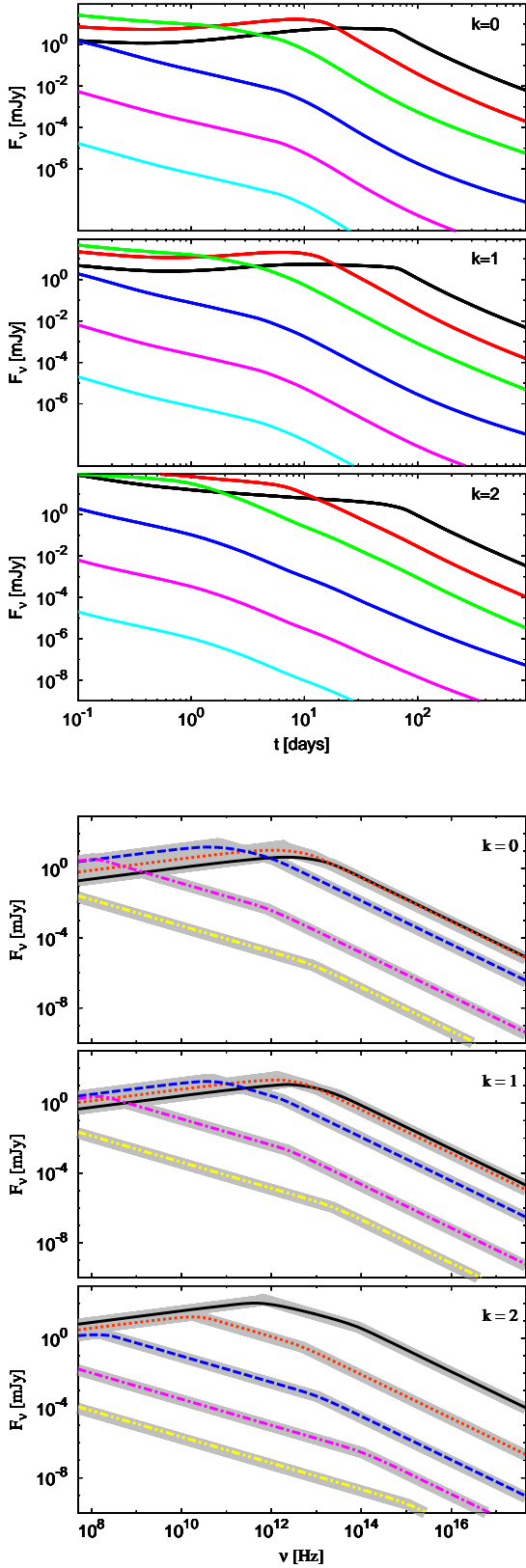


FIG. 8.— Light curves at  $\nu = 10^9, 10^{11}, 10^{13}, 10^{15}, 10^{17}, 10^{19}$  Hz (black, red, green, blue, purple, cyan respectively; *top panels*) and spectra at  $t_{\text{obs}} = 0.1, 1, 10, 100, 1000$  days (black/continuous line, orange/dotted, blue/dashed, purple/dash-dotted, yellow/dash-dash-dotted; *bottom panels*) for the models  $k = 0, 1, 2$  (top to bottom panels), calculated including electron cooling and the contribution from a mapped Blandford-McKee solution (with  $20 \leq \max(\Gamma) \leq 200$ ).

frame times  $t$ .

The spectra at different observer times are shown in Figure 8. For all values of  $k$ , the spectra evolves from a fast cooling (with  $\nu_c < \nu_m$  and  $F_\nu \propto \nu^{1/3}, \nu^{-1/2}, \nu^{-p/2}$  for  $\nu < \nu_c$ ,  $\nu_c < \nu < \nu_m$ ,  $\nu > \nu_c$  respectively) to a slow cooling regime (with  $\nu_m < \nu_c$  and  $F_\nu \propto \nu^{1/3}, \nu^{(1-p)/2}, \nu^{-p/2}$  for  $\nu < \nu_m$ ,  $\nu_m < \nu < \nu_c$ ,  $\nu > \nu_m$  respectively). The characteristic frequency  $\nu_m$  quickly drops with time with an asymptotic slope of  $-2.9, -2.6, -2$  for  $k = 0, 1, 2$  respectively, (while one expects  $\nu_m \propto t^{-(15-4k)/(5-k)}$ , which is relatively close to our result), while  $\nu_c$  increases at late times as  $\nu_c \propto t$ , that is, with a slope independent on the particular stratification of the ambient medium (for comparison, in the Sedov-Taylor regime one expects  $\nu_c \propto t^{(2k-1)/(5-k)}$ ).

As shown in §3, a jet moving in a stratified medium (with  $k = 1$  and  $k = 2$ ) decelerates to sub-relativistic speed over larger distances with respect to a jet moving in an homogeneous medium ( $k = 0$ ). The consequences of it on the light curve are particularly evident at radio frequencies (Figure 9), where the contribution from mildly- and sub-relativistic material is negligible in the  $k = 2$  case and dominant in the  $k = 0$  up to  $t \sim 10^3$  days.

Figures 8 and 9 show a pan-chromatic dip or flattening in the lightcurves at around half a day for  $k = 0$ , a third of a day for  $k = 1$  and significantly earlier for  $k = 2$ . This feature is also seen in Figure 10, which shows the temporal index  $\alpha \equiv -d \log F_\nu / d \log t_{\text{obs}}$  as a function of  $t_{\text{obs}}$ , where the earliest value of  $\alpha$  is larger than expected analytically for a spherical flow (or for a jet viewed along its axis, before the jet break time). Figure 9 clearly illustrates the reason for this behavior. It basically occurs at the point where the dominant contribution to the observed flux switches from the Blandford-McKee wedge with  $20 \leq \Gamma_{\text{sh}}(t) \leq 200$  to the simulation, which corresponds to later lab-frame times. As pointed out and calculated in De Colle et al. 2011 for the spherical case, the relaxation of the mapping of the analytic Blandford-McKee self-similar solution to the numerical solution and the finite resolution of the simulation result in a dip in the Lorentz factor that is gradually recovered as the shocked region becomes wider and thus better resolved with time. This produces a dip in the lightcurve, that gradually goes away as the resolution of the simulation is increased (see Figures 5, 6, 7 of De Colle et al. 2011). This feature is a numerical artifact of the finite resolution of the simulation. Similar errors in the light curves were also present in previous simulations for the  $k = 0$  case (e.g., our light curve in the case  $k = 0$  is nearly identical to that by Zhang & MacFadyen 2009 as depicted in De Colle et al. 2011).

A smaller contribution (although not easily quantifiable) to the pan-chromatic dip in the lightcurve is due to the particular initial conditions chosen in this paper. In fact, as the jet initially has sharp edges (a step function in the  $\theta$ -direction), once the simulation starts there is a relaxation period occurring in the lateral direction on a dynamical timescale (as a rarefaction wave propagates from the edge of the jet towards its center). This lateral transient phase triggered by the sharp-edged jet is also imprinted in the lightcurves around the time of the dip or flattening, and, contrary to the limited resolution artifacts, is not expected to go away as the resolution is increased. This artifact might be less pronounced for initial conditions that are smoother in the lateral direction (e.g., a jet with an initial Gaussian angular profile).

Apart from this early-time, artificial feature, there is the ex-

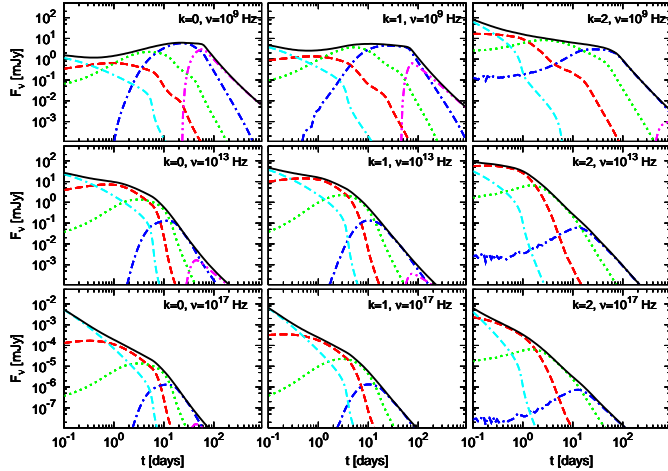


FIG. 9.— Afterglow lightcurves emanating at different Lorentz factors. The red, green, blue, purple (dashed, dotted, dashed-dotted, dashed-dotted-dotted) lines are the contributions to the total light curve (in black) computed by using the outputs of the simulations at the lab frame times where  $\Gamma_{\text{sh}}(t)/\sqrt{2}$  (as given by the Blandford-McKee solution) ranges between 10 and 20, 5 and 10, 2 and 5, 1 and 2 respectively. The cyan dashed-dotted lines are the contributions from a Blandford-McKee wedge with  $20 \leq \Gamma_{\text{sh}}(t)/\sqrt{2} \leq 200$ . The light curves include electron cooling.

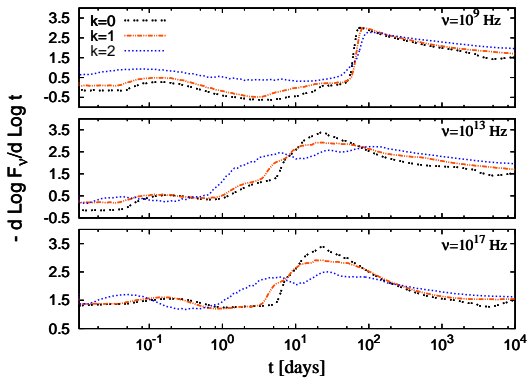


FIG. 10.— “Shape of the jet break”, i.e. temporal decay of light curve, given by  $\alpha \equiv -d \log F_\nu / d \log t_{\text{obs}}$ , as a function of  $t_{\text{obs}}$ , at three different frequencies, including electron cooling.

pected pan-chromatic jet break that is present at all frequencies above  $\nu_m$  and is observed between a day for  $k = 2$  to several days for  $k = 0$ . These jet break features are discussed in more detail below.

#### 4.1. Jet Breaks

Figure 10 plots the shape of the jet break, i.e. the temporal decay index of the light curve,  $\alpha \equiv -d \log F_\nu / d \log t_{\text{obs}}$ , as a function of observer time,  $t_{\text{obs}}$ , for different observed frequencies and  $k$ -values. We shall first discuss the pan-chromatic jet break features at frequencies that are above the typical synchrotron frequency at the time of the jet break,  $\nu > \nu_m(t_{\text{obs},j})$ . As shown in Figure 10, the temporal decay of the light curve becomes smoother for increasing  $k$ , as derived in analytic models (Kumar & Panaitescu 2000, hereafter KP00). However, the steepening in the lightcurve occurs within a significantly smaller observed time period than that predicted by analytic models. Most of the increase in  $\alpha$  occurs over a factor of  $\approx 3 - 5$  in time for  $k = 0$  (compared to a decade in time predicted in KP00) and within about one decade in time for  $k = 2$  (compared to four decades in time predicted in KP00).

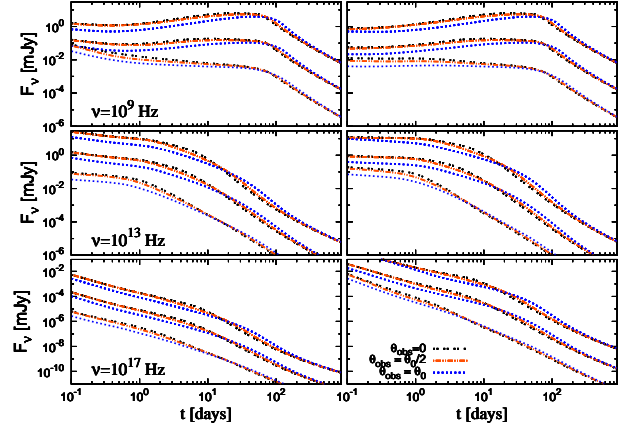


FIG. 11.— Light curves corresponding to  $\nu = 10^9, 10^{13}, 10^{17}$  Hz (from top to bottom panels) for different viewing angles  $\theta_{\text{obs}}$  (normalized to the jet initial half-opening angle  $\theta_0$ ) and external density profiles ( $k = 0, 1, 2$ ), with (left panels) and without (right panels) electron cooling. The lightcurves corresponding to  $k = 0$  and  $k = 1$  are multiplied by 1000 and 30, respectively. The lightcurves include the contribution from a mapped Blandford-McKee solution (with  $20 \leq \Gamma \leq 200$ ) and the numerical simulation (with  $1 \leq \Gamma \leq 20$ ).

The relatively sharper jet break (compared to analytic expectations) in a stratified medium may permit the detection of such a jet break. We also note that there is an “overshoot” in the value of the temporal decay index  $\alpha$  just after the jet break, which is more prominent for lower  $k$ -values (in agreement with previous results; Granot 2007). After this overshoot  $\alpha$  gradually decreases, and there is also a noticeable curvature in the lightcurve as the flow becomes mildly relativistic and eventually approaches the Newtonian regime. The effects of electron cooling on the shape of the jet break appear to be rather modest in most cases.

At low frequencies,  $\nu < \nu_m(t_{\text{obs},j})$  (see Figure 10, upper panel), there is only a very modest increase in  $\alpha$  near  $t_{\text{obs},j}$ . On the other hand, when the break frequency  $\nu_m$  sweeps past the observed frequency  $\nu$ , a very sharp break is seen (i.e. increase in  $\alpha$ ). Both features are present for  $k = 0$ , and we find here that they also persist for higher  $k$ -values. Moreover, we also find that this break is sharper for smaller  $k$ -values. This is because the corresponding spectral break (at  $\nu_m$ ) is very sharp for our simple broken power-law spectral emissivity model, and is not degraded by the contribution from multiple parts of the jet at smaller  $k$ -values (in addition  $\nu_m$  decreases somewhat faster in time at  $t_{\text{obs}} > t_{\text{obs},j}$  for smaller  $k$ -values). We expect that a more realistic synchrotron emissivity function would result in a significantly smoother spectral break at  $\nu_m$ , which would in turn lead to a correspondingly smoother temporal break.

Figure 11 shows afterglow lightcurves for three different observed frequencies ( $\nu = 10^9, 10^{13}, 10^{17}$  Hz; top to bottom panels), external density profiles ( $k = 0, 1, 2$ ), and viewing angles ( $\theta_{\text{obs}}/\theta_0 = 0, 0.5, 1$ ), both with and without electron cooling (left and right panels, respectively). Figure 12 shows the corresponding values of the temporal decay index  $\alpha$  for  $\nu = 10^{17}$  Hz. Figures 11 and 12 show that the shape of the jet break is predominantly regulated by the change in viewing angle (within the initial jet aperture,  $0 \leq \theta_{\text{obs}}/\theta_0 \leq 1$ ) rather than by the external density power-law index  $k$  (in the range  $0 \leq k \leq 2$ ). For  $\theta_{\text{obs}} = 0$  most of the steepening occurs within a factor of  $\sim 2 - 4$  in time for  $k = 0, 1, 2$  while for  $\theta_{\text{obs}}/\theta_0 \sim 0.5 - 1$  it takes  $\sim 1 - 2$  decades for  $k = 0, 1, 2$ . This is particularly interesting because previous analytical work



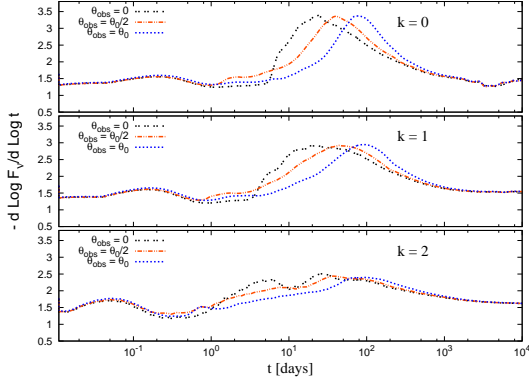


FIG. 12.— “Shape of the jet break”, i.e. temporal decay of light curve, given by  $\alpha \equiv -d \log F_v / d \log t_{\text{obs}}$  as a function of  $t_{\text{obs}}$ , including electron cooling, at  $\nu = 10^{17}$  Hz  $> \nu_m$ .

have argued that the effect of varying  $k$  should be significantly larger. It can also be seen in Figure 12 that the jet induced steepening starts earlier and ends later for larger  $k$ -values and for larger viewing angles (or  $\theta_{\text{obs}}/\theta_0$  values). Also, the overshoot in the value of  $\alpha$  is larger for greater  $k$ -values or  $\theta_{\text{obs}}/\theta_0$  values. The jet break time is also observed to occur later for larger viewing angles at all values of  $k$ , and varies over a factor of  $\sim 3 - 5$  for  $0 \leq \theta_{\text{obs}}/\theta_0 \leq 1$ .

The change in the jet break duration with  $k$  is due to the slower evolution of  $\Gamma$  with  $t$  or  $R \approx ct$  as well as  $t_{\text{obs}}$  for larger  $k$ -values ( $\Gamma \propto R^{(k-3)/2} \propto t_{\text{obs}}^{(k-3)/(8-2k)}$  for a spherical flow). For  $\theta_{\text{obs}} = 0$  and  $\nu > \nu_m(t_{\text{obs},j})$ , the jet break duration roughly corresponds to the time it takes the beaming cone to grow past the limb-brightened outer part of the image. If crudely neglecting lateral spreading (since most of the emission near the jet break time is from within the initial jet aperture, Piran & Granot 2001), so that the dominant effect is the “missing emission” from outside the edges of the jet (Granot 2007), and requiring that the beaming cone (of angle  $\theta \lesssim 1/\Gamma$  around the line of sight) grows by a factor of  $f_k$ , then this would correspond to a factor of  $\sim f_k^{(8-2k)/(3-k)}$  in observed time. However, the resulting image is more limb-brightened for smaller  $k$ -values (Granot & Loeb 2001; Granot 2008), and, as a result, one might estimate  $f_{k=0} \sim 1.3$ ,  $f_{k=1} \sim 1.4$ ,  $f_{k=2} \sim 1.5$ , which would result in factors of  $\sim 2$ ,  $\sim 3$  and  $\sim 5$  in the observed time, in rough agreement with our numerical results.

As to the effect of the viewing angle for a fixed value of  $k$ , the addition to the duration of the jet break relative to  $\theta_{\text{obs}} = 0$  corresponds approximately to the time it takes the edge of the beaming cone ( $1/\Gamma$ ) to grow from  $\theta_0$  to  $\theta_0 + \theta_{\text{obs}}$ . Thus, for  $\theta_{\text{obs}} = \theta_0$  this corresponds to a factor of 2 decrease in  $\Gamma$ , or a factor of  $\sim 2^{(8-2k)/(3-k)}$  increase in the observed time (i.e. factors of  $\sim 6$ ,  $\sim 8$  and  $\sim 16$  for  $k = 0, 1$ , and  $2$ , respectively). This is in rough agreement with our numerical results. According to this simple estimate, the duration of the jet break for  $\theta_{\text{obs}} = \theta_0$  and  $k = 2$  should be a factor of  $\sim (2f_2)^{(8-2k)/(3-k)} \sim 3^4 \sim 81$  in time, or almost two decades in observed time, also in agreement with the results of our calculations.

#### 4.2. Radio Calorimetry

Figure 13 shows the radio lightcurves (at  $\nu = 10^9$  Hz) for  $k = 0, 1, 2$  from our two-dimensional numerical simulations of a double-sided jet, as well as for a spherical blast wave with the same true energy and a double-sided cone of fixed half-opening angle  $\theta_0$  calculated from a spherical blast wave

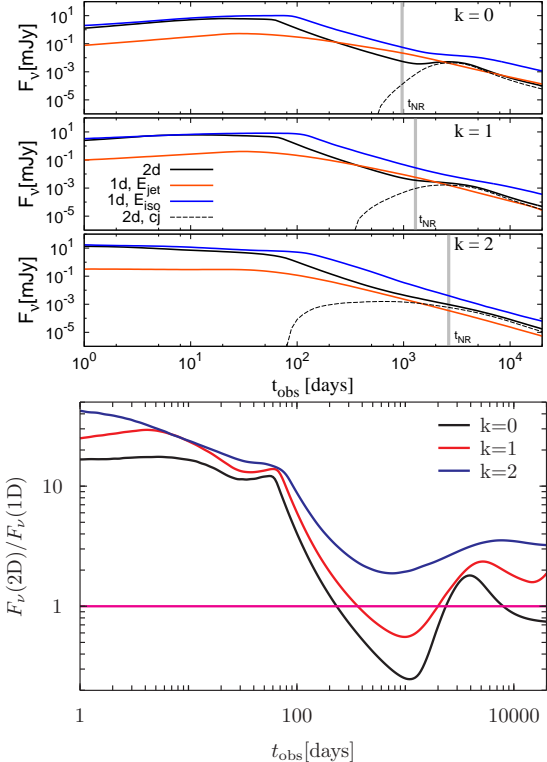


FIG. 13.— Light curve at  $\nu = 10^9$  Hz for the 2d runs ( $k = 0, 1, 2$ ), for spherical 1d simulations with  $E = E_{\text{jet}}$  and for a cone with half-opening angle  $\theta_0$  computed from spherical 1d simulations with  $E = E_{\text{iso}}$ . The contribution due to the counterjet is included in the lightcurves, and it is also shown (dotted curves) for the 2d simulations.

with the same isotropic equivalent energy (where  $\theta_{\text{obs}} = 0$  in the two non-spherical cases). As expected, the lightcurves computed from a spherical blast wave with the same isotropic energy and from the two dimensional simulation match reasonably well at early times. For the double-sided jet, it can be seen that the bump in the lightcurve near the non-relativistic transition time, caused because the counter-jet (whose contribution is indicated by a *dashed line*) becomes visible, is much more prominent for low values of  $k$  and becomes significantly more modest for larger  $k$ -values. This effect is caused by the more gradual deceleration of the jet for larger  $k$ -values (as the same mass of external medium is swept-up over a larger range in radii), which causes the counter-jet to become visible more gradually, resulting in a wider, lower peak flux bump. In particular, for  $k = 2$  it amounts to a fairly modest and rather slow flattening of the lightcurve, which might be hard to discern observationally. This might, however, not help explain the lack of a clear flattening or rebrightening in the late radio afterglow of GRB 030329 (e.g., Pihlström et al. 2007), since in that case detailed afterglow modeling favors a uniform external density ( $k = 0$ ; van der Horst et al. 2008).

Comparison of the radio flux at late times from a double-sided jet and from a spherical blast wave with the same true energy near the non-relativistic transition time shows that they are broadly similar but may differ by up to a factor  $\lesssim 3$ . For  $k = 0$  and  $k = 1$  the spherical analog slightly over-predicts the flux before the contribution from the counter jet becomes important, and under-predicts the flux once the emission from the counter-jet becomes dominant, while for  $k = 2$  the spherical analogue consistently under-predicts the flux, by up to a factor of  $\lesssim 3$ . This may result in a small but not negli-

ble error in the estimation of the true energy in the double-side jet assuming a spherical sub-relativistic flow, as is commonly done in radio calorimetry studies (Kaneko et al. 2007; Berger et al. 2003; Frail et al. 2005; Gorosabel et al. 2006; Kulkarni et al. 1998), both over- or under- estimating the real true energy depending on the stratification of the ambient medium and the observer time).

## 5. DISCUSSION

We have studied the dynamics of GRB jets during the afterglow stage as they propagate into different external density profiles,  $\rho_{\text{ext}} = Ar^{-k}$  for  $k = 0, 1, 2$ , using detailed hydrodynamic simulations. Our main results, which relate both to the dynamics and the resulting afterglow emission, can be summarized as follows.

For the same initial half-opening angle  $\theta_0$  and external density at the jet break radius (which is defined by  $\Gamma_1(R_j) = \theta_0^{-1}$ ), the lateral spreading is initially (at  $R < R_j$ ) larger for higher  $k$ -values. This arises because at the same radius (or lab frame time) the typical Lorentz factor is lower. At late times ( $R > R_j$ ) the situation is reversed, and the effective jet opening angle at a fixed lab frame time is similar for different  $k$ -values. Since for higher  $k$ -values a larger range of radii is required in order to sweep-up the same amount of mass, the whole evolution extends over a much wider range of radii and times. As a result, the jet break in the afterglow lightcurve is smoother and more gradual, the non-relativistic transition occurs later, and the flow approaches spherical symmetry more slowly and over longer timescales. The effective jet opening angle is observed to increase only logarithmically with lab frame time (or radius) once the jet comes into lateral causal contact (i.e. when  $\Gamma$  drops below  $\theta_0^{-1}$ ).

As long as the jet is relativistic, most of the energy and emission are concentrated near the head of the jet while the slower material at the edges carries relatively little energy (even though it carries a substantial fraction of the swept-up rest-mass). This holds true for all  $k$ -values. Once the jet becomes sub-relativistic, at  $t > t_{\text{NR}}(E_{\text{iso}})$ , it quickly spreads laterally and swiftly starts to approach spherical symmetry. The energy weighted mean value of  $u(t)$  is observed to be of order unity at  $t/t_j \sim 2$  rather than at  $t \sim t_{\text{NR}}(E_{\text{iso}})$ , as one might naively expect. We find that there is little  $k$ -dependence on the temporal evolution of  $\theta_j$ , so that irrespective of the external medium radial profile, all of the expanding jets approach spherical symmetry at similar times ( $\sim 1 - 1.5$  decades after

$t_j$ ). A similar conclusion can be reached from the calculated evolution of  $R_{\parallel}/R_{\perp}$  with  $t/t_j$ .

We find that contrary to the expectations of analytic models, the shape of the jet break is affected more by the viewing angle (within the initial jet aperture,  $0 \leq \theta_{\text{obs}}/\theta_0 \leq 1$ ) than by the steepness of the external density profile (for  $0 \leq k \leq 2$ ). Larger viewing angles result in a later jet break time and a smoother jet break, extending over a wide range in time, and with a larger overshoot (initial increase in the temporal decay index  $\alpha$  beyond its asymptotic value), which is observed to be more prominent for lower  $k$ -values. Larger  $k$ -values result in more gradual jet breaks, but the sharpness of the jet break is affected even slightly more by the viewing angle as argued above. The counter-jet becomes visible around  $t_{\text{NR}}$ , and for  $k = 0$  this results in a clear bump in the light curve. However, for larger  $k$ -values the jet deceleration is more gradual and as a result a wider and lower bump is produced, which becomes hard to detect for  $k = 2$ , where it reduces to a mild flattening in the light curve. This may explain the lack of a clear counter-jet signature in some late time radio afterglow light curves of long duration GRBs although the dynamical complexity of their surrounding circumburst medium seriously limits the validity of a non-evolving power-law density profile (e.g. Ramirez-Ruiz et al. 2005).

Finally, we showed that the use of a spherical blast wave for estimating the total energy of the jet, as is commonly done in radio calorimetry studies, results in an error in the estimation of the true energy content of the jet that depends on the stratification of the ambient medium (being on average larger for  $k = 2$ ). In particular, in the case  $k = 2$ , the spherical blast wave analogy consistently overestimates the true energy, while for the cases  $k = 0$  and  $k = 1$  it produces an over- or an under-estimate depending on whether the estimation of the jet energy is done before or after the non-relativistic transition time.

We are grateful to A. MacFadyen, W. Lee and W. Zhang for discussions. This research was supported by the David and Lucille Packard Foundation (ERR and FDC), the NSF (ERR) (AST- 0847563), the ERC advanced research grant ‘‘GRBs’’ and a DGAPA postdoctoral grant from UNAM (DLC). We acknowledge the support by S. Dong for administrating the Pleiades supercomputer, maintained and operated by the University of California at Santa Cruz, where the numerical calculations in this paper were performed.

## REFERENCES

- Berger, E., Kulkarni, S. R., Pooley, G., et al. 2003, *Nature*, 426, 154  
 Blandford, R. D., & McKee, C. F. 1976, *ApJ*, 19, 1130  
 Chevalier, R. A., & Li, Z.-Y. 2000, *ApJ*, 536, 195  
 Chevalier, R. A., Li, Z.-Y., & Fransson, C. 2004, *ApJ*, 606, 369  
 De Colle, F., Granot, J., & Lopez-Cámara, D., Ramirez-Ruiz, E., *ApJ*, submitted  
 Frail, D. A., Soderberg, A. M., Kulkarni, S. R., et al. 2005, *ApJ*, 619, 994  
 Gehrels, N., Ramirez-Ruiz, E., & Fox, D. B. 2009, *ARA&A*, 47, 567  
 Gorosabel, J., Castro-Tirado, A. J., Ramirez-Ruiz, E., et al. 2006, *ApJ*, 641, L13  
 Granot, J. 2005, *ApJ*, 631, 1022  
 Granot, J. 2007, *Rev. Mex. A&A*, 27, 140  
 Granot, J. 2008, *MNRAS*, 390, L46  
 Granot, J., & Loeb, A. 2001, *ApJ*, 551, L63  
 Granot, J., Miller, M., Piran, T., Suen, W. M., & Hughes, P. A. 2001, *Gamma-ray Bursts in the Afterglow Era*, 312  
 Granot, J., & Piran, T. 2011, submitted to *MNRAS* (arXiv:1109.6468)  
 Granot, J., Piran, T., & Sari, R. 1999, *ApJ*, 513, 679  
 Granot, J., Ramirez-Ruiz, E. & Loeb, A. 2005, *ApJ*, 618, 413  
 Granot, J., & Sari, R. 2002, *ApJ*, 568, 820  
 Grazinov, A. 2007, preprint, arXiv:0704.3081  
 Kaneko, Y., Ramirez-Ruiz, E., Granot, J., et al. 2007, *ApJ*, 654, 385  
 Kulkarni, S. R., Frail, D. A., Wieringa, M. H., et al. 1998, *Nature*, 395, 663  
 Kumar, P., & Panaitescu, A. 2000, *ApJ*, 541, L9  
 Meliani, Z., & Keppens, R. 2010, *A&A*, 520, L3  
 Meszaros, P., Rees, M. J., & Wijers, R. A. M. J. 1998, *ApJ*, 499, 301  
 Mimica, P., & Giannios, D. 2011, *MNRAS*, 418, 583  
 Panaitescu, A., & Kumar, P. 2000, *ApJ*, 543, 66  
 Pihlström, Y. M., Taylor, G. B., Granot, J., & Doeleman, S. 2007, *ApJ*, 664, 411  
 Piran, T., & Granot, J. 2001, *Gamma-ray Bursts in the Afterglow Era*, 300  
 Ramirez-Ruiz, E., & MacFadyen, A. I. 2010, *ApJ*, 716, 1028  
 Ramirez-Ruiz, E., Dray, L. M., Madau, P., & Tout, C. A. 2001, *MNRAS*, 327, 829  
 Ramirez-Ruiz, E., García-Segura, G., Salmonson, J. D., & Pérez-Rendón, B. 2005, *ApJ*, 631, 435  
 Rhoads, J. E. 1997, *ApJ*, 487, L1  
 Rhoads, J. E. 1999, *ApJ*, 525, 737

- Ryu, D., Chattopadhyay, I., & Choi, E. 2006, ApJS, 166, 410
- Sari, R., Piran, T., & Halpern, J. 1999, ApJ, 519, L17
- Schneider, V., Katscher, U., Rischke, D. H., Waldhauser, B., Maruhn, J. A., & Munz, C.-D. 1993, Journal of Computational Physics, 105, 92
- Synge, J. L. 1971, Talking about relativity, by Synge, J. L. Amsterdam (Netherlands): North-Holland Publishing Company 193 p.
- van der Horst, A. J., et al. 2008, A&A, 480, 35
- van Eerten, H. J., et al. 2010, MNRAS, 403, 300
- van Eerten, H. J., & MacFadyen, A. I. 2011, preprint (arXiv:1105.2485)
- van Eerten, H. J., van der Horst, A. J., & MacFadyen, A. I. 2011, arXiv:1110.5089
- van Marle, A. J., Langer, N., Yoon, S.-C., & García-Segura, G. 2008, A&A, 478, 769
- Wu, X. F., Dai, Z. G., Huang, Y. F., & Lu, T. 2005, ApJ, 619, 968
- Wygoda, N., Waxman, E., & Fril, D. A. 2011, preprint (arXiv:1102.5618)
- Zhang, W., & MacFadyen, A. I. 2009, 698, 1261