

A deep survey of brown dwarfs in Orion with Gemini

P.W.Lucas¹, P.F.Roche² and M.Tamura³

¹*Dept. of Physical Sciences, University of Hertfordshire, College Lane, Hatfield AL10 9AB.
email: pwl@star.herts.ac.uk*

²*Astrophysics, Physics Dept., University of Oxford, 1 Keble Road, Oxford OX1 3RH.*

³*National Astronomical Observatory of Japan, 2-21-1, Osawa, Mitaka, Tokyo 181-8588, Japan*

15 August 2007

ABSTRACT

We report the results of a deep near infrared (JHK) survey of the outer parts of the Trapezium Cluster with Gemini South/Flamingos. 396 sources were detected in a 26 arcmin² area, including 138 brown dwarf candidates, defined as $M < 0.075M_{\odot}$ for an assumed age of 1 Myr. Only 33 of the brown dwarf candidates are planetary mass candidates (PMCs) with estimated masses in the range $0.003 < M < 0.012M_{\odot}$. In an extinction limited sample ($A_V < 5$) complete to approximately $0.005M_{\odot}$ ($5 M_{Jup}$) the mass function appears to drop by a factor of 2 at the deuterium burning threshold, i.e. at planetary masses. After allowing for background contamination it is likely that planetary mass objects at 3–13 M_{Jup} number $< 10\%$ of the cluster population, with an upper limit of 13%. Analysis of the spatial distribution of stars and brown dwarf candidates suggests that brown dwarfs and very low mass stars ($M < 0.1M_{\odot}$) are less likely than more massive stars to have wide (> 150 AU) binary companions. This result has modest statistical significance (96%) in our data but is supported at 93% confidence by analysis of an completely independent sample taken from the Subaru data of Kaifu et al.(2000). There is a statistically very significant excess of both stars and brown dwarfs with small separations from each other (< 6 arcsec or 2600 AU). This appears to be due to the presence of small N subgroups, which are likely to be dynamically unstable in the long term. Hence these results are consistent with the ‘ejected stellar embryo’ hypothesis for brown dwarf formation (Reipurth & Clarke 2001). We also report the discovery of two new bipolar nebulae, which are interpreted as Class I protostars.

Key words: stars: low mass, brown dwarfs; stars: formation; (stars:) circumstellar matter

1 INTRODUCTION

In recent years several deep near infrared surveys have begun to characterise the population of brown dwarfs in the Trapezium Cluster (Lucas & Roche 2000, hereafter LR00; Hillenbrand & Carpenter 2000; Luhman et al. 2000; Kaifu et al. 2000; Muench et al. 2002; Lada et al. 2004). The first three of these surveys were sensitive enough to detect a small population of objects whose masses apparently lie below the deuterium burning threshold at $M \lesssim 0.012M_{\odot}$ ($13 M_{Jup}$), which we call planetary mass candidates (PMCs). (Masses were estimated from source luminosity by comparison with pre-main sequence isochrones, under the assumption of a canonical age of 1 Myr). LR00 argued that the luminosity function declines below the deuterium threshold but the survey was not sensitive enough to establish this conclusively.

At least 3 deeper infrared surveys with 8-m class telescopes have now been undertaken to investigate the luminosity function and the initial mass function to below the

theoretical lower mass limit for star formation at around $M = 6M_{Jup}$. This limit is based on the calculation that contracting cloud cores with lower mass do not exceed the thermal Jeans mass at the point when they become optically thick to their own far infrared cooling radiation (Silk 1977; Low & Lynden Bell 1973; Rees 1976). In the spherical case it is supported by recent more detailed calculations (Masunaga & Inutsuka 1999) but Boyd & Whitworth (2005) consider fragmentation of a shock compressed layer and suggest that the mass limit may be below $3 M_{Jup}$. The 3 new independent surveys complement each other by using different combinations of survey depth and area. They will be further complemented by a very deep optical survey currently in progress with the Hubble Space Telescope (Robberto et al. 2004). The largest ground based survey used the VLT (oral presentation by M.McCaughrean at IAU Symposium 211 ‘Brown Dwarfs’) and covers a region of some 50 arcmin² centred on the core of the cluster, with integration times of 15 minutes

in each of the J, H and K near infrared filters. Our survey with Gemini South, which we report here, covers an area of ~ 26 arcmin² in the outer parts of the cluster, where the nebosity is fainter and less structured. The longer integration times of 1 to 2 hours (see section 2) and the fainter nebosity increase the survey sensitivity; the fainter nebosity also makes spectroscopic follow up of PMCs easier. The drawbacks are the introduction of some possible biases into the survey, eg. due to dynamical mass segregation between the core and the outer cluster, and a smaller sample for statistical analysis. The third survey, which is still in progress (Aspin & Liu private com.), used Gemini North to image a much smaller area of ~ 4 arcmin² at greater depth, using near infrared filters sensitive to methane absorption. This survey aims to pick up T dwarfs with masses of $\sim 1 M_{Jup}$. Traditional star formation theory suggests that such objects should not exist, as noted above. However, they may exist if formed in a different manner, eg. while experiencing strong photoevaporation from the O-type stars in the cluster centre (see investigations by Whitworth & Zinnecker 2004; Kroupa & Bouvier 2003) or if they formed in a solar system as planets and were ejected following gravitational interaction with another planet or a passing star.

In this survey we detect many new PMCs, including a candidate T dwarf. The observations and the photometric results are described in sections 2 and 3. We also explore the implications for the IMF. Section 3 also contains a comparative spatial and binarity analysis for stars and brown dwarfs. In section 4 we report the discovery of two bipolar nebulae and discuss some of the trails and filaments of nebosity which are observed in the survey area. Our conclusions are given in section 5.

2 OBSERVATIONS

Near infrared imaging in the J (1.25 μm), H (1.65 μm) and K (2.2 μm) bands was carried out at 2 epochs with the Flamingos I camera (Elston 1998) on the Gemini South telescope at Cerro Pachon, Chile. All observations were made in queue mode by observatory staff. The first dataset was taken on the nights of 7, 10, 12, 15, 16 and 17 October 2001, at which time the Flamingos camera employed an engineering grade 2048² HAWAII2 HgCdTe detector array. One field was observed, the camera pixel scale of 0.076 arcsec yielding a field of view of 156 arcsec. The second dataset, comprising 2 Flamingos fields, was taken in 2002 with a science grade array of the same type on the nights of 29, 30 and 31 October, and 1, 2, 4 and 12 November. A 2 \times 2 jitter pattern with ~ 30 arcsec offsets was used for all 3 fields. The location of the 3 contiguous fields, denoted Field 1, Field 2 and Field 3, is shown in Figure 1, superimposed on a JCMT/SCUBA map of 850 μm emission from cold dust in the survey region (data courtesy D.Johnstone, private comm., see Johnstone & Bally 1999). The location of a less sensitive Gemini North/NIRI field, which we describe briefly in Section 3.2, is also indicated. Total exposure times for each Flamingos field were approximately 1 hour at K band, 1 hour at H band, and 2 hours at J band. Individual integration times, seeing data, and exact exposure times after discarding poor data are given in Table 1. A 4th Flamingos field, offset by 30 arcminutes east, was requested in order to investigate the luminosity function

of contaminating background stars but these data were not taken due to constraints on availability of the instrument.

These fields were selected to avoid the bulk of the brightest nebosity in the Trapezium cluster in order to improve sensitivity and permit follow up spectroscopy by reducing the surface brightness gradients in the background. The extinction through the backdrop of the OMC-1 cloud varies greatly across survey area, as indicated by the 850 μm emission. Not all regions of high optical extinction are prominent in Figure 1: the ridge of high extinction seen by Hillenbrand (1997), running several arcminutes southeast from (05h 16m, -5° 19m), appears merely as a narrow tongue extending from the main cloud. By contrast, the Orion Bar (located 3 arcminutes southeast of θ_1 Ori C) appears prominent in Figure 1, suggesting it is a structural feature as well as part of the ionisation front. Bright nebosity in the bar reduced sensitivity in the northern half of Field 1. The K band is most sensitive to M and L type brown dwarfs in Orion, which have red colours due to both their cool photospheres and reddening within the OMC-1 molecular cloud in many cases. The less dense medium in front of the OMC-1 cloud, in which many of the cluster members lie, produces much less extinction (O'Dell & Yusef-Zadeh 2000). J and H band data are necessary to determine the extinction toward each source, since a significant fraction of the K band flux is produced by hot circumstellar matter in many cases (Lada et al. 2004; Muench et al. 2001).

No photometric standards were observed except for the 1 or 2 per night taken for all Gemini programmes. Photometric zero points were calculated using the large number of published surveys of the region instead (see below). No detailed information on the photometric quality of the observing conditions was provided but the stability of the background count level in the individual integrations suggests that conditions were either photometric or close to it during all the observations. All the Flamingos data were taken at low airmass, which aids photometric stability. However, data taken in different filters for each field were generally taken on different nights, so it is likely that T Tauri-like source variability will have affected the measured colours in a significant fraction of sources, mostly at the 0.1 to 0.2 mag level (see Section 3).

2.1 Data Reduction

The data were Dark subtracted and flat fielded using the IRAF software package and areas of bad data were removed from each data frame with a mask. Approximately 92% of the engineering grade array provided useable data. In both the engineering and science grade arrays the first few dozen rows of each of the four 1024² array readout quadrants showed elevated counts due to amplifier glow. The amplifier glow was time variable, so a Dark frame with a similar amount of glow was assigned to each image for best subtraction. This minimised the amount of data that had to be masked out.

The K band data from the engineering grade array showed a large spatially structured component of the background due to constructive interference by OH emission lines in the earth's atmosphere. This appeared as a bright ring in the middle of each image, surrounded by much fainter concentric rings in a Fabry-Perot interference pattern. These

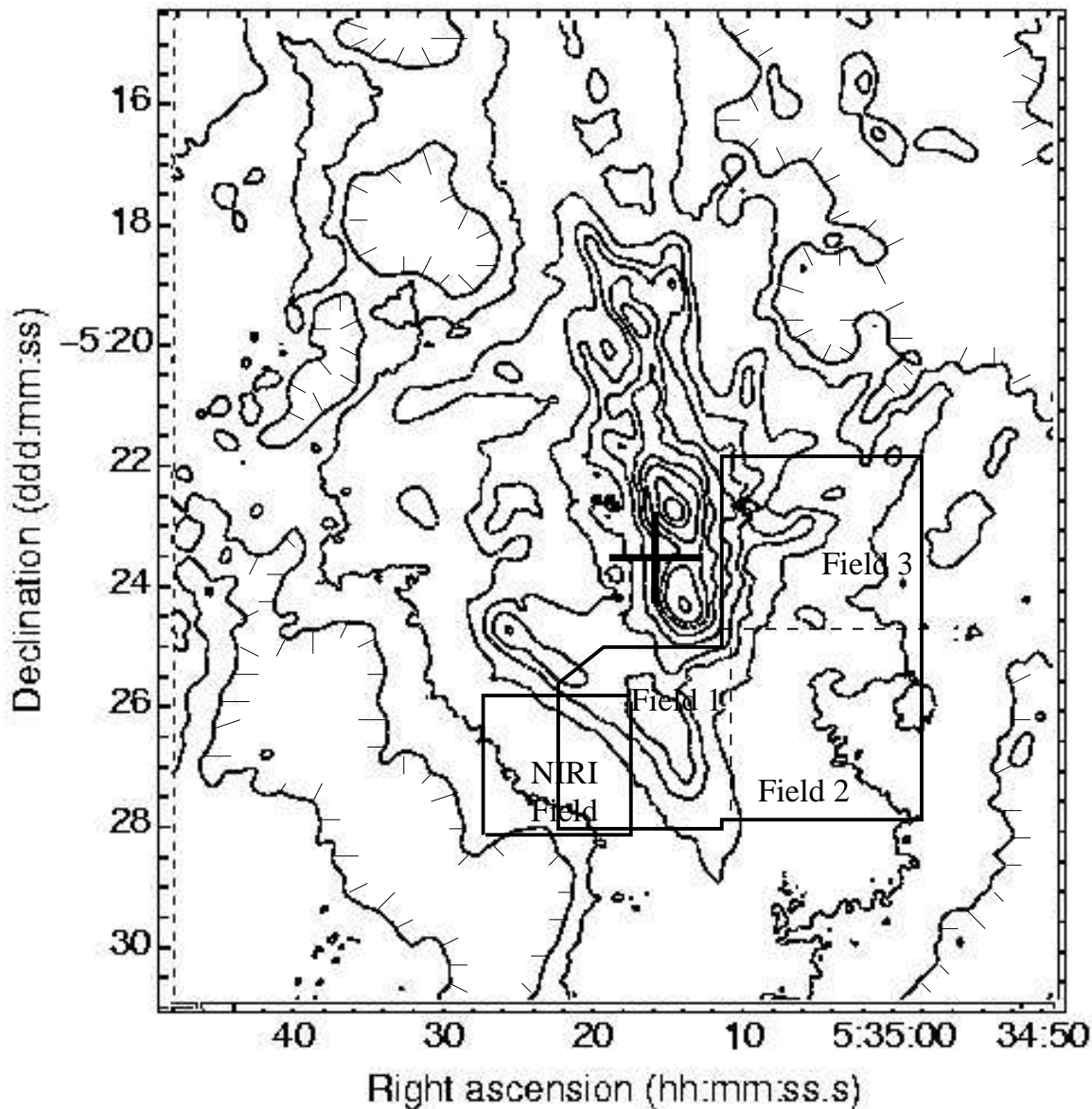


Figure 1. Contour plot of the $850\ \mu\text{m}$ emission from cold dust in the OMC-1 region (see Johnstone & Bally 1999.) The survey region is enclosed by solid lines and the locations of the 3 Flamingos fields are indicated (J2000.0 coordinates). Strong dust emission is expected to correlate with high extinction through the cloud, indicating regions where background stars with low reddening are less likely to be seen. The location of θ_1 Ori C at the cluster centre is indicated by a large + sign. The zero flux contour is marked with short lines. Contour levels (in data numbers) are 0, 0.2, 1, 2, 3, 5, 8, 12, 20, 50 and 100. The 0.2 contour level corresponds to visual extinction on the order of $A_V = 5$. Areas of negative flux are influenced by imperfect beam switching.

fainter rings were visible only after flat fielding, if the structure were not first removed. The interference pattern was sufficiently stable to permit a straightforward subtraction by using data taken for photometric standards to make a template interference pattern (the Orion data could not be used because of the nebulosity). Where necessary the template was scaled by a factor close to unity to improve the quality of the subtraction. After subtraction of this feature the data were flatfielded with data taken in bright twilight, in which no sign of OH interference was apparent.

The K band data from the science grade array also

showed a large spatially structured component of the background, but due to a ghost image of the telescope secondary mirror and the mirror supporting spider. (This may also have been present at a lower level in the data from the engineering grade array). The unwanted signal was subtracted with a template in the same way as the OH airglow pattern, before flatfielding with twilight flats. The J and H band data from both arrays showed only very low levels of the OH interference pattern, which was undetectable amongst the nebulosity in most of observed area of Orion. This was fortuitous since we did not have a suitable data to make a template

for subtraction. Since the twilight flats did not contain a detectable OH signal the small amount of OH interference structure remaining in the final coadded data had a much smaller effect on the photometry of faint sources than the pervasive nebulosity.

The corners of the arrays often showed an additional background glow, in the K band only, associated with the telescope guide star probe. This varied with the jitter position and affected different corners in the two epochs. Low level glow had little impact on the photometry since the flux in a photometric aperture was easily subtracted with a concentric annulus. However some small portions of the data had to be removed where the glow was very strong, leading to gaps in the north west corners of the data mosaics for Fields 2 and 3 at K band.

The data were coadded into a mosaic for each field with the Starlink package CCDPACK. Point sources were detected by eye, since automated detection algorithms have difficulty in nebulous regions. The data contained a large number of residual images from sources saturated at a previous jitter position as well as numerous ghost images. Some ghost images were point source-like but could be identified by their consistent locations relative to the brightest stars in each field. Residual images also lay at predictable positions defined by the jitter pattern, and usually had a resolved disc-like appearance, confirmed by a very different radial profile from a point source with the IRAF utility IMEXAM.

2.2 Photometry

Aperture photometry was then conducted with the APHOT package in IRAF. For the brighter sources a photometric aperture with a 13 pixel radius was used, except in Field 3 where a 9 pixel aperture was used for the K band data because of better seeing conditions. For these bright sources an annulus at a radius of 45 to 50 pixels was employed for background subtraction, using the median of the background counts. For all fainter sources (including all those faint enough to be brown dwarf candidates) smaller photometric apertures were selected to optimise the signal to noise. Smaller annuli were used for background subtraction, in order to minimise the effect of the nebulosity gradients. The small sky annuli for faint sources often included a measurable fraction of the point source flux so this was carefully calibrated using several bright stars in each field, as were the aperture corrections. All sources were inspected individually to ensure good photometry and detect any close binaries. The NSTAR routine in IRAF was used for photometry of close binaries. In cases where one or more binary components were saturated the relative fluxes of the two were estimated using the skirts of the image profiles, with the total flux being taken from previously published data.

The source of photometric zero point for each field is indicated in Table 1. For each field we attempted to find several bright but unsaturated sources with fluxes published in another survey. It is necessary to use several sources because of the likelihood of variability in a significant fraction of objects. It was usually found that most sources in a sample produced a similar zero point (within 0.1 mag) but a minority were outliers, probably due to variability, and were therefore discarded. The final formal uncertainty ($\sigma_{n-1}/n^{1/2}$) in the zero points for each filter in each field

was less than 0.03 mag in each case, though the comparison of different surveys suggests that the true uncertainty may be larger (see below). No linearity data for the Flamingos detector arrays was supplied by the observatory, so a linearity correction could not be applied during reduction. However, investigation of the zero points derived from individual stars in each sample showed no trend as a function of well depth, indicating that photometric errors arising from non-linearity are unlikely to exceed 2% for sources below 80% full well. This is as expected for HgCdTe HAWAII arrays. The 2MASS catalogues were the default choice for zero point calculations due to the complete spatial coverage of the 2MASS survey. Both the 2MASS 2nd Incremental Release and the All Sky Survey were searched for counterparts to our sources (since the latter was published during this analysis), using the profile-fitted 2MASS fluxes. The colour transformations of Carpenter (2003) were used to correct the zero points from the 2MASS system to the MKO system, assuming (J-K) colours close to unity for the photospheres of the sources in each sample, as indicated by the NextGen isochrone colours shown in section 3. In the J and H bands we found that the two 2MASS surveys provided internally consistent zero points (based on 7 to 10 sources per field) which agreed well with each other. Fluxes from the 2nd Incremental Release sometimes had less scatter in the zero points derived from each star than the All Sky Survey (which has fluxes based on a reprocessing of the same data) but this was counterbalanced by the larger number of sources extracted in the Orion region in the All Sky Survey.

At K band neither 2MASS catalogue produced an internally consistent zero point for Fields 1 and 3. Field 2 contains less nebulosity than the other fields. Brighter nebulosity may explain why the 2MASS fluxes showed poor consistency in the other 2 fields, especially since the brightest sources (for which nebulosity has little effect on photometry) were often saturated in our data. For Field 1 we therefore used the dataset of Hillenbrand & Carpenter (2000) to provide the K band zero point. We found that a sample of 14 sources in the northern third of the field (the region of overlap with our data) yielded a very consistent zero point with formal uncertainty of 0.013 mag, after excluding 4/14 photometric outliers from the calculation. For Field 3, the longer integration time per data frame and excellent spatial resolution meant that more bright sources were saturated so fewer sources were available for photometric comparison. Comparison with the overlapping region of the Hillenbrand & Carpenter dataset showed no internal consistency for sources with K magnitudes $13 < K < 16$. Since observing conditions were flagged by the observers as photometric we therefore used the single Gemini photometric standard to define the zero point, and checked it against the brightest sources in the Hillenbrand & Carpenter dataset that were unsaturated in our data. Agreement to better than 0.02 mag was found for the 2 sources in that dataset with $13 < K < 14$. An additional check for all 3 fields at all 3 wavelengths was made by comparison with the JHK photometry of Muench et al. (2002, NTT dataset). The K band zero point for Field 3 derived from 18 sources with $13 < K < 16$ agreed to within 0.012 mag with our adopted value. Note that the K band filter used in the Hillenbrand & Carpenter (2000) Keck data was judged sufficiently similar to the MKO K band that no photometric transformation was necessary.

Comparison of our 9 zero points for the 3 fields with those derived from the Muench et al.(2002) data showed that 7/9 agreed to within 0.05 mag but the H and K zero points for Field 2 differed by approximately 0.1 mag. Similarly, comparison with the J and H band data of LR00 and Lucas et al.(2001), which were taken on several different nights, yielded close agreement for 5/6 zero points but a 0.1 mag disagreement for Field 3 in the J band. We therefore caution that the fluxes presented in this paper may have errors of ~ 0.1 mag arising from the zero points, though the similarity of the (J-H) vs. (H-K) two colour diagrams for the 3 fields suggests that the errors are probably less than this. With regard to source colours and dereddening analysis, variability is likely to have produced larger errors (~ 0.1 mag or more) than the process of photometry in perhaps half of all sources, see Carpenter, Hillenbrand & Skrutskie 2001; Kaas 1999).

3 RESULTS

3.1 Colour-magnitude Diagrams

In Figures 2 and 3 we present the photometric results as K vs.(H-K) and H vs.(J-H) colour magnitude diagrams. Data points are shown by filled circles, or open circles for the most uncertain points. For saturated sources we use data from the 2MASS archive and the surveys of Hillenbrand & Carpenter (2000) and Muench et al.(2002). Fluxes and coordinates are given in Table 2¹. A theoretical 1 Myr isochrone for masses ranging from $1.2 M_{\odot}$ to $0.003 M_{\odot}$ ($3 M_{Jup}$) is plotted as a solid curve at the left of each colour magnitude diagram and solid lines parallel to the reddening vector are used to distinguish between stars, brown dwarf candidates ($M < 0.075 M_{\odot}$) and planetary mass candidates (PMCs) ($M < 0.012 M_{\odot}$). Substellar sources are referred to only as candidates since the great majority have not yet been observed spectroscopically and there is likely to be a significant proportion of background stars among the faintest sources in this very deep survey (see section 3.2). 396 point sources were detected in total of which 390 were seen at K band, 365 at H band and 326 at J band. The presence of ~ 33 PMCs is apparent (mostly new detections) and we confirm the detection all sources previously published within the area of this survey in LR00 and Lucas et al.(2001).

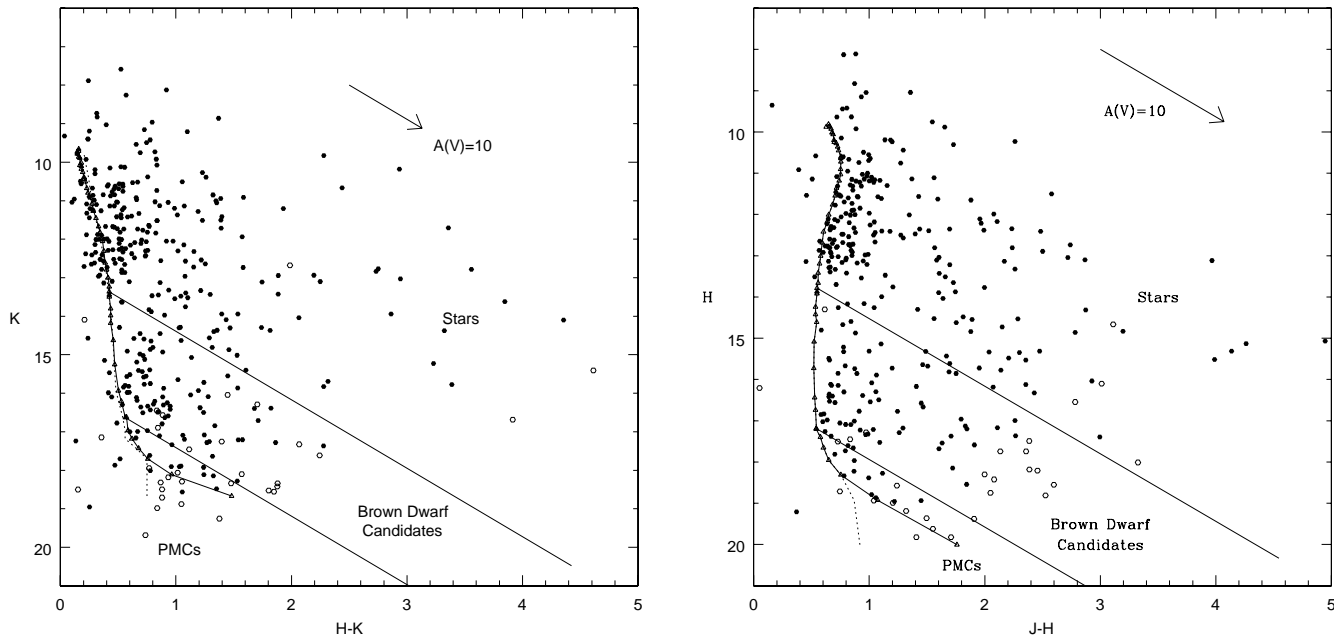
To construct the theoretical isochrone we used a combination of the NextGen isochrone (Baraffe et al.1998; Chabrier et al.2000) at effective temperatures $T > 2200$ K and the DUSTY isochrone of (Chabrier et al.2000) at $T < 2200$ K. The dust free NextGen atmospheres provides a better fit to the colours of mature field dwarfs above 2200 K but the DUSTY atmospheres are better at 1800 to 2200 K, corresponding to 4.5 to $9 M_{Jup}$ on the 1 Myr isochrone. (Note that we have added a correction of 0.15 mag to the (J-H) colours of the DUSTY isochrone. This was indicated for field dwarfs (Chabrier et al.2000) and permits a smooth joining with the NextGen isochrone in Figure 3.) Below

1800 K the DUSTY model predictions become much redder than is observed in field dwarfs. The same effect is seen here where the isochrone curves through the faintest data points at $K > 16.5$ in the K vs.(H-K) diagram. This is unsurprising since the DUSTY model represents the limiting case of high dust opacity. In the K vs.(H-K) diagram we overplot the observed colours of field stars and brown dwarfs as a dashed line, using data from Knapp et al.(2004); Leggett et al.(2001), Dahn et al.(2002) and Tokunaga (2000). The colour transformations of Carpenter (2002) were used to convert to the MKO photometric system. It is clear that the much lower surface gravity of 1 Myr sources has little effect on the (H-K) colours at $T > 1800$ K, so we can adopt the colours of field L dwarfs with some confidence for cooler 1 Myr old objects with masses in the range 3-5 M_{Jup} , for which the isochrone predicts $1900 > T > 1550$ K. Therefore when calculating dereddened fluxes we deredden to the theoretical isochrone at $T > 1900$ K (solid lines) but adopt field dwarf colours (dashed lines) for $T < 1900$ K, corresponding to $M < 5 M_{Jup}$.

The theoretical isochrone in the H vs.(J-H) diagram lies to the left of almost all the data points. The NextGen isochrone may be slightly too blue at brown dwarf masses (see section 3.4) since there is a slight gap (~ 0.1 mag) between the isochrone and the data points at $13 < H < 17$. Main sequence colours are again adopted for the coolest sources with $T < 1900$ K, as shown by the dashed extension to the theoretical isochrone. Two faint sources show very blue colours in the H vs.(J-H) diagram, lying well to the left of the isochrone. One of these is an uncertain data point shown by an open circle at $H=16.2$, $J-H=0.05$; it lies atop a pedestal of nebulosity that undoubtedly contaminates the point source flux. The other, Source 318, has $H=19.21$, $J-H=0.37$, $H-K=0.25$, and is a candidate T dwarf. Source 318 is discussed further in section 3.5. A few much brighter sources also lie to the left of the isochrone in Figure 3 but these data points are mostly drawn from other surveys (being saturated in our images) so it is difficult to comment upon them. A significant number of data points derived from this survey lie 0.2-0.3 mag to the left of the isochrone in Figure 2. Some of these have uncertain photometry (open circles): some lie atop highly structured nebulosity and some appear slightly resolved at 1 wavelength, suggesting that they are very young sources embedded in circumstellar matter. Other sources with apparently well measured fluxes are likely to be due to either: (a) photometric scatter from the wings of the error distribution in this large dataset (particularly at K band where the background subtraction was difficult); or (b) the intrinsic spread in the colours of the photospheres, which is approximately 0.3 mag in field L dwarfs; or (c) variability, since fluxes in the different filters were often obtained on different nights.

It is preferable to deredden the observed fluxes using the H vs.(J-H) diagram since the (H-K) colours of some faint sources probably have excesses attributable to hot circumstellar matter (see section 3.4). However the K vs.(H-K) diagram must be used for sources which are not detected at J band, and we also use it for sources which have very low signal to noise at J band but good H and K band photometry. The mean (H-K) colour excess for the brown dwarfs in our sample is close to zero (see section 3.4) so we do not attempt to correct for it when dereddening sources detected in

¹ The full Table 2 is available in the electronic on-line version. H band images located at <http://star-www.herts.ac.uk/~pwl/gemini.html> can be used to locate sources.



(left) Figure 2. (right) Figure 3. The colour magnitude digrams show all 396 sources detected in the survey region (filled circles for good data and open circles for data with uncertainties > 0.2 mag along either axis). The solid line connecting the triangles shows a combined NextGen and AMES-Dusty theoretical 1 Myr isochrone (see text) while the dashed lines show the colours of mature field dwarfs with the same temperatures as a check on the calculation. The reddening vector in each figure shows the effect of 10 magnitudes of visual extinction on the data points. A wide range of extinctions is apparent, from $A_V = 0$ up to $A_V = 50$. Solid lines parallel to the reddening vector are used to separate stars, brown dwarf candidates and planetary mass candidates.

only 2 colours. Note that PMCs with K band excesses may lie to the right of the dividing line between brown dwarfs and PMCs in Figure 3 and therefore appear overmassive.

3.2 Luminosity Functions and Background Contamination

In Figure 4 we plot the K band luminosity function, using two panels to show the effect of shifting the bins by half a bin width. The H and J band luminosity functions are plotted in Figure 5. The solid histogram of Figure 4 shows the actual data, while the dashed histogram at the faint magnitudes shows the inferred luminosity function after correcting for incompleteness (see below). The stellar peak at $K=11-12$ and the brown dwarf peak at $K=16$ are apparent. These features have been previously reported by several authors for samples dominated by the central regions of the Trapezium cluster at $r < 2.5$ arcminutes from θ_1 Ori C (eg. McCaughrean et al.1995; LR00, Muench et al. 2002). It is interesting to see a similar luminosity function in this survey of the outer cluster ($r=2$ to 5 arcmin). This result is not very surprising since the extreme youth of the cluster has allowed little time for dynamical mass segregation. The cluster is only a few crossing times old for an assumed age of a few Myr and significant dynamical mass segregation is not expected until an age > 10 Myr (eg. de Grijs et al. 2002a; 2002b; 2002c). There is a hint of a third peak near $K=18.5$, which appears independent of the binning after correcting for incompleteness. However this possible third peak does not rise very significantly above the level of shot noise so it is unlikely to be real.

The analyses of Muench et al.(2002, based on photometry of an offset field) and Hillenbrand & Carpenter (2000, based on a model of the galactic stellar population) both indicate that contamination by background objects starts to become significant at about $K=16$ (or perhaps a little fainter, depending on the assumed extinction through the backdrop of OMC-1) and then rises to fainter magnitudes, perhaps peaking at $K=19$ to 20 (Hillenbrand & Carpenter 2000). Given that the observed luminosity function declines beyond the brown dwarf peak at $K=16$ despite the presence of background contamination it is probable that the cluster luminosity function declines steeply.

When considering the luminosity function in the planetary mass regime it is necessary to take account of incompleteness. Completeness was calculated by generating large numbers of artificial stars with the ADDSTAR routine in IRAF and then inspecting the images to see whether the sources were clearly detected. Only sources detected at $> 5-\sigma$ in at least 1 filter (defined using the local background noise) are included in the catalogue in Table 2. Photometry at $< 5-\sigma$ in the J or H bands is included if there is a $> 5-\sigma$ K band detection. However, many possible K band detections with fluxes much greater than the $> 5-\sigma$ detection threshold were excluded because the presence of highly structured nebulosity in most of the survey region made it difficult to distinguish low signal to noise detections from local peaks in surface brightness. This was a somewhat subjective judgement, in which we were careful to exclude detections which might be false from the catalogue. This subjective element has little significance for the derived IMF since detection in at least 2 filters is required to calcu-

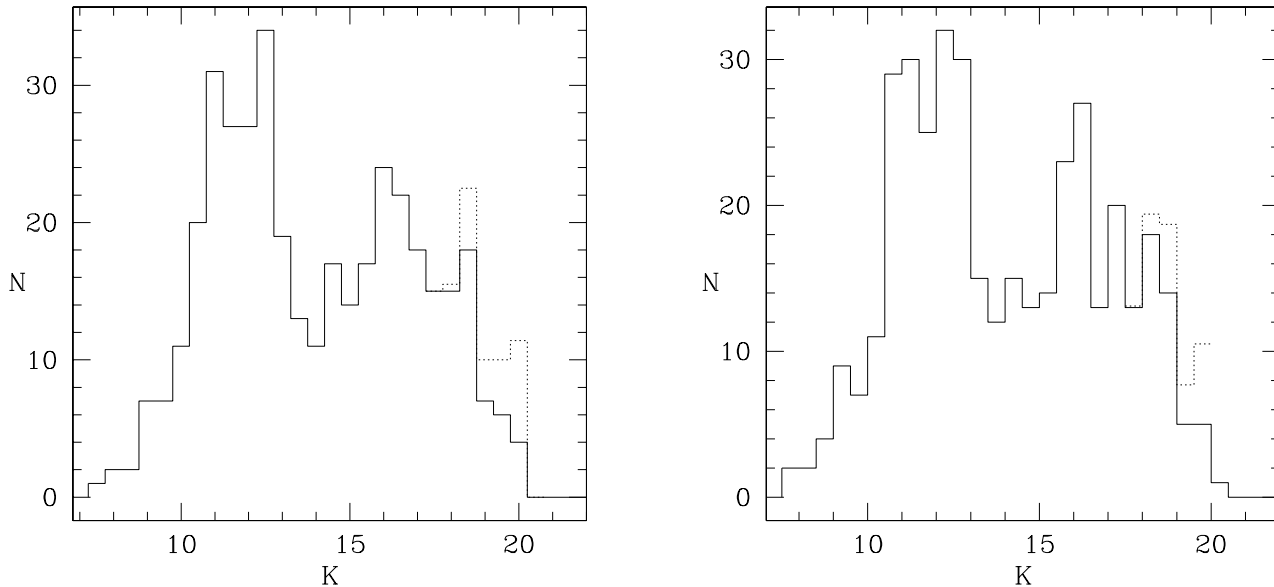


Figure 4. Observed K band Luminosity Function. The histogram is shifted by half a bin between the 2 plots to illustrate the shot noise. The solid line histogram shows the data while the dashed histogram shows the effect of correcting for incompleteness at faint magnitudes.

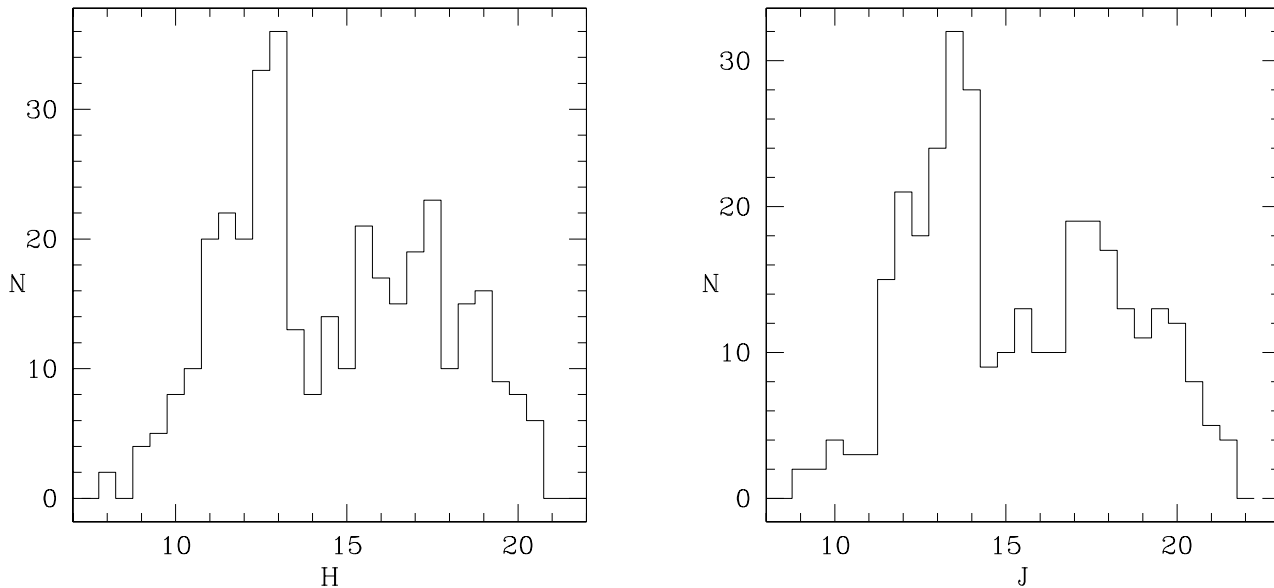


Figure 5. (left) Observed H band Luminosity Function. (right) Observed J band Luminosity Function.

late a dereddened luminosity and almost all the faintest H band detections were clearly seen at K band. When assessing completeness with artificial stars we compared the data with sources which were included in the catalogue to ensure consistency. The experiments with ADDSTAR showed that completeness is patchy, with Field 1 being approximately 1 magnitude less sensitive than the other 2 fields owing to relatively bright nebulosity and the poorer quality of data from the engineering grade array. Completeness averaged over the whole survey region declines from 80% at $K=18.5$ to 70% at $K=19.0$, 60% at $K=19.5$ and 35% at $K=20.0$. (These figures have a precision of approximately 5%, eg. completeness is $80\% \pm 4\%$ at $K=18.5$.)

The solid line histograms shows a marked decline in

the luminosity function at $K \geq 19$, which after correction for incompleteness (dashed lines) appears rather as a flattening off at a level of ~ 10 sources per bin at $K \geq 19$. Since contamination by background stars is expected to introduce a relatively large number of stars at these magnitudes it seems likely that the luminosity function for cluster members declines toward fainter magnitudes in the planetary mass regime. There is no evidence for a very large population of planetary mass objects such as that suggested by Bejar et al.(2001) for the σ -Orionis cluster.

Unfortunately the uncertainties in the extinction through the OMC-1 cloud on different sight lines through the survey region have the consequence that even if very sensitive data were available for offset fields it would be im-

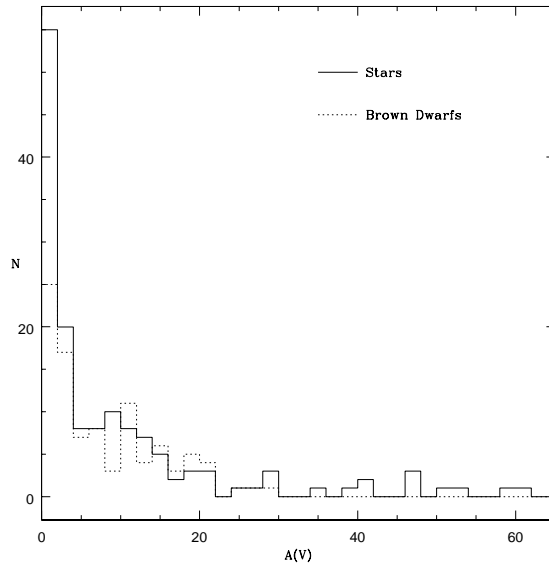


Figure 6. Histograms of the measured extinction towards the stars (solid line) and brown dwarfs (dashed line). PMCs are excluded since all have low extinction. The brown dwarf histogram is flatter than the stellar histogram at $12 < A_V < 20$, despite rising incompleteness at $A_V > 12$. This suggests that the brown dwarf sample includes some background stars at $A_V > 10$.

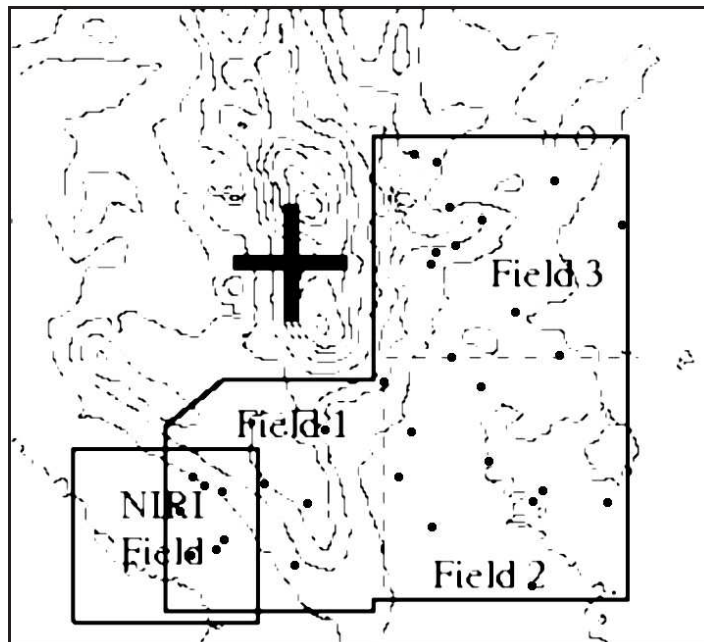


Figure 7. Magnified view of Figure 1, with the location of the 33 PMCs shown as filled circles. PMCs are difficult to detect in the northern half of Field 1 due to the bright Orion Bar. Sources can be more clearly located using the on line data at <http://star-www.herts.ac.uk/~pwl/gemini.html>.

possible to calculate the number of background stars with high confidence. Histograms of measured extinction are plotted in Figure 6 for stars and brown dwarfs (excluding PMCs) to provide some insight into the extinction in our survey region. The solid line histogram for stars (which is expected to include hardly any background stars) declines smoothly

from $A_V = 10$ to $A_V = 20$. If there were no background stars among the brown dwarf candidates then we might expect a slightly steeper decline in the dashed histogram for brown dwarfs in this range, since the sample begins to suffer from incompleteness at $A_V > 12$. However, the dashed histogram remains fairly flat in the $A_V = 12$ to 20 range, suggest-

ing that there is a significant number of background stars with $A_V > 10$ (and K mag > 16) among the brown dwarf candidates. Alternatively, the relatively high proportion of brown dwarf candidates with $10 < A_V < 20$ could conceivably be due to circumstellar matter, since it has been suggested that a significant fraction of proto-brown dwarfs are obscured by their own highly flared accretion discs (Walker et al. 2004). In any event, the probable existence of a background population with $A_V > 10$ provides little information on the contamination among PMCs, since the sensitivity limits cause almost all of these have $A_V < 10$. The detection of a significant fraction of brown dwarf candidates and stars with $A_V > 10$ indicates that the OMC-1 cloud provides an obscuring screen which removes background stars from the PMC sample over much of the survey area. However, some of this extinction may be intrinsic to very young protostars and proto-brown dwarfs rather than due to the screen. Moreover, observations of star formation regions much closer to the galactic plane than the Trapezium cluster ($b = -20^\circ$) such as Serpens (Kaas 1999) and Chamaeleon I (unpublished observation by these authors) have shown that the extinction through a cloud can be very patchy on spatial scales less than 1 arcminute.

The locations of the PMCs are indicated as filled circles in Figure 7. The distribution of PMCs is fairly uniform, though there is some sign of an excess of PMCs toward the eastern edge of Field 1. This might have been interpreted as a sign of a general increase in background contamination with increasing distance from the dense ridge of OMC-1. However, visual inspection of the partially overlapping field observed with Gemini North/NIRI showed that this group of faint sources does not extend further to the east. Therefore it is likely just a chance grouping.

Since background contamination is difficult to calculate reliably, spectroscopic follow up of a large sample of PMCs is essential to determine the luminosity function of cluster members. We are presently in the process of obtaining such data. It is possible to reduce the effect of background contamination by using a subsample with low reddening but even this method is imperfect, as discussed in the next section.

3.3 The Initial Mass Function

Since we do not have effective temperatures for most PMCs, an age must be assumed for the sources in order to derive a mass from the luminosity using a theoretical isochrone. In Figure 8 we investigate possible forms of the IMF for different samples and assumed ages. Since the colours and fluxes of the theoretical isochrone become unreliable below 1800 K (see section 3.1) this conversion becomes very uncertain for masses below $5 M_{Jup}$ and we somewhat arbitrarily use the dereddened H band fluxes for the luminosity to mass conversion. However, given the binning adopted in Figure 8 this has little consequence for our analysis.

The bottom panels of Figure 8 show the mass function for subsamples with $A_V < 5$, in order to reduce background contamination and ensure good completeness. The top panels include the full range of measured extinctions (calculated from the colour magnitude diagrams as described at the end of Section 3.1) and are incomplete at low masses

due to brown dwarfs being reddened beyond the detection threshold.

In the $A_V < 5$ plots a dashed extension to some of the least massive bins corrects for the effect of incompleteness due to limited sensitivity, under the assumption that the typical extinction is $A_V = 2.5$. In the left panels we assume an age of 1 Myr and in the right panels we assume an age of 10 Myr. Most previous age estimates for cluster members, made using the HR diagram or detection of circumstellar matter, have found a typical age of slightly less than 1 Myr. In a recent spectroscopic survey Slesnick, Hillenbrand & Carpenter (2004) suggested that the M-type cluster population has a much broader age distribution than the earlier spectral types, including a substantial fraction ($\sim 50\%$) of 10 Myr old sources whose masses are much higher than would be derived from a simple luminosity to mass conversion using a 1 Myr isochrone. The status of these apparently warmer, older and more massive M type sources is presently unclear: in observations of the outer parts of the cluster as covered in this survey the fraction of luminosity selected brown dwarfs with spectra earlier than mid-M type found in the optical spectra of Riddick, Roche & Lucas (2005) and the H band spectra of Lucas et al. (2001) is closer to 10%. In addition the L band photometry of Lada et al. (2004) in the central regions of the Trapezium yielded a similar disc fraction in stars and brown dwarfs ($\sim 50\%$) in both photometrically selected brown dwarfs and a spectroscopically confirmed subsample. This result is hard to reconcile with a large 10 Myr old population, given that disc lifetimes appear to be similar in stars and brown dwarfs, eg. Mohanty et al. (2005).

However, it is known that there is a diffuse population in Orion with ages of ~ 10 Myr on spatial scales up to a degree from the Trapezium cluster (eg. Hillenbrand 1997) and while this population is expected to introduce < 1 spurious PMC in the survey region (see Lucas et al. 2001) it is useful to consider the effect that a 10 Myr age would have on the results.

The 1 Myr histograms shows a mass function which peaks near $0.2 M_\odot$ and declines through the brown dwarf regime, in agreement with previously published surveys. The population of PMCs is small, confirming the impression given by the colour magnitude diagrams and the K band luminosity function. The mass function in the lower left panel is not well fitted by a power law but since power law indices have the virtue of simplicity we provide one for that panel here. Using the Chi squared minimisation straight line fitting routine LINFIT in the IDL package and adopting Poisson errors we find, in the $\log(M) = -1.0$ to -2.2 range, that the index is $\alpha = 0.31 \pm 0.11$, where $N(M) \propto M^\alpha$.

It should be noted that there is strong mass segregation in the Trapezium cluster. Hillenbrand (1997) found that the ratio of high mass to low mass stars is fairly constant at distances $r \geq 0.3$ pc from the cluster centre but there is a much larger fraction of high mass stars nearer the cluster centre. More than 90% of our survey area lies at $r \geq 0.3$ pc from θ_1 Ori C, so we can assume that the derived IMF for $A_V < 5$ sources provides information for a representative sample of the outer cluster provided that (i) there is no significant change in the IMF with increasing extinction along the line of sight, and (ii) the radial IMF variation reported by Hillenbrand (1997) holds true for substellar sources also.

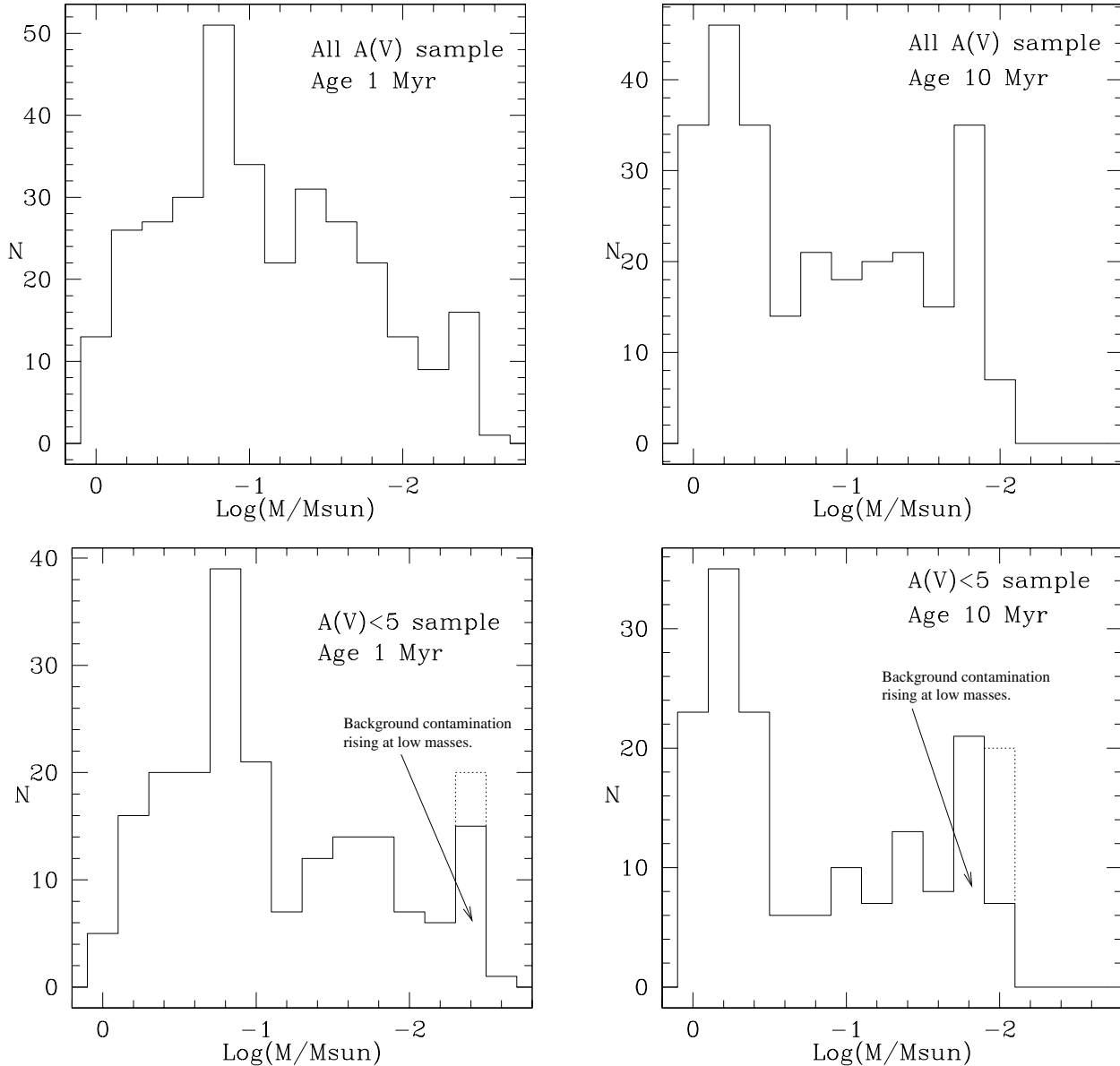


Figure 8. Derived mass functions for different assumed ages. (left) 1 Myr. (right) 10 Myr. Upper panels show all sources detected. Lower panels show subsamples with $A_V < 5$, to reduce background contamination. For the $A_V < 5$ subsamples it is possible to correct for incompleteness at the very low mass end: the effect is shown by the dashed histogram in the lower panels. The apparent rise in the mass functions at very low masses is attributed to background contamination.

The $\alpha = 0.31$ value indicates a slow decline in the IMF at substellar masses which agrees well with the results reported for the ρ Ophiuchus and IC348 clusters (Luhman et al. 2000; Muench et al. 2003). It contrasts with the value $\alpha = -0.8 \pm 0.4$ reported in the σ -Orionis cluster (Bejar et al. 2001) and the large number of substellar candidates detected by Oasa (2003) in the Chamaeleon I, S106 and NGC1333 regions. However these quoted surveys are all based on photometric candidates and in the more diffuse clusters the amount of contamination by background stars is hard to estimate without spectroscopic follow up of a large sample. Hence, it is not clear at present whether there are large variations in the substellar IMF between star forming regions,

If PMCs are excluded from consideration then brown dwarf candidates in the $0.012 < M < 0.075 M_\odot$ mass range constitute 28% of the $A_V < 5$ subsample and 32% of the

sample that includes all extinction values. This difference, which is visible in the left panels of Figure 8, suggests that there is some background contamination among the more highly reddened candidates, as noted in section 3.2. This is consistent with the detection of 2 possible background stars with $A_V \approx 10$ in the sample of 21 low mass sources in the spectroscopic sample of Lucas et al. (2001). However, the effect may be slightly exaggerated by imperfections in the colours of the isochrone in Figure 2: there is a small gap of $(J - H) \approx 0.1$ (or $A_V \approx 1$) between the isochrone and the data points in the brown dwarf mass range that does not exist at stellar or planetary masses (see also Figure 6). Hence the extinction may be slightly overestimated for the brown dwarfs, reducing the number in the $A_V < 5$ subsample by up to 20%. This is sufficient to eliminate the 4% discrepancy in the brown dwarf fraction without invoking background stars.

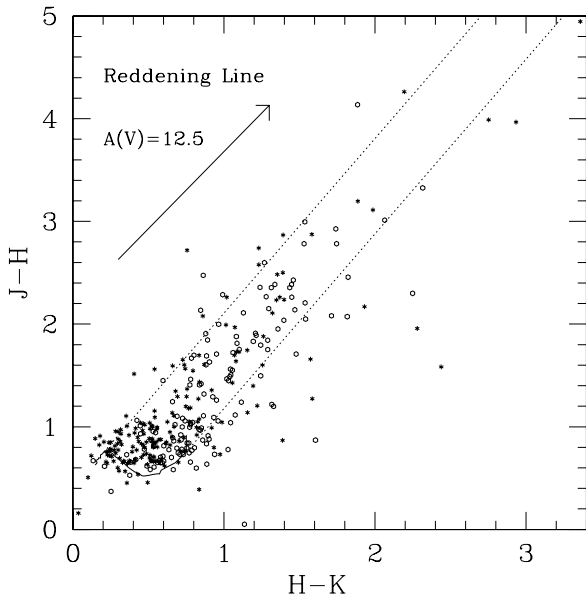


Figure 9. Two Colour Diagram. More luminous sources with dereddened H mag $H_{dr} < 13$ are marked with stars. Less luminous sources ($H_{dr} > 13$) are marked with open circles. The combined isochrone described in section 3.1 is plotted as a solid line. Dashed lines parallel to the reddening vector are drawn from the extreme tangents to the isochrone and enclose most of the data points.

The extinction histograms in Figure 6 and the analyses of Muench et al.(2002) and Hillenbrand & Carpenter (2000) suggest that a small amount of contamination is expected among the fainter brown dwarf candidates with $K \geq 16$, so a compromise brown dwarf fraction of 30% is perhaps the best estimate in this survey of the outer cluster.

With an assumed age of 1 Myr the $A_V < 5$ subsample (lower left panel of Figure 8) is almost 100% complete to $M = 5 M_{Jup}$ and 75% complete in the bin at $\log(M) = -2.4$ ($3-5 M_{Jup}$). Both the $A_V < 5$ subsample and the full sample show an apparent rise in the bin at $\log(M) = -2.4$, which is very likely due to background contamination. The analysis of Muench et al.(2002) illustrates how a background population with a Gaussian distribution of A_V (for example) can introduce significant contamination among the PMCs with $A_V < 5$ even if the median $A_V \geq 10$, owing to the large number of background sources expected at $K > 17$. At planetary masses the difficulty of detecting highly reddened sources ensures that most of the detected sources are in the $A_V < 5$ subsample. In this subsample of 208 sources there are 24 PMCs. The correction for incompleteness in the $\log(M) = -2.4$ bin (assuming typical $A_V = 2.5$ in the subsample) raises this to 29 PMCs. Neglecting the single PMC in the $\log(M) = -2.6$ bin these constitute 13.2% of the total. This may be regarded as an upper limit to the PMO (planetary mass object) number fraction in the mass range $0.0032 < M < 0.0120 M_\odot$, or $3-13 M_{Jup}$. However, the $A_V < 5$ mass function appears to drop by a factor of two at the deuterium burning limit: there are 14 sources per bin in the $\log(M) = -1.6$ and -1.8 bins but only 6-7 in the $\log(M) = -2.0$ and -2.2 bins. This measured drop deviates by 2.8σ from a flat mass function with a mean of 14 sources per bin. If the mass function for bona fide PMOs is flat at 6.5 sources per bin then the PMO number fraction in the $0.0032 < M < 0.0120 M_\odot$ mass range (constituting slightly less than 3 bins) is 9.5%. It should be emphasised that these masses are only notional, being subject to sig-

nificant but poorly quantified theoretical uncertainties (see Baraffe et al. 2002) for sources with ages of ~ 1 Myr. There is some recent evidence that pre-main sequence isochrones are reliable both at stellar masses (Hillenbrand & White 2004, based on dynamical mass measurements of binaries) and at substellar masses (Mohanty et al. 2004a, 2004b, using masses estimated from surface gravity measurements for brown dwarfs with ages of a few Myr.)

The 10 Myr histogram is shifted to higher masses by a factor of 2.5 to 3 relative to the 1 Myr plot. However, even under this extreme assumption the $A_V < 5$ population includes a few PMCs and more than 20 very low mass brown dwarf candidates with $M < 0.02 M_\odot$.

3.4 K band Excesses?

Muench et al.(2001) reported the detection of K-band excesses attributable to hot circumstellar dust in $\sim 65\%$ of Trapezium brown dwarfs. Lada et al.(2004) confirmed and extended this result by including L band photometry and a spectroscopically selected sub-sample for which the photospheric colours could be more reliably established. This result was somewhat unexpected since theoretical modelling (eg. Liu et al. 2003) of a conventional circumstellar disc in hydrostatic equilibrium predicted that infrared excesses would be smaller in brown dwarfs than in stars. Further interest in the question of the matter distribution around brown dwarfs stems from: (a) the hypothesis of brown dwarfs as “ejected stellar embryos” (Reipurth & Clarke 2001; Bate, Bonnell & Bromm 2003) which would be expected to have at most small discs; and (b) the calculation by Walker et al.(2004) that young brown dwarfs with large discs ($r \geq 150$ AU) could be hidden by the large flaring angle and hence remain undetected.

In Figure 9 we plot all JHK detections in the survey in a two colour diagram. The intrinsic colours for 1 Myr old sources are illustrated by the curved line, using the com-

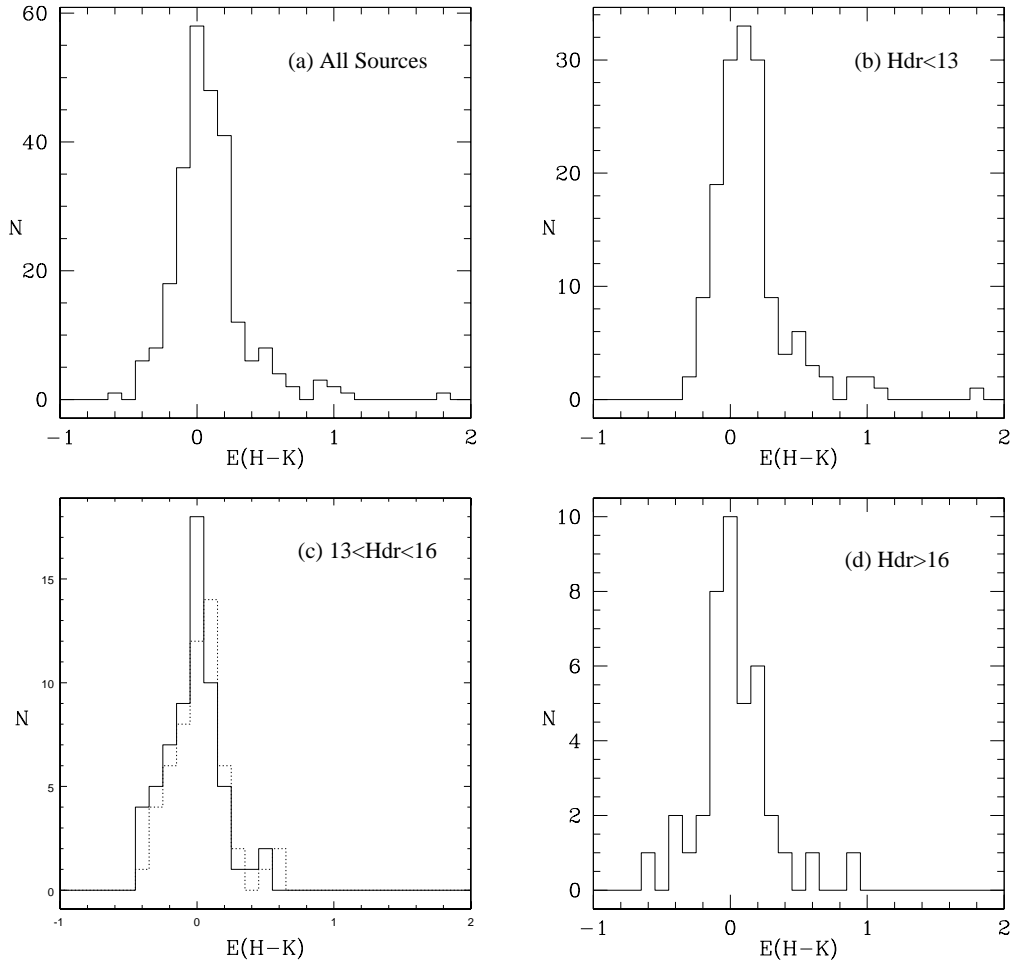


Figure 10(a-d). Histograms of H-K colour excesses, after dereddening to the 1 Myr isochrone. (a) all sources; (b) $H_{dr} < 13$; (c) $13 < H_{dr} < 16$; (d) $H_{dr} > 16$, where H_{dr} is the dereddened H magnitude.

binned isochrone described in Section 3.1, incorporating field dwarf colours for the reddest objects at $T_{eff} < 1900$ K. The two reddening vectors extending from the extremes of the isochrone enclose the majority of the data points, showing that this type of diagram alone is of little value in identifying sources with (H-K) colour excesses owing to the wide range of possible (H-K) colours in M and L-type dwarfs. Previous workers have tended to truncate the isochrone at M9, corresponding to (H-K)=0.5, but in this very deep survey L-type sources may well be included. Among the sources with low extinction ((J-H)< 1.2) the fainter sources with dereddened H mag $H_{dr} > 13$ (open circles) tend to have redder (H-K) colours than the brighter sources (stars), most likely because fainter sources have cooler and redder photospheres. The two colour diagrams for the individual fields are similar (not shown) except that Field 3 has more scatter, providing a large fraction of both the sources with apparent (H-K) excess and anomalously blue colours (nearly all of stellar mass) lying above and to the left of the reddening lines. Although all 3 fields lie at similar distance from the cluster centre, Field 3 is closest to the densest parts of the OMC-1 ridge, associated with ongoing star formation. The wider scatter in the colours might therefore be explained by the presence

of younger sources with scattered light (blue sources) and emission from hot circumstellar dust (red sources).

Lada et al.(2004) also observed (in the central regions of the Trapezium) that some luminosity selected brown dwarfs run contrary to the general trend and have colours bluer than M6 (H-K=0.5), which is confirmed here. They suggested that these low luminosity blue sources might be related to the unexpectedly warm low luminosity sources reported by Slesnick, Hillenbrand & Carpenter (2004), whose nature is presently unclear. These works show that there is considerable difficulty in measuring K band excesses caused by hot circumstellar dust in a two colour diagram, due to both uncertainty in intrinsic colours of the photosphere and the effects of scattered light. It is clearly preferable to observe at longer wavelengths, where infrared excesses are larger and scattered light is less important. Samples with measured spectral types also improve confidence in the analysis (eg. Liu et al. 2003; Lada et al. 2004).

In Figure 10(a) we show the histogram of (H-K) colour excesses for 256 point sources in our sample with well measured J, H and K band fluxes and $M < 1.2M_{\odot}$ (excluding the T dwarf candidate described in the next section, which has a very large negative excess). (H-K) excesses are calculated by measuring the excess after dereddening to the H vs.(J-H)

1 Myr isochrone (with field dwarf colours at $T_{eff} < 1900$ K). Specifically, $E(H-K) = (H-K)_{obs} - (H-K)_{ext} - (H-K)_{int}$, where $(H-K)_{int}$ is the intrinsic colour of the photosphere and $(H-K)_{ext}$ is the change in the colour due to extinction. The distribution has a peak at 0.0 magnitudes and a fairly symmetric bell shaped appearance, consistent with an approximately Gaussian distribution of photometric errors. There is a slightly larger number of sources with a large positive excess ($E(H-K) > 0.5$ mag) than a large negative excess but there is little sign of the large fraction of sources with modest excesses ($E(H-K) \sim 0.2$) that would have been expected based on the previous investigations quoted above.

Figures 10(b-d) break down the diagram as a function of dereddened luminosity. Figure 10(b) indicates that sources of stellar mass do tend to have K band excesses (median 0.1 mag). This histogram is composed of approximately equal amounts of data from this survey and data from other sources (owing to saturation of bright sources in the Flamingos data) but the distributions of (H-K) excess for the two components appear to be identical (not shown).

Figures 10(c-d) show that there is little sign of (H-K) excess among the less luminous sources. The solid histogram in Figure 10(c) gives the result from sources with dereddened H mag $13 < H_{dr} < 16$ using the intrinsic colours of the theoretical isochrone. This histogram suggests a tendency for the excesses of luminosity selected brown dwarf candidates to be slightly negative. Since this is not seen at stellar masses it cannot be explained by errors in the photometric zero points. However it may be explained by a possible small error in the (J-H) colours of the isochrone, as noted in sections 3.1 and 3.3. The dashed histogram overplotted in Figure 10(c) shows that the negative excesses are eliminated if we adopt slightly redder (J-H) colours for the isochrone, thereby reducing the calculated extinction toward each source and increasing $E(H-K)$. The dashed histogram was constructed using the main sequence dwarf (J-H) colours adopted by Muench et al.(2003, figure 2) for the isochrone of D’Antona & Mazzitelli (1997), which are 0.05 to 0.13 mag redder than the isochrone on the MKO system in the appropriate magnitude range. The $(H-K)_{int}$ colours of the NextGen isochrone were retained for the calculation.

The dashed histogram in Figure 10(c) shows only a small tendency for $E(H-K)$ to be greater than zero. This is surprising given that the works of Lada et al.(2004) and Muench et al.(2001) found a large fraction of (H-K) excesses among both stars and brown dwarfs in the central parts of the Trapezium cluster, despite the fact that Muench et al.(2001) used the colours of the NextGen isochrone. Comparison of Figure 1 of Muench et al.(2001) with our corresponding colour magnitude diagrams (Figures 2 and 3) shows that the distribution of (H-K) colours is similar in the two surveys. However, the Muench et al. dataset contains a large number of brown dwarf candidates which have bluer (J-H) colours than the NextGen isochrone, in contrast to our data where brown dwarfs tend to appear redder than the isochrone. Errors in the photometric zero points are not a likely explanation since the colours of the datasets agree well for brighter sources and the Gemini zero points have been checked against those of Muench et al.(2002), see section 2. A possible explanation is that Muench et al. found many of their sources with blue (J-H) colours to be “proplyds” (O’Dell & Wen 1994) and these tended to have large

(H-K) excesses. LR00 noted that proplyd sources appear to have slightly bluer (J-H) colours than others, probably due to the effects of scattered light. This effect may be more obvious among low mass sources due to the relatively large scale height of brown dwarf disks (Walker et al. 2004). Proplyds would be expected to have relatively large (H-K) excesses both because the distortion of their (J-H) colours leads to an underestimate of $(H-K)_{ext}$ and because of the confirmed presence of large amounts of circumstellar matter. The rarity of (H-K) excesses and sources with blue (J-H) colours in the Gemini data may indicate that there is both less hot dust in the outer parts of the cluster and fewer proplyd structures (circumstellar envelopes). This would imply a slightly greater typical age for sources in this survey.

Owing to the strong sensitivity of the $E(H-K)$ histograms to small changes in colour the above explanation may well be an over interpretation of the data. The width of the distributions in Figure 10 is likely to be influenced by source variability in addition to photometric scatter, so the dataset is not ideal for detection of (H-K) excesses.

For the faintest sources (Figure 10(d)) the histogram is fairly symmetric about zero. Figure 10(d) is likely to be influenced by the contribution of background stars (see section 3.2) but we note that background stars would need to be quite cool ($(H-K)_{int} > 0.52$) in order to avoid displaying spurious (H-K) excesses.

Finally, we consider the effect of different extinction laws on the analysis. The reddening law adopted in this paper is that of Rieke & Lebofsky (1985), for which the gradient of the reddening line $S = (A_J - A_H)/(A_H - A_K) = 1.70$. The analysis of Muench et al.(2001) used the extinction law of Cohen et al.(1981), which yields a similar gradient of $S = 1.69$, despite a somewhat lower ratio of infrared to optical extinction. By contrast the $\lambda^{-1.61}$ extinction law of Cardelli, Clayton & Mathis (1989), which we adopted in LR00, has $S = 1.50$. A slope of $S = 1.50$ appears to be inaccurate, since it leads to a tendency for sources with high extinction to have smaller or negative (H-K) excesses.

3.5 A T Dwarf Candidate

In section 3.1 we noted that a single faint source, Source 318, has very blue colours, lying well to the left of the theoretical isochrones in Figure 2 and 3. The source colours are (J-H)=0.37, (H-K)=0.25, and the fluxes are K=18.95, H=19.21, J=19.58. The location of Source 318 (or 071-307 using the coordinate based naming system) is indicated in Figure 11. It lies in a region where many nebulous structures are present (some with the appearance of bow shocks) and the source density is high, suggesting that there has been recent star formation. If the object is a cluster member then the luminosity derived mass from the 1 Myr DUSTY isochrone would be $M=2.5$ to $4.5 M_{Jup}$, depending which filter is used for comparison. The corresponding temperature would be 1500 to 1800 K. Taken at face value, the blue colours imply a lower temperature, corresponding to an early T-type dwarf with significant methane absorption and $T \sim 1400$ K. Such a low temperature could be explained if Source 318 is younger than 1 Myr and has a mass of perhaps 2 to $3 M_{Jup}$. (The DUSTY isochrone does not extend below 1 Myr, for the very good reason that prediction becomes increasingly unreliable at these very young ages, see

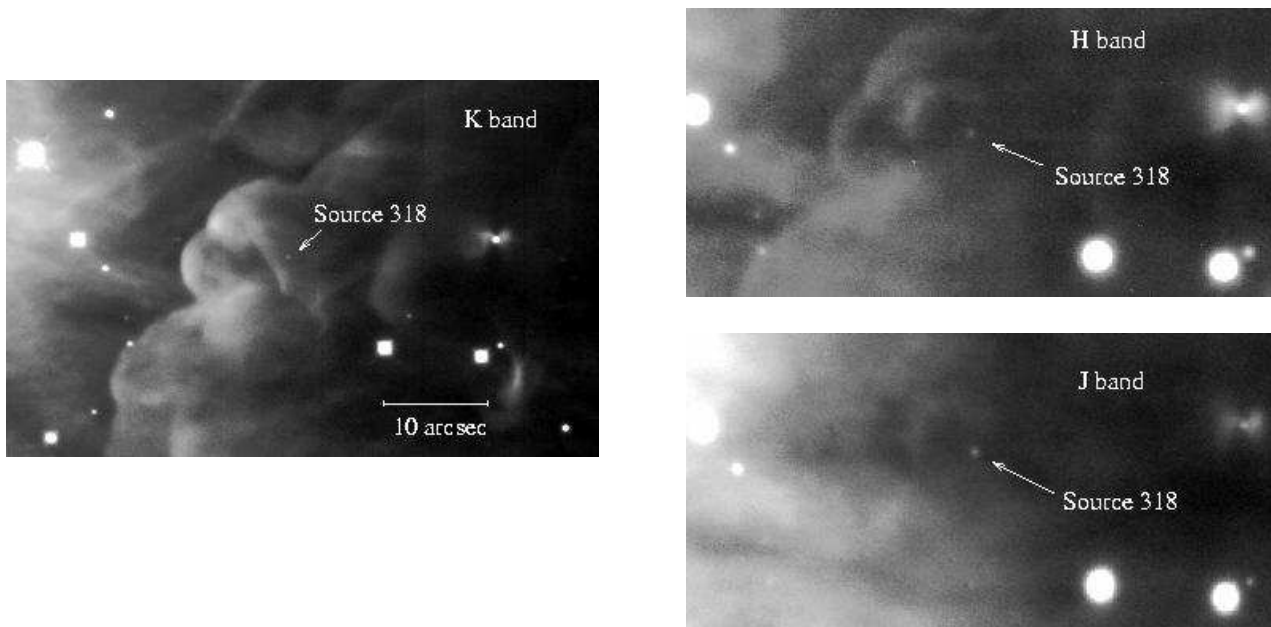


Figure 11. Images of Source 318, a T dwarf candidate (left) at K band; (right) close up views in the H and J bands. Many of the nebosity features seen adjacent to Source 318 at K band are unseen at J and H, suggesting that the source lies in front of a region of high extinction. North is up and east is to the left in these images and all later images in this paper.

Baraffe et al. 2002). The low temperature would then be counterbalanced by a larger size, to produce the observed fluxes.

However several other explanations for the data must be considered. These are:

- variability. The apparently blue colours could be an illusion caused by variations in source flux between the observations in different filters. As noted in section 2, variability at the level of 0.1 to 0.2 mag is common in low mass Young Stellar Objects (YSOs), so it is certainly possible that the true colours are redder than our photometry indicates. However, Source 318 is the only faint source in Figure 2 with well measured fluxes that is so blue in (J-H), suggesting that this type of effect on the colours is rare. The blue (H-K) colour then requires an additional variation in flux, which makes it a low probability event despite the large number of sources in the survey. If variability is the explanation for the source colours this would tend to support cluster membership.

- photometric scatter. The internal photometric uncertainties for this source are small (~ 0.1 mag) but owing to the presence of nebosity gradients, particularly in the K band, it is conceivable that the blue colours are a consequence of rare 2 or 3- σ photometric errors. This explanation is unlikely for the same reason as given above: it would require two low probability events. If this has occurred then Source 318 could be a cluster member, a background star or even a distant unresolved galaxy. We noted in Section 2 that there are significant uncertainties in the photometric zero points at a level of up to 0.1 mag. However these would systematically affect all sources in each field, so this cannot help to explain the colours.

- a foreground T-dwarf. The absence of reddening, despite the presence of strong extinction towards adjacent nebosity features shown in Figure 11, indicates that Source

318 is very unlikely to be a background star. However, its fluxes and colours are consistent with an early T dwarf (most consistent with type T3) located in the foreground at a distance of ~ 130 pc (using data from Knapp et al. 2004). The T-dwarf space density in the 800 to 1400 K range is believed to be 0.01 to 0.06 pc^{-3} (Burgasser 2004) and the volume of space at $d < 130\text{pc}$ in our 26 arcmin^2 survey area is 1.5 pc^3 . Including the effect of completeness and neglecting the (unknown) scale height of the T dwarf distribution in the plane, the probability of finding any type of T dwarf in our 26 arcmin^2 survey area down to a limit of $K=19.7$ (a factor of 2 fainter than Source 318 and approximately our 50% completeness limit) is in the range 0.02 to 0.11. Hence, while the possibility of a foreground T dwarf cannot be ignored it is another low probability event.

- scattered light. In LR00 we discovered that $\sim 14\%$ of Orion sources had anomalously blue (I-J) colours and correlated closely with the presence of circumstellar matter (the ‘proplyds’ of O’Dell & Wen 1994). It is likely that scattering by circumstellar matter is at least partly responsible for these blue colours, although the corresponding effect on (J-H) colours appeared to be smaller. A few of the sources in Table 2 have circumstellar matter that is marginally resolved in 1 of the 3 filters and these sources tend to have anomalous colours. Hence, scattering by unresolved circumstellar matter is perhaps the most likely alternative explanation for the blue colours of Source 318.

It is clear that spectroscopic follow up will be required to establish the nature of the source. Detection of methane absorption should be well within the capability of planned observations with Gemini South. This would refute most of the alternative explanations but detection of low surface gravity features would be required to rule out a foreground T dwarf and that will be more difficult.

In summary, Source 318 certainly merits further scrutiny since its possible very low mass (perhaps 2-5 M_{Jup}) challenges the theory of opacity limited star formation and unlike the other very low luminosity candidates in the survey we consider it very unlikely to be a background star.

3.6 Spatial Analysis and Binarity

We conducted an analysis of binarity and clustering in the stellar and brown dwarf populations to search for differences which might shed light on the brown dwarf formation mechanism. Previous smaller scale studies of binarity in more central regions of the Trapezium cluster (eg. Simon 1997; Petr et al. 1998; Prosser et al. 1994) have indicated that the incidence of binarity in the stellar mass population is much lower than in nearby low mass star forming regions such as Taurus-Auriga and ρ Ophiuchus but is comparable to the field population at the measured separations of a few dozen to a few hundred AU. Simon (1997) reanalysed the HST/WFPC1 dataset of Prosser et al.(1994) (containing 319 stars) and showed that the mean surface density of companions (MSDC) as a function of separation is identical to that of the Taurus-Auriga and ρ Ophiuchus star forming regions at separations up to ~ 300 AU but the binary distribution is terminated at that point. At larger separations the slope of the MSDC function becomes much flatter in the Trapezium cluster, corresponding to the changeover from binarity into the regime of random distribution or clustering, a phenomenon first discovered by Larson (1995) in Taurus-Auriga. Hence the higher incidence of binarity in Taurus-Auriga and ρ Ophiuchus is apparently due only to the presence of wide binaries (up to several thousand AU) in those regions.

It is very likely that the termination of the binary distribution at separations of a few hundred AU is due to frequent close encounters with other stars on that scale within a few $\times 10^5$ yr in the central regions of the Trapezium Cluster (eg. Petr et al. 1998; Bate, Clarke & McCaughrean 1998; Kroupa, Petr & McCaughrean 1999). After analysing a sample of 45 stars Petr et al.(1998) suggest that the incidence of binarity may be lower among Trapezium stars of mass $M < 1.5 M_{\odot}$ than among more massive stars. They found no sign of brown dwarf companions to more massive stars down to a sensitivity limit of $K \approx 16$, although 4 very close stellar binaries were detected.

3.6.1 Gemini data

The two point correlation functions for stars and brown dwarfs are plotted in Figure 12, correcting for boundary effects with method 3 of those described by Bate et al.(1998). For each subsample (stars, brown dwarfs) every source in the subsample is correlated with every other source detected in the survey region. Hence stellar binaries contribute twice to the stellar function, star/brown dwarf binaries contribute once to each function, and brown dwarf binaries contribute twice to the brown dwarf function. The spike in the correlation function for stars in the 2 bins at the smallest measured separations $\theta = 0.32$ to 0.79 arcsec ($140 < r < 350$ AU) shows that there is a statistically significant population of binaries which cannot be explained by chance alignment. (The

two point correlation function $w(\theta)=0$ for a random distribution of sources within the survey area and is related to the MSDC by the equation $w(\theta) = (MSDC(\theta)/(N_*/A)) - 1$, where N_* is the number of stars in the survey and A is the survey area (Peebles 1980). It is notable that binaries appear less common in the brown dwarf population (see dashed histogram in Figure 12), particularly in the smallest measured bin at $\log(\theta) = -0.4$. Sensitivity to binaries is similar in both histograms, being essentially independent of flux. At separations $\gtrsim 1$ arcsec there is a significant probability of chance alignment causing spurious binaries (see eg. Petr et al. 1998), so we limit our discussion of binarity statistics to the 2 closer bins. Selection effects have been minimised by excluding PMCs from the brown dwarf sample, since these are close enough to the sensitivity limit for companions to scatter below it and they are also likely to be significantly contaminated by background stars. For the same reasons the subsamples exclude brown dwarf candidates and stars with $H \text{ mag} > 17.19$, which is the magnitude of a 1 Myr old source at the deuterium burning threshold with zero extinction. In practice none of these excluded faint sources are found to be in binary systems. The subsamples also exclude sources at the edges of the data mosaic, for which sensitivity to faint brown dwarf binaries is poor. It should be noted that there are strong observational selection effects against the detection of the closest binaries which reduce the height of the spike in the plotted two point correlation function. Close binaries which are detected tend to be near equal luminosity pairs located in the part of the survey with the highest spatial resolution (Field 3). We do not attempt to correct for this selection effect since the companion luminosity function is unknown.

This difference between stellar and brown dwarf two point correlation functions has a rather modest statistical significance. The spike in the stellar correlation function in the $\log(\theta/\text{arcsec}) = -0.4$ and -0.2 bins is due to 6 stellar binary systems (see Table 3) and 1 star/brown dwarf pair from a subsample of 205 stars, a fraction reasonably consistent with the results for the cluster centre referenced above, given the small range of separations considered here. The brown dwarf subsample in Figure 12 numbers 56 sources but includes only half of 1 binary system: Source 216 is located in an apparent star/brown dwarf pair ($\theta = 0''.72$) and is the only high probability member of a binary system in the 2 closest populated bins. The expected number of apparent binary pairs in a sample of size N caused by chance alignment is $N\pi\theta^2\Sigma$ (see Petr et al.1998), where $\Sigma = 3.94 \times 10^{-3} \text{arcsec}^{-2}$ is the surface density of all sources in the survey. Σ is fairly uniform in the survey area as indicated by the fact that $w(\theta) \approx 0$ at $\theta > 10$ arcsec. We would expect to observe a decline in source density with increasing distance from the cluster centre (see Bate et al. 1998) but the effect is not very significant in this survey region. For an ideal survey sensitive to all possible pairings the expected contamination is 1.60 binaries in the stellar subsample and 0.44 in the brown dwarf subsample. However after correcting for the limited sensitivity to such spurious close binaries with a large difference in flux (using the observed Luminosity Function) the contamination drops to ≈ 0.79 binaries in the stellar subsample and ≈ 0.17 binaries in the brown dwarf subsample. Since these chance association binaries may include pairings with sources outside each subsample they are

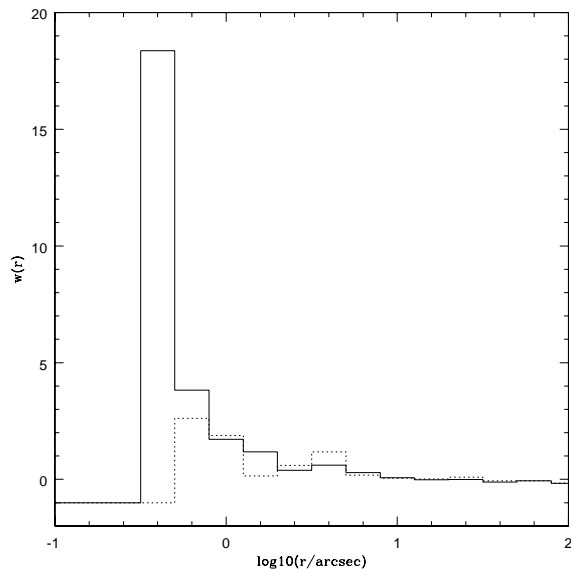


Figure 12. The Two point correlation function for the Gemini sources. (a) stars (solid histogram); (b) brown dwarfs (dashed histogram). A random distribution of sources would have $w(\theta)=0$ at all separations. A spike due to binarity is seen at small separations in the stellar subsample but only a small rise at small separations is seen in the brown dwarf subsample. This plot does not correct for the selection effect caused by reduced sensitivity to close binaries.

expected to include only 1.22 stars from the stellar subsample and 0.20 brown dwarfs from the brown dwarf subsample. We observe 13 stars in binary systems, reducing to 11.78 after correcting for chance alignment. If the incidence of binarity in brown dwarfs is equal to that of stars then we would expect 3.22 ± 1.79 members of the brown dwarf sample to be in a binary system (assuming Poisson statistics), compared to 1 which is observed. The expected chance contamination increases the expected number by 0.20 sources to 3.42 ± 1.80 . We can therefore state that the incidence of binarity in brown dwarfs is therefore lower than in stars at the $1.34\text{-}\sigma$ level of confidence. The probability of this occurring by chance is only 9.0% (using a one tail test). A similar calculation for the closest populated bin only gives a $1.46\text{-}\sigma$ result, based on the detection of 8 stars located in binaries and no brown dwarf binaries. This result has a 7.2% probability of occurring by chance.

There is no obvious reason why the binarity fraction should be linked to the hydrogen burning threshold at $0.075 M_{\odot}$. Most of the stars detected in binaries by Gemini (see Table 3) have masses $M \sim 0.2 M_{\odot}$ (which is a typical stellar mass in the cluster) and none have masses $M < 0.13 M_{\odot}$. If we extend the brown dwarf subsample to include very low mass stars with masses up to $0.10 M_{\odot}$ then the sizes of the subsamples becomes a little more equal: 190 stars and 71 very low mass stars and brown dwarfs. In these two bins the binary fraction in the less massive sample is then lower than the high mass sample with $1.75\text{-}\sigma$ confidence, which has only a 4.0% probability of occurring by chance.

3.6.2 Subaru and HST/NICMOS data

To investigate further the low incidence of binarity in brown dwarfs a similar analysis was done with 3 additional datasets: the UKIRT data of LR00 and Lucas et al.(2001), the Subaru data of Kaifu et al.(2000) and the NICMOS results tabulated in Luhman et al.(2000). Very few new sub-

arcsecond binaries were clearly resolved in the UKIRT data. By contrast many additional binaries were resolved in a reinspection of the Subaru data, which had a slightly better full width half maximum ($0.5''$) than UKIRT and much less power in the wings of the instrumental profile. These additional detections (see Table 3) were often confirmed by less clear detections in the UKIRT data.

These additional samples were chosen so as to be independent of the Gemini sample and sensitive to both brown dwarf binaries and stars. The samples are:

- the part of the Subaru dataset located at $\theta > 60''$ from θ_1 Ori C and excluding the Gemini survey region. This survey region (area 14.0 arcmin^2) produced a sample of 312 stars and 57 brown dwarfs, the assignments being decided by source luminosity with the aid of the IJH band photometry of LR00 and the HK band photometry of Hillenbrand & Carpenter (2000). 10 stellar binary systems were resolved in this sample at $\theta < 0.79''$ and 0 brown dwarf binaries. However, 2 of the closest stellar binaries are excluded from our analysis since they were only marginally resolved by Subaru and required confirmation by the shallow HST/WFPC1 survey of Prosser et al.(1994), which was not sensitive to brown dwarfs. These 2 binaries were not resolved in the published NICMOS/NIC3 photometry ($0.4''$ resolution).
- the part of the NICMOS dataset located at $\theta < 60''$ from θ_1 Ori C. The NICMOS data produced a sample of 159 stars and 43 brown dwarf candidates. In addition 7 sources of uncertain status were detected at $1.6 \mu\text{m}$ only and these were excluded from the subsamples searched for binarity. The assignment of each source to a subsample was aided by the K band photometry of Hillenbrand & Carpenter (2000). Somewhat surprisingly no binaries at all were detected in this sample with $\theta < 0.79''$. 2 stellar binaries happen to straddle the $60''$ boundary but these were included in the Subaru sample.

This absence of binaries in the NICMOS sample is surprising given the relatively high incidence of binarity mea-

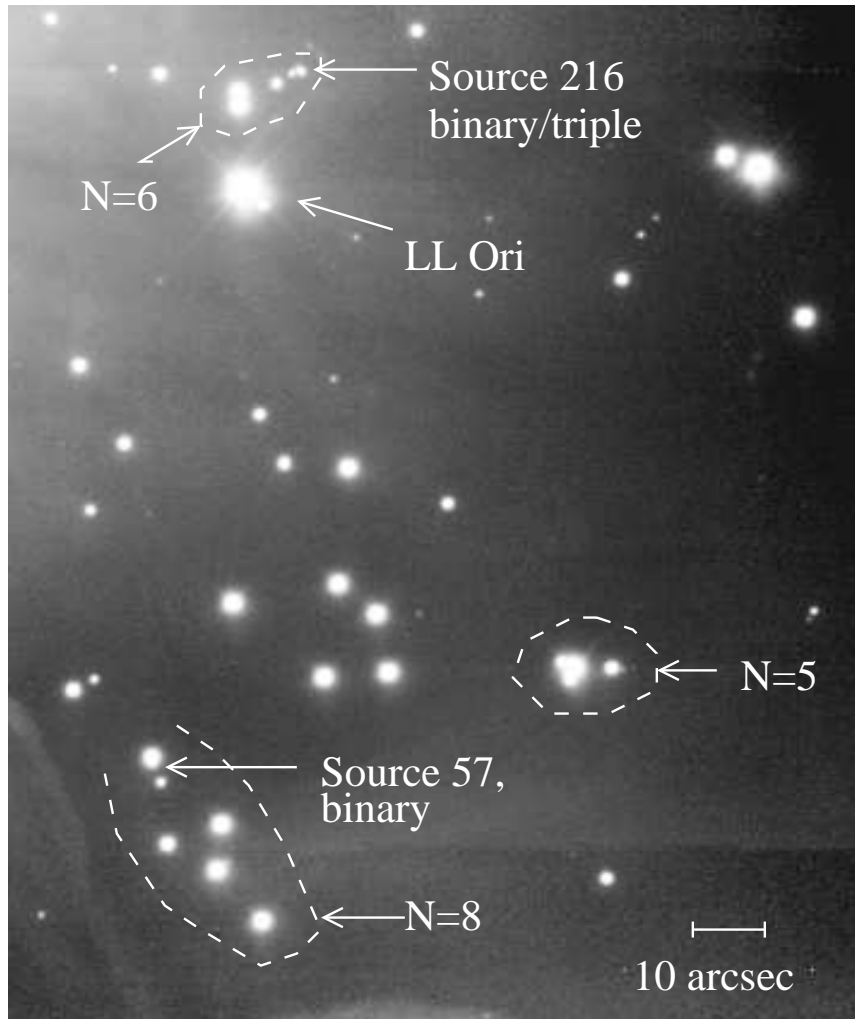


Figure 13. H band image of part of Field 2. Some possible small N associations are indicated with dashed lines, though the boundaries of these are often unclear. The location of 2 brown dwarf candidates located in apparent subarcsecond binaries are indicated, though these are not clearly separated from their brighter companions in this large scale view.

sured further from the cluster centre in the Subaru and Gemini datasets. It might be due to the higher stellar density at $\theta < 60''$, which leads to a greater frequency of close encounters capable of disrupting wide binaries with separations > 200 AU. Scally & Clarke (2001) calculated that such close encounters are rare in typical, less dense parts of the cluster. This explanation is supported by the observation that closer, more tightly bound stellar binaries $\theta \leq 0.35''$ do exist in this central region of the cluster, eg. Prosser et al.(1994), Petr et al.(1998).

The surface density in the Subaru sample region is $\Sigma = 7.3 \times 10^{-3} \text{arcsec}^{-2}$. It is sufficiently uniform (variations of $\pm 25\%$ seen in different 1arcmin^2 areas of the region) to be assumed uniform for our calculations of chance contamination. After accounting for selection effects and pairing with objects outside each subsample the expected number of objects found in a binary by chance alignment is 5.0 in the stellar subsample and 0.47 in the brown dwarf subsample. Given that 16 stars are observed in binaries in the stellar subsample the expected number of genuine binary members in the brown dwarf subsample would be 2.01 ± 1.42 if the incidence

of binarity and the detectability of binaries were the same as in the stellar subsample. However the Subaru brown dwarf subsample includes many sources near the sensitivity limit of that relatively shallow survey, so the sensitivity to brown dwarf binaries is only $\approx 75\%$ of the sensitivity in the stellar subsample (due to a reduction of a factor of approximately 2 in the sensitivity to fainter companions). Hence the expected number of genuine binary members is only 1.51 ± 1.23 if brown dwarf binaries are as common as stellar binaries. The expected chance alignment (an extra 0.47 sources) can be neglected in this subsample: it is known to be zero since no brown dwarf binaries are observed in the Subaru data. This indicates that the incidence of binarity is lower than in stars at the $1.23\text{-}\sigma$ level, which has a probability of 10.9% (one tail test). By itself this is a very low level of significance but taken together with the 9.0% probability from the independent Gemini sample it provides a fairly strong result with 99.0% confidence (one tail test), or 96.1% confidence in a 2 tail test.

Again, the significance of the result from the Subaru data is increased if the brown dwarf subsample is enlarged

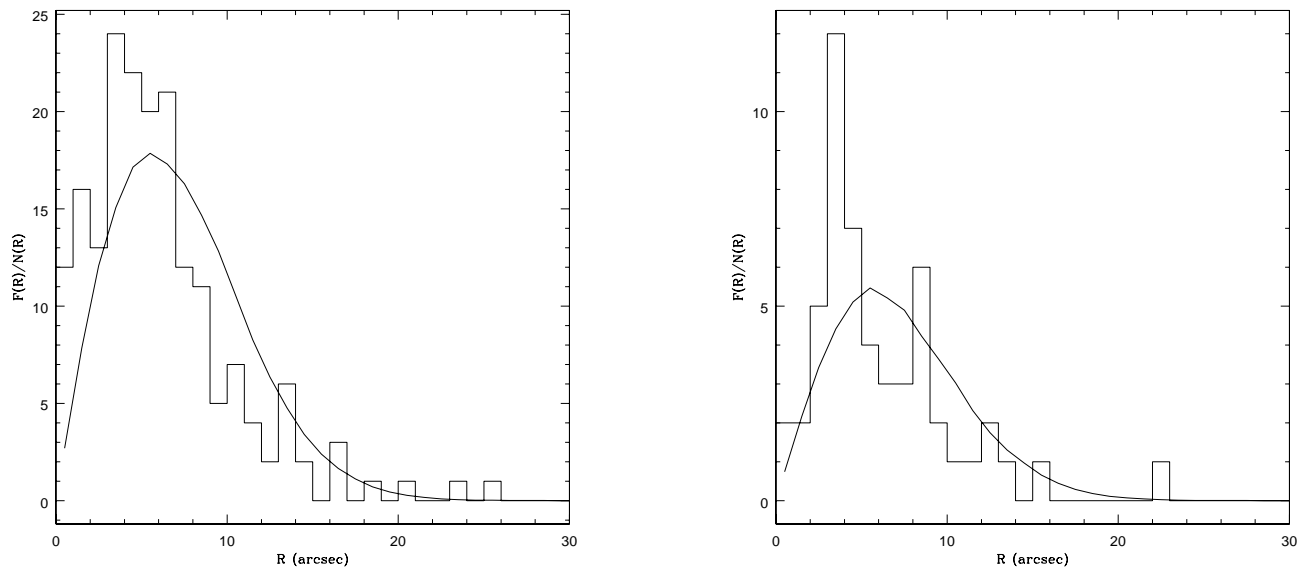


Figure 14. Nearest neighbour functions for the Gemini sources, correlating the stellar and substellar samples with all detected sources. (left) stars. (right) brown dwarfs. The curves represent the expected function for a random distribution. A slight excess over the random distribution is seen for stars at separations of 3-7 arcsec, supporting the impression of some small N groups. The brown dwarf histogram has more scatter but shows an excess of nearby companions at separations of 2-5 arcsec. These excesses appear to indicate the existence of small-N associations.

by including very low mass stars with $M < 0.1M_{\odot}$. In this case there are 293 sources in the stellar subsample and 76 in the low mass object subsample, which still contains no binary members. Performing the same type of calculation (and retaining the 75% sensitivity factor for the low mass subsample) the expected number of binary members in the low mass subsample is 2.24 ± 1.50 . The null detection of low mass binary members therefore has a 6.7% probability of occurring by chance. Combining this result with the Gemini result gives 99.7% confidence (one tail test) that the binary fraction is lower among sources with $M < 0.1M_{\odot}$, or 98.9% in a two tail test.

3.6.3 Discussion: binaries and associations

The apparent paucity of low mass sources in binary systems is interesting because it provides support for the ejected stellar embryo hypothesis of brown dwarf formation. The SPH simulation of Bate et al.(2003) predicts that $\sim 75\%$ of proto-brown dwarfs form via disc fragmentation and 25% form via fragmentation of filaments but in both cases it is the subsequent dynamical interaction and ejection from the gas reservoir that prevents the brown dwarfs from reaching stellar mass. In this scenario only a very small fraction of brown dwarfs would be expected to be binary, perhaps in cases where a tight binary proto-brown dwarf is ejected as a single unit from a high order multiple system (see Sterzik & Durisen 1998). As discussed earlier wide binaries (> 300 AU in the cluster centre) are thought to have been disrupted by close stellar encounters. However, in the less dense outer region of the cluster observed here only a small fraction of sources are likely to have had an encounter at < 400 AU distance with a star that did not form in the same group (see Scally & Clarke 2001) so the observed incidence of binarity is (to first order) primordial.

There have in recent years been several investigations

of the binary fraction in brown dwarfs in the local field and in older galactic clusters such as the Pleiades (eg. Pinfield et al. 2003; Reiners & Basri 2005; Close et al. 2003; Burgasser et al. 2003; Gizis et al. 2003; Martin et al. 2003; Reid et al. 2001; Koerner et al. 1999; Potter et al. 2002). These surveys have established that wide brown dwarf-brown dwarf binaries (> 20 AU) are extremely rare and the overall distribution of orbital semi-major axes peaks at much smaller radii than in stars. Wide binaries consisting of a solar type star and a brown dwarf may be more common however (eg. Gizis et al. 2001; Metchev & Hillenbrand 2004; Volk et al.2003; McCaughrean et al. 2004). Earlier surveys of stellar binarity (eg. Duquennoy & Mayor 1991; Fischer & Marcy 1992) showed that the binary fraction decreases slightly as a function of the mass of the primary from $\sim 57\%$ in solar type stars to $\sim 35\%$ in early M types. At separations $> 1 - 2$ AU the direct imaging surveys listed above found a binary fraction of $\sim 15\%$ in late M and L types, and perhaps even less in T types. However, Pinfield et al.(2003) detected a much higher incidence of binarity in Pleiades brown dwarfs (30-50%) by detecting binaries photometrically. This suggested that either there should be many unresolved binaries in the local field or the Pleiades population is unusual. The former conclusion is given some support by the recently reported detection of a few close substellar spectroscopic binaries (Reiners & Basri 2005) and the previous detection of one such object by Basri & Martin (1999).

The low incidence of wide binaries containing brown dwarfs in Orion at separations $r \geq 150$ AU is unsurprising given the total absence of such objects in the local field population. However the significance of this result is that it holds true for this primordial population and is therefore likely to be a product of the star formation process. Note that in the samples described here brown dwarfs can only be detected in binaries where the primary is a low mass star or brown dwarf, owing to the limited dynamic range at separa-

tions $\theta < 0.79$ arcsec. It is perhaps more surprising that at least 1 brown dwarf (Source 216) is detected in a probable wide star/brown dwarf binary with a luminosity contrast of ~ 1 magnitude. Neither component of the system shows any sign of an (H-K) excess. Only one wide brown dwarf binary pair has been reported in the literature to date, an $r = 240$ AU pair in the Chamaeleon star formation region (Luhman 2004), though there is no firm evidence that this is a bound system. In the case of the Orion binary brown dwarf candidate, Source 216, it may be significant that it is located in an apparent triple system around which is a small N subgroup of perhaps 6 to 10 sources (see Figure 13). The tertiary component is $1.2''$ distant from the nearest component of the binary. This subgroup is the active region of recent star formation associated with LL Ori (see Bally, O'Dell & McCaughrean 1999), in which several stellar outflows are apparent, confirming the extreme youth of the group.

Another brown dwarf candidate from the Gemini dataset, Source 57, is also observed in a possible binary with a 0.93 arcsec separation. It is also a member of an apparent small-N subgroup in Field 2, with about 8 members. The subgroup containing Source 57 contains a second brown dwarf (Source 40) located only 2 arcsec from a bright star, and there are other instances of possible brown dwarf binaries in Field 2 in the $\theta = 1 - 4''$ separation range. These apparent binaries and small-N groupings appear more significant in a visual inspection of Field 2 (see Figure 13) than they would in other parts of the survey region due to the slightly lower source density there.

The reality of the small N groupings and $\theta = 1 - 4$ arcsec star + brown dwarf binaries is given statistical support by the two point correlation functions in Figure 12 and the nearest neighbour distributions in Figure 14. At $\theta < 6$ arcsec Figure 12 shows that $w(\theta)$ is generally slightly above zero in both the stellar and substellar populations, suggesting some tendency for sources to form in small groups. The nearest neighbour distributions plotted in Figure 14 support this impression, particularly for the stellar population where the histogram consistently lies above the solid curve representing the expected number of nearest neighbours per bin for a random distribution at separations of 3 to 7 arcsec (1300 to 3000 AU). The probability of such a chance excursion occurring in these 4 bins is only 0.12% (two tail test). The nearest neighbour distribution for brown dwarfs shows more scatter about the curve for a random distribution due to the smaller sample size. However there is an excess in the distribution at $\theta = 2 - 5$ arcsec, which has a 0.07% probability of occurring by chance in these 3 bins (two tail test) and only a $\sim 0.25\%$ probability of occurring somewhere in the plotted distribution.

It therefore seems very probable that a significant fraction of Trapezium brown dwarfs and stars have formed in small-N associations. We note that the fraction of sources presently appearing to be in such associations is small. The simulations of Scally & Clarke (2002) indicate that subclustering is removed within a few Myr in dense star forming regions such as the Trapezium Cluster. It is therefore unsurprising that the apparent associations are only intact and observable in the sparse outer regions of the cluster that are observed here. Bate et al.(1998) found no sign of such sub clustering in the data of McCaughrean et al.(1996) and

Prosser et al.(1994) for the central regions. Their plot of the MSDC function for the large area survey of Jones & Walker (1988) did reveal a slightly higher incidence of companions at separations of a few arcsec which might be interpreted as evidence of small-N clustering. However, the shallow optical survey of Jones & Walker was not optimal for detection of clusters with low mass members. Bate et al.(1998) emphasised the difficulties in interpreting the larger scale slope: $MSDC(\theta) \propto \theta^{-0.16 \pm 0.01}$.

Following the hypothesis of Reipurth & Clarke (2001) we suggest that these associations may be dynamically unstable. It is possible that some members of the apparent associations are in the process of being ejected. However, the observed associations appear to suffer little extinction and may be too mature for future ejections to aid in the production of brown dwarfs. It is of course very possible that the 2 brown dwarfs in apparent sub-arcsecond binaries are chance associations caused by projection effects (most likely projection of cluster members rather than background stars for these fairly bright sources). The probability of a chance association is $\approx 17\%$ for Source 216 and close to $\approx 30\%$ for Source 57. The main point is that there is a statistically significant excess of close neighbours at separations $\theta < 5$ arcsec in the nearest neighbour distribution. Kinematic measurements will be needed to explore the nature of these apparent associations and wide binaries.

4 DISCUSSION OF NEBULAE, TRAILS AND FILAMENTS

4.1 Trails and star forming filaments?

In this section we present a speculative discussion of the luminous trails and filaments with which some sources seem to be associated. In Lucas, Roche & Riddick (2003) we noted that a minority of the low luminosity point sources in Field 1 appear to have short (~ 4 arcsec) trails of continuum radiation extending away from them, usually in the direction of the cluster centre. This orientation rules out identifying them as photoevaporating 'proplyds', the mainly neutral cometary nebulae pointing away from the cluster centre observed by eg. O'Dell & Wen (1994) in Orion and Hester et al.(1996) in M16. We speculated that they might be associated with source motion away from the cluster core. The Trapezium cluster is pervaded by highly structured nebulosity, so it would be preferable to conduct a statistical analysis to determine whether the apparent association of the trails with a few point sources is genuine. However, on inspection of the data we were unable to find a useful definition of which patches of nebulosity with no point source association might constitute a trail. In consequence we limit this discussion to reporting the following observational features which may be of interest.

- Trails. A total of 8 sources in Table 2 appear to lie at one end of a short and narrow 'trail' of nebulosity (see Figure 15). There is no sign of the V-shaped bow shocks which might be expected if these are H_2 outflow features, and in some cases the trails are as bright at H band as at K band. Of these, 3/8 are PMCs (Source 64=080-646, Source 109=199-617 and Source 173=092-532), 3/8 are brown dwarf candidates (Source 103=179-621, Source 370=044-219 and Source

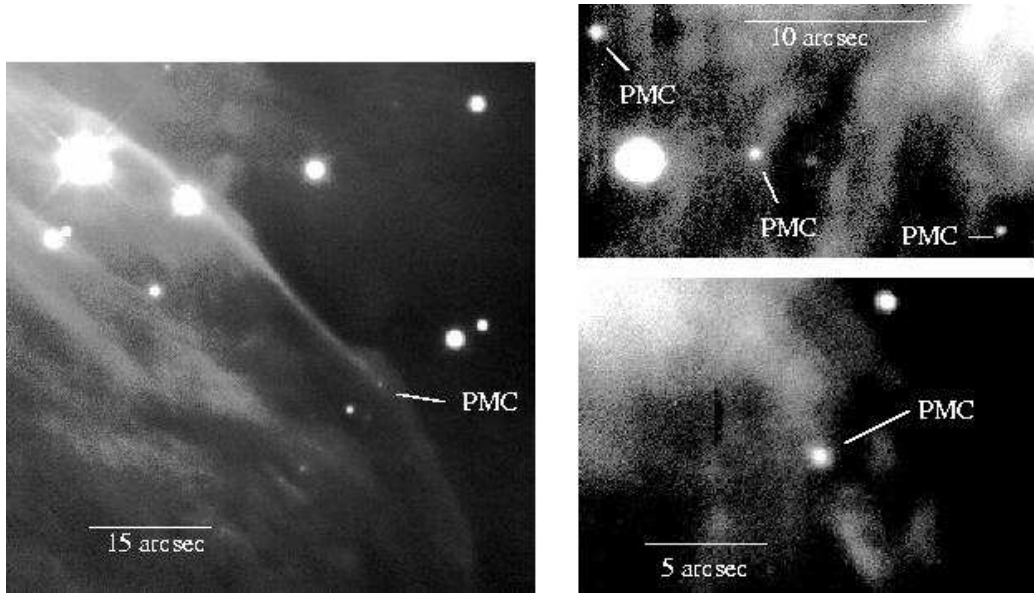


Figure 15. 'Trails' associated with 3 PMCs. The very long trail in the left panel appears similar to the filaments of nebulosity shown in Figure 16, except that a PMC (Source 64) lies at one end. The upper right panel shows 3 PMCs in a small area of Field 1. The central PMC (Source 109) lies at one end of a short streak of nebulosity and also exhibits a K band excess of 0.3 magnitudes.

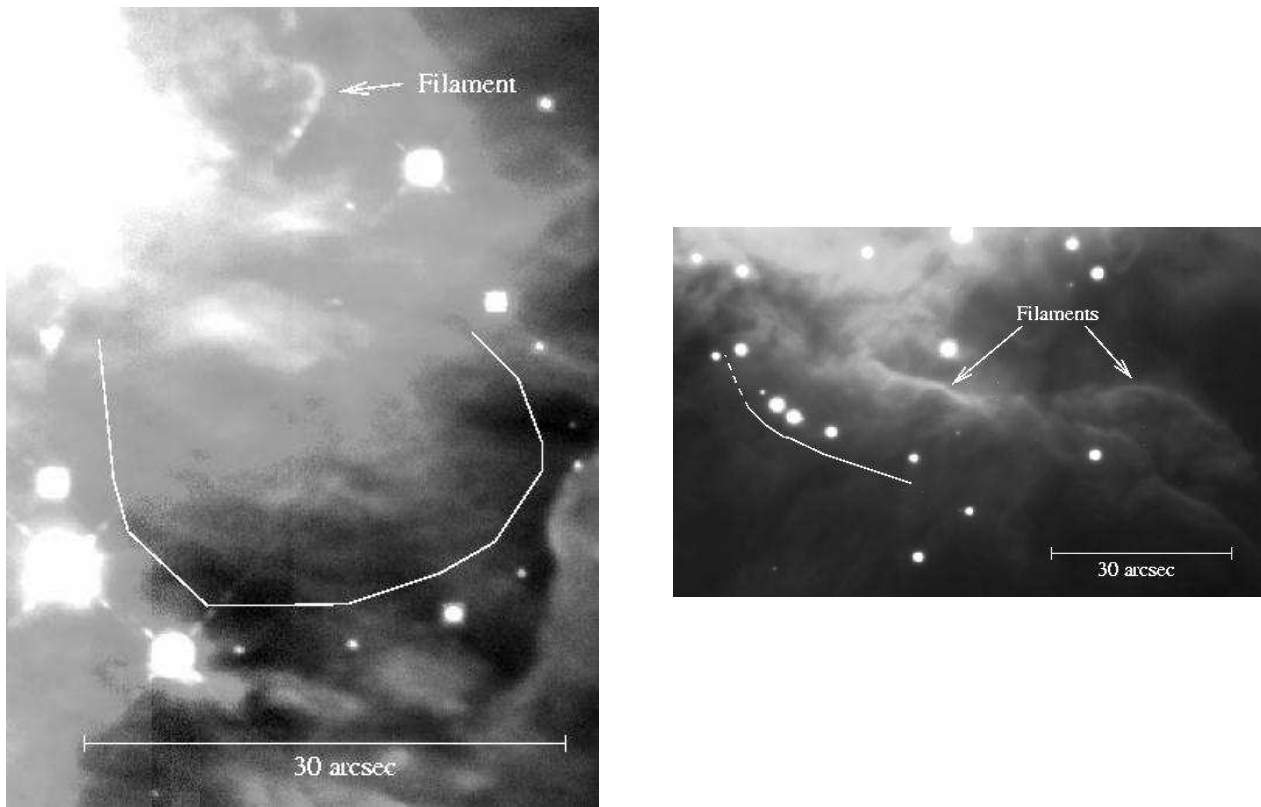


Figure 16. Filaments and associations. Possible associations are illustrated with curved white lines (see text). In the upper part of the left panel a short curved filament is seen. This filament contains a single point source, Source 329 (see text) and may be dominated by H_2 emission. The right panel shows filaments within the Orion Bar.

128=157-602) and 2/8 are of stellar mass (Source 46=139-701 and Source 252=105-417). The trails of the 3 PMCs all point in the approximate direction of the cluster centre (within 30°) and 3 of the more luminous sources (Sources 103, 128 and 252) share this characteristic. One of the two with a different direction, Source 370, has a trail which appears narrow and linear in our UKIRT data from LR00 at H band, but the Gemini data reveals a fainter patch of more diffuse nebulosity associated with the source which make the designation as a trail questionable. The other, Source 46, is a J mag=20 stellar mass source with high extinction ($A_V = 40$) that has a 4 arcsec (2000 AU) trail which is only visible at J band, being swamped by the wings of the stellar profile at H and K. Similar faint trails would go undetected in most stellar mass sources with lower extinction. If any of these trails are associated with source motion they might either be 'light pipes' of relatively low extinction internally illuminated by the associated source, or local density enhancements which are externally illuminated by the ambient radiation field.

- Filaments. Several curved filaments are observed in this survey, some with no associated point source. Examples are illustrated in Figures 15 and 16. These filaments are not obviously associated with any high luminosity source that might power an outflow. We speculate that some of them might be dense star forming filaments of the type produced in SPH simulations of star formation in a turbulent gas cloud (eg. Bate, Bonnell & Bromm 2003). The filaments in the left panel of Figure 15 and the right panel of Figure 16 appear bright at J, H and K, while the one in the left panel of Figure 16 is bright only at K band, suggesting that it may be H_2 emission. This latter filament is a highly curved and ~ 10 arcsec long. It runs through an unresolved object, Source 329 (=093-255). The filament includes several marginally resolved knots or point sources seen only at K band, which may be knots of H_2 emission. Source 329 might also be merely a gaseous knot but it is included in Table 2 as a stellar source since it is detected at J, H and K, though it was not sufficiently well resolved for photometry at H band. The filament shown in the left panel of Figure 15 is the 'trail' associated with Source 64 that was described above. However its great length (~ 1 arcminute ≈ 25000 AU) and curvature suggest that it is perhaps more likely to be a product of the turbulent star formation process than gas associated with a single very low mass source. High resolution observations in the millimetre, submillimetre or far infrared wavebands could test whether any of these filaments are in fact composed of cold and very dense gas. The submm data shown in Figures 1 and 7 reveals that the bright Orion Bar, which appears as a giant, externally excited luminous filament in the infrared, has an optical density approaching $A_V = 100$ in places, so the existence of smaller high density structures that were unresolved by SCUBA is possible.

- Small-N associations. We noted in the previous section that there are several apparent small-N associations which appear at a statistically significant level in the nearest neighbour function. In the context of the possible observation of dense star forming filaments we note that two suggestive string-like groups of stars are seen in this survey (see Figure 16), both of which lie close to filamentary nebulosities. It is likely that these groupings are simply a chance temporary alignment of sources whose origins are unconnected. How-

ever, it is possible that these apparent associations are relics of a filamentary mode of star formation, being cases where the filament has been dispersed and is no longer observable. Most Trapezium cluster members have a random velocity dispersion of ~ 3.5 kms $^{-1}$ in the plane of the sky (Jones & Walker 1988). Hence, such apparent associations cannot survive more than a few thousand years if their members share this random velocity dispersion. However if sources formed in a filament retain a common proper motion then the spatial association might remain detectable for a few $\times 10^4$ yr, which is perhaps the youngest conceivable age for these sources. On a larger scale it is widely accepted that many of the YSOs in the nearby Taurus-Auriga cloud complex formed in filaments perpendicular to the local magnetic field which are no longer directly observable (see Menard & Duchene 2004 and references therein). The existence of these possible associations might be tested by spectroscopy, searching for indicators of extreme youth, or a high precision proper motion survey.

4.2 Bipolar Nebulae

We report the discovery of two bipolar nebulae with bright central sources in Field 3 (see Figure 17) which are included in Table 2. Both these sources (Source 321 (057-305) and Source 369 (013-220)) have previously been imaged in the UKIRT data of LR00 and Source 321 was also imaged by both Hillenbrand & Carpenter (2000) and Muench et al.(2002). In those surveys these nebulae went unremarked: in the UKIRT data both appear merely as an elongated nebula associated with the central source. However, the high resolution of the Gemini K band data in Field 3 (0.36 arcsec) reveals the hourglass-like indentations in the nebulosity on either side of the central source that is commonly observed in equatorially condensed nebulae whose axis of rotational symmetry lies close to the plane of the sky. These systems are likely to be Class I YSOs similar to those observed in nearby low mass star formation regions.

Source 321 is an unresolved source seen at J, H and K at the centre of the surrounding nebula. At J and H band the contrast with the surrounding nebula is low so it is possible that it is merely a well defined scattering peak. At K band the point source is much brighter than the surrounding nebula, indicating that a protostar is being observed directly (perhaps with a contribution from hot circumstellar dust close to the star). Source 321 appears to be similar to the famous Serpens Reflection Nebula (SRN, also known as Serpens SVS2), in which the central source is visible at near infrared wavelengths despite the presence of relatively high extinction in the equatorial plane. Most YSOs with a bipolar nebulae have a dark central lane which completely obscures the central source, even in more evolved Class II systems such as HK Tau b (Stapelfeldt et al. 1998). It is unclear why the central source is visible in some bipolar systems. It is possible that the circumstellar matter is disturbed by an outflow from the YSO, allowing light to shine through a hole in the matter distribution. Another possibility is that these systems have unusually small accretion discs surrounded by a circumstellar envelope which has only a weak vertical density gradient (perhaps due to a low systemic angular momentum). A small disc ($r \lesssim 100$ AU) in vertical hydrostatic equilibrium would have too small a scale

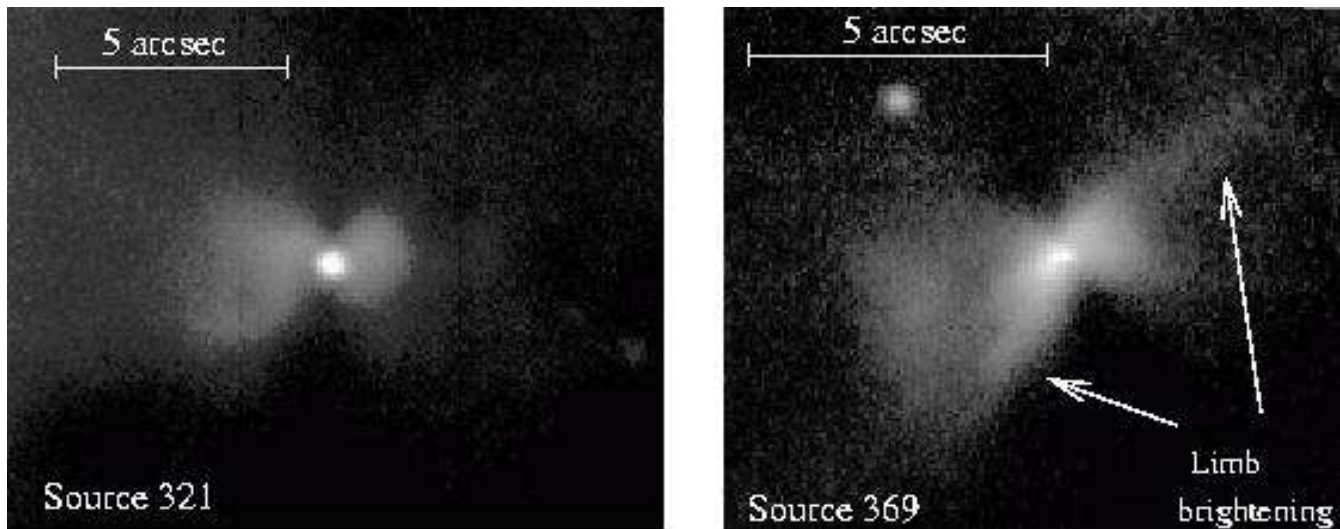


Figure 17. K band images of Bipolar Nebulae. (left) Source 321 (057-305), (right) Source 369 (013-220). North is up and east is to the left. Source 321 is also visible at K, H and J in Figure 11.

height to block light from the central source unless the disc axis is almost exactly in the plane of the sky.

By contrast, Source 369 is marginally resolved at all 3 wavelengths, indicating that this probably is a scattering peak and the protostar is obscured from view. The cavity walls appear to be limb brightened (a well known geometric effect) but interestingly this is obvious only for the north western and south eastern walls. This phenomenon has been explained using a tilted disc model (Gledhill 1991) but might also be due to shadowing of the fainter cavity walls by irregularly distributed matter within the bipolar cavity.

5 CONCLUSIONS

This very deep survey of the outer parts of the Trapezium Cluster with Gemini South/Flamingos has allowed us to produce an extinction limited sample ($A_V < 5$) complete to a mass of approximately $0.005M_\odot$ ($5 M_{Jup}$), for sources with an age of 1 Myr. The initial mass function appears to drop by a factor of ~ 2 at the deuterium burning threshold, although this may be due to a smooth decline in the mass function at planetary masses which appears abrupt because of the small sample size.

An upper limit of 13% is placed on the number fraction of planetary mass objects (PMOs) in the range $3-13 M_{Jup}$, based on the assumption that all candidates are genuine 1 Myr old cluster members. However, background contamination appears to rise steeply at luminosities corresponding to $M < 5 M_{Jup}$, indicating that the true number fraction of PMOs is probably $< 10\%$. Spectroscopic follow up of a large sample of candidates will be required to establish the true number fraction and test whether there is a cut off as predicted by the theory of opacity limited fragmentation. Our attempt to test for (H-K) excesses in substellar candidates produced inconclusive results owing to uncertainties in

the intrinsic colours of young brown dwarf photospheres and the limited photometric precision of the dataset. However, in this survey region we find no sign of the proplyds with bluer (H-K) colours than the isochrone which were detected by Muench et al. (2001) nearer the cluster centre. This may be due to a slightly greater age for sources in the outer part of the cluster.

Analysis of the spatial distribution of stars and brown dwarf candidates suggests that brown dwarfs and very low mass stars ($M < 0.1M_\odot$) are less likely than more massive stars to have wide (> 150 AU) binary companions. This result has modest statistical significance in our data (96% in a one tail test) but is supported at 93% confidence by analysis of an completely independent sample taken from the Subaru data. Intriguingly, there is a statistically very significant excess of both stars and brown dwarfs with small separations from each other (< 6 arcsec or 2600 AU). This appears to be due to the presence of small N subgroups, which are likely to be dynamically unstable in the long term. These results might be interpreted as providing support for the 'ejected stellar embryo' hypothesis for brown dwarf formation (Reipurth & Clarke 2001).

6 ACKNOWLEDGEMENTS

We are very grateful to the Gemini staff who made the observations and to the University of Florida team who provided Flamingos I. This paper is based on observations obtained in programme GS-2001B-Q-11 at the Gemini Observatory, which is operated by the Association of Universities for Research in Astronomy, Inc., under a cooperative agreement with the NSF on behalf of the Gemini partnership: the National Science Foundation (USA), the Particle Physics and Astronomy Research Council (UK), the National Research Council (Canada), CONICYT (Chile), the Australian Re-

search Council (Australia), CNPq (Brazil) and CONICET (Argentina). We also wish to thank Professor Norio Kaifu for permitting use of the Subaru Telescope first light data and Dr Doug Johnstone of the Canadian National Research Council for providing the submm data used to illustrate the background extinction. PWL is supported by PPARC via an Advanced Fellowship at the University of Hertfordshire. Finally we thanks the anonymous referee for a helpful report.

7 REFERENCES

Baraffe I., Chabrier G., Allard F., Hauschildt P.H. 1998, *A&A*, 337, 403
 Baraffe I., Chabrier G., Allard F., Hauschildt P.H. 2002, *A&A*, 382, 563
 Basri G., Martin E.L. 1999 *AJ*, 118, 2460
 Bate M.R., Clarke C.J., McCaughrean M.J. 1998, *MNRAS* 297, 1163
 Bate M.R., Bonnell I.A. Bromm V. 2003, *MNRAS* 339, 577
 Bjar V.J.S., Martn E.L., Zapatero Osorio, M.R. Rebolo R., Barrado y Navascus D., Bailer-Jones C.A.L., Mundt R., Baraffe I., Chabrier C., Allard F. 2001, *ApJ* 556, 830
 Boyd D.F.A., Whitworth A.P. 2005, *A&A* 430, 1059
 Burgasser A.J., Kirkpatrick J.D., Reid I.N., Brown M.E., Miskey C.L., Gizis J.E. 2003, *ApJ* 586, 512
 Burgasser A.J. 2004, *ApJS* 155, 191
 Cardelli J.A., Clayton G.C., Mathis J.S., 1989, *ApJ*, 345,245
 Carpenter J.M., Hillenbrand L.A., Skrutskie M.F. 2001, *AJ*, 121, 316
 Carpenter J.M. 2003, on-line at <http://www.astro.caltech.edu/~jmc/2mass/v3/transformations/>
 Chabrier G., Baraffe I., Allard F., Hauschildt P. 2000, *ApJ* 542, 464
 Close L.M., Siegler N., Freed M., Biller B. 2003, *ApJ* 587, 407
 Cohen J.G., Frogel J.A., Persson S.E., Elias J.H. 1981, *ApJ* 249, 500
 Dahn C.C., Harris H.C., Vrba F.J., Guetter H.H., Canzian B., Henden A.A., Levine S.E., Luginbuhl C.B., +10 authors, 2002, *AJ*, 124, 1170
 D’Antona F., Mazzitelli I. 1997, *Mem. Soc. Astron. Ital.* 68, 807
 Elston R., 1998, *Proc. SPIE* 3354, 404
 Gizis J.E., Kirkpatrick J.D., Burgasser A., Reid I.N., Monet D.G., Liebert J., Wilson J.C. 2001, *ApJ* 551, L163
 Gizis J.E., Reid I.N., Knapp G.R., Liebert J., Kirkpatrick J.D., Koerner D.W., Burgasser A.J. 2003, *AJ* 125, 3302
 de Grijs, R.; Johnson, R. A.; Gilmore, G. F.; Frayn, C. M. 2002a, 331, 228
 de Grijs, R.; Gilmore, G. F.; Johnson, R. A.; Mackey, A. D. 2002b, 331, 245
 de Grijs, R.; Gilmore, G. F.; Mackey, A. D.; Wilkinson, M. I.; Beaulieu, S. F.; Johnson, R. A.; Santiago, B. X. 2002c, *MNRAS* 337, 597
 Hillenbrand L.A. 1997, *AJ* 113,1733
 Hillenbrand L.A., Carpenter J.M. 2000, *ApJ* 540, 236 (HC)
 Hillenbrand L.A. & White R., 2004, *ApJ* 604, 741
 Johnstone D., Bally J. 1999, *ApJ* 510, L49
 Jones B.F., Walker M.F. 1988, *AJ* 95, 1755
 Kaas, A. 1999, *AJ* 118, 558

Kaifu N., Ususda T., Hayashi S.S., Itoh Y., Akiyama M., Yamashita T., Nakajima Y., Tamura M. + 85 authors, 2000, *PASJ* 52, 1
 Knapp G.R., Leggett S.K., Fan X., Marley M.S., Geballe T.R., Golimowski D.A., Finkbeiner D., Gunn J.E., + 21 coauthors 2004, 127, 3353
 Koerner D.W., Jensen E.L.N., Cruz K., Guild T.B., Gul-tekin K. 1999, *ApJ* 526, L25
 Kroupa P., Petr M.G., & McCaughrean M.J. 1999, *New Astronomy* 4, 495
 Kroupa P., Bouvier J. 2003, *MNRAS* 346, 369
 Lada C.J., Muench A.A., Lada E.A., Alves J.F. 2004, *AJ*, 128, 1254
 Leggett S.K., Allard F., Geballe T.R., Hauschildt P.H., Schweitzer A. 2001, *ApJ* 548, 908
 Liu, M. C., Najita, J., Tokunaga, A. T. 2003, *ApJ*, 585, 372
 Low C., Lynden-Bell D., 1976, *MNRAS* 176, 367
 Lucas P.W., Roche P.F. 2000, *MNRAS* 314, 858
 Lucas P.W., Roche P.F., Allard F., Hauschildt P.H. 2001, *MNRAS* 326, 695
 Lucas P.W., Roche P.F. & Riddick F.C. 2003, in *proc IAU Symposium* 211, ‘Brown Dwarfs’, p63, ed. E.L. Martin, ASP, San Francisco
 Luhman K.L., Rieke G.H., Young E.T., Cotera A.S., Chen H., Rieke M.J., Schneider G., Thompson R.I. 2000 *ApJ* 540, 1016
 Luhman K.L. 2004, *ApJ* 614, 398
 Martin E.L., Brandner W., Bouvier J., Luhman K.L., Stauffer J., Basri G., Zapatero Osorio M.R., Barrado y Navascues D. 2000, *ApJ* 543, 299
 Masunaga H., Inutsuka S.-I. 1999, *ApJ* 510, 822
 McCaughrean M., Zinnecker H., Rayner J., Stauffer J. 1995, in “The Bottom of the Main Sequence and Beyond”, ed. C. Tinney, p209, (Berlin: Springer) McCaughrean M.J., Close L.M., Scholz R.-D., Lenzen R., Biller B., Brandner W., Hartung M., Lodieu N. 2004, *A&A*, 413, 1029
 Menard F., Duchene G. 2004, *A&A* 425, 973
 Metchev S., Hillenbrand L. 2004, *Mem. Soc. Astron. Ital.*, 73, 23
 Mohanty S., Basri G., Jayawardhana R., Allard F., Hauschildt P., Ardila D., 2004, *ApJ* 609, 854
 Mohanty S., Jayawardhana R., Basri G. 2004, *ApJ* 609, 885
 Mohanty S., Jayawardhana R., Basri G. 2005, *ApJ* (in press), astro-ph/0502155
 Muench A.A., Alves J., Lada C.J., Lada E.A. 2001, *ApJ* 558, L51
 Muench A.A., Lada E.A., Lada C.J., Alves, J. 2002, *ApJ* 573, 366
 Muench A.A., Lada E.A., Lada C.J., Elston R.J., Alves J.F., Horrobin M., Huard T.H., Levine J.L., Raines S.N., Roman-Zuniga C. 2003, *AJ* 125, 2029
 Oasa Y., 2003, in *proc IAU Symposium* 211 ‘Brown Dwarfs’, p91, ed. E.L. Martin, ASP, San Francisco
 O’Dell C.R., Wen Z. 1994, *ApJ* 436, 194
 O’Dell C.R., Yusef-Zadeh F, 2000, *AJ*, 120, 382
 Petr M.G., Coude du Foresto V., Beckwith S.V.W., Richichi A., McCaughrean M.J. 1998, *ApJ* 500, 825
 Pinfield D.J., Dobbie P.D., Jameson R.F., Steele I.A., Jones H.R.A., Katsiyannis A.C. 2003, *MNRAS* 342, 1241
 Potter D., Martin E.L., Cushing M.C., Badoz P., Brandner W., Guyon O., Neuhauser R. 2002, *ApJ* 567, L133
 Prosser C.F., Stauffer J.R., Hartmann L., Soderblom D.R.,

- Jones B.F., Werner M.W., McCaughrean M.J. 1994, ApJ 421, 517
- Rees M.J. 1976, MNRAS 176, 483 Reid I.N., Gizis J.E., Kirkpatrick J.D., Koerner D.W. 2001, AJ 121, 489
- Reiners A., Basri G. 2005, in proc 'The 13th Cambridge Conference on Cool Stars, Stellar Systems and the Sun' (in press)
- Reipurth B., Clarke C. 2001, AJ 122, 432
- Riddick F.C., Roche P.F., Lucas P.W., 2005, in proc. 'IMF@50', Kluwer Academic Publishers, Astrophysics and Space Library series, eds. E. Corbelli, F. Palla, and H. Zinnecker, (in press)
- Rieke G.H., Lebofsky M.J. 1985, ApJ, 288, 618
- Robberto M., Soderblom D.R., O'Dell C.R., Stassun K.G., Hillenbrand L.A., Simon, M., Feigelson E.D., Najita J., Stauffer J., Meyer M. + 12 authors 2004, AAS 205, 117.03
- Scally A., Clarke, C. 2001, MNRAS 325, 449
- Scally A., Clarke, C. 2002, MNRAS 334, 156
- Silk J. 1977, ApJ 214, 152
- Simon M. 1997, ApJ 482, L81
- Slesnick C.L., Hillenbrand L.A., Carpenter J.M. 2004, ApJ 610, 1045
- Stapelfeldt K.R., Krist J.E., Menard F., Bouvier J., Padgett D.L., Burrows C.J. 1998, ApJ 502, L65
- Sterzik M.F., Durisen R.H., 1998 A&A 339, 95
- Tokunaga A.T., 2000, in Allen's Astrophysical Quantities; ed. A.Cox, AIP Press, New York
- Volk K., Blum R., Walker G., Puxley P., 2003, IAU Circ., 8188, 2
- Walker C., Wood K., Lada C.J., Robitaille T., Bjorkman J.E., Whitney B. 2004 ApJ 351, 607
- Whitworth A.P., Zinnecker H. 2004, A&A 427, 299

Table 1 - Observational details.

Dataset	FWHM ^a (arcsec)	Integration time (s)	Time on source (s)	Origin of zero point
Field 1: K	0.51	20	3140	Hillenbrand & Carpenter (2000)
Field 1: H	0.46	30	3240	2MASS 2nd Release
Field 1: J	0.41	60	6900	2MASS 2nd Release
Field 2: K	0.55	60	3600	2MASS 2nd Release
Field 2: H	0.59	60	2820	2MASS All Sky
Field 2: J	0.58	120	6960	2MASS All Sky
Field 3: K	0.36	60	3480	Gemini standard
Field 3: H	0.59	60	3600	2MASS All Sky
Field 3: J	0.53	120	8040	2MASS All Sky

Notes: (a) This column gives the full width half maximum of point sources in the coadded datasets.

Table 2 - Source catalogue.

Source Number	Coordinate based ID	RA ^a (J2000)	Dec (J2000)	K ^b	H	J	Flag ^c	Origin ^d of Flux
1	154-747	35 15.390	27 47.11	11.06	12.41	14.89		0,0,0
2	222-745	35 22.192	27 44.84	14.30	15.33	16.11		0,0,0
3	034-745	35 3.450	27 44.54	16.09	-1.00	-1.00		0,0,0
4	213-739	35 21.279	27 38.78	12.11	12.81	13.46		0,0,0
5	152-738	35 15.211	27 37.71	14.40	15.73	16.92		0,0,0
6	138-737	35 13.818	27 36.69	11.42	11.90	12.75		0,0,0
7	071-736	35 7.147	27 36.41	18.44	-1.00	-1.00		0,0,0
8	208-736	35 20.829	27 36.20	16.56	17.45	18.28	HJ	0,0,0

Notes: (a) The RA and Dec are given in minutes and seconds east of 05h 00m 00s and arcminutes and arcseconds south of -5 degrees. Estimated precision is 0.5 arcseconds.

(b) Sources not detected in a passband have the following dummy values: 0.00 for undetected sources; -1.00 for sources off the edge of the data mosaic; -2.00 for saturated sources not seen in other surveys; -3.00 for binaries unresolved in some passbands.

(c) Highly uncertain fluxes (> 0.2 mag) are indicated by letters in this column denoting the passband(s) with uncertain flux. (d) Sources in general have fluxes drawn from one or more datasets, indicated separately for the K, H and J fluxes in that order. The source is indicated by the following key. 0: this survey. 1: Lucas et al.(2001); 2: the 2MASS All Sky Survey; 3: the 2MASS 2nd Incremental Data Release; 4: Hillenbrand & Carpenter (2000); 5: Muench et al.(2002).

Table 3 - Binaries detected by Gemini and Subaru

ID ^a	RA ^b	Dec	Separation (")	Comments
Gemini sources				
268, 271	05 35 07.65	-5 24 00.7	0.49	
277, 278	05 35 09.68	-5 23 55.9	0.48	
288, 291	05 34 59.32	-5 23 32.9	0.54	
375, 376	05 35 06.20	-5 22 12.3	0.39	
221, 222	05 35 16.19	-5 24 56.4	0.51	
213, 216	05 35 05.01	-5 25 00.9	0.72	216 is a brown dwarf candidate
265 ^c	05 35 08.23	-5 24 03.2	~ 0.40	Saturated source.
Subaru sources				
217-147	05 35 21.7	-5 21 47	~ 0.6	saturated source.
205-330	05 35 20.5	-5 23 30	~ 0.6	saturated source.
184-427	05 35 18.4	-5 24 27	0.39	
163-210	05 35 16.3	-5 22 10	0.40	
129-135	05 35 12.9	-5 21 35	0.67	
231-501	05 35 23.1	-5 25 01	0.66	near θ_2 Ori
154-225	05 35 15.4	-5 22 25	0.67	
183-438	05 35 18.3	-5 24 38	0.67	

Notes:

(a) Source IDs from Table 2 are given for the Gemini binary members. Coordinate based designations are used for the Subaru binaries.

(b) J2000.0 coordinates are given for the primary.

(c) Source 265 is a binary which is listed singly in Table 2. Separate photometry was not possible since both components were saturated and barely resolved.