



## VVV High Proper Motion Survey

M. Gromadzki<sup>1</sup>, R. Kurtev<sup>1</sup>, S. Folkes<sup>1,2</sup>, J. C. Beamín<sup>3</sup>, K. Peña Ramírez<sup>4</sup>,  
J. Borissova<sup>1</sup>, D. Pinfield<sup>2</sup>, H. Jones<sup>2</sup>, D. Minniti<sup>3,5,6</sup> and V. D. Ivanov<sup>7</sup>

<sup>1</sup> Departamento de Física y Astronomía, Facultad de Ciencias, Universidad de Valparaíso, Ave. Gran Bretaña 1111, Playa Ancha, Valparaíso, Chile e-mail: mariusz.gromadzki@uv.cl

<sup>2</sup> Centre for Astrophysics Research, Science and Technology Research Institute, University of Hertfordshire, Hatfield AL10 9AB, United Kingdom

<sup>3</sup> Instituto de Astrofísica, Facultad de Física, Pontificia Universidad Católica de Chile, Avda. Vicuña Mackenna 4860, 782-0436 Macul, Santiago, Chile

<sup>4</sup> Instituto de Astrofísica de Canarias, C/. Vía Láctea s/n, E-38205 La Laguna, Tenerife, Spain

<sup>5</sup> The Milky Way Millennium Nucleus, Avda. Vicuña Mackenna 4860, 782-0436 Macul, Santiago, Chile

<sup>6</sup> Vatican Observatory, Vatican City State V-00120, Italy

<sup>7</sup> European Southern Observatory, Avda. Alonso de Cordoba 3107, Casilla 19001, Santiago, Chile

**Abstract.** Here we present survey of proper motion stars towards the Galactic Bulge and an adjacent plane region base on VISTA-VVV data. The searching method based on cross-matching photometric  $K_S$ -band CASU catalogs. The most interesting discoveries are shown.

**Key words.** Stars: low-mass stars and Brown dwarfs – Proper motion – Infrared: Surveys

### 1. Introduction

High proper motion searches is the most widespread method of revealing new solar neighbors, as nearby stars generally have larger proper motions than those more distant. The Galactic bulge and plane are referred as the zone of avoidance, because they contain very high stellar densities down to faint limiting magnitudes, and also regions of dark molecular clouds, nebulosity, as well as regions of current star formation. Most of nearby stars are found outside these regions. Although, recent discoveries of nearby UCDs in Galactic

plane, DENIS J081730.0-615520 (Artigau et al. 2010), UGPS J072227.51-054031.2 (Lucas et al. 2010) and Luhman 16 (Luhman 2013), shows that these regions may contain other highly interesting, unusual, and nearby objects.

### 2. VISTA-VVV

The ESO public survey VISTA Variables in the Vía Láctea (VVV) targets 562 square degree in the Galactic Bulge and an adjacent plane region (Minniti et al. 2010; Saito et al. 2012). VVV provides multi-epoch  $K_S$ -band images which allow searching for high proper motion objects. Providing better spatial resolution

---

*Send offprint requests to:* M. Gromadzki

and deeper (4) magnitude range than 2MASS, VVV has bigger potential of finding free floating very low-mass stars, brown dwarfs and also common proper motion companions of previously known high proper motion stars. The VVV data are processed by the Cambridge Astronomical Unit (CASU)<sup>1</sup>. CASU provide images and catalogs with aperture photometry and astrometry for VVV users. The VVV data are also publicly available through the VISTA Science Archive (VSA)<sup>2</sup>. More technical information about the VVV survey can be found in (Saito et al. 2012) and (Soto et al. 2013).

### 3. Method

The searching method we used is based on cross-matching, with a scaled radius of 5 arcsec per year, photometric  $K_S$ -band CASU catalogs obtained for 4 different epochs. Method was developed by Folkes et al. (in preparation). Next, the candidates were visually inspected on VVV, 2MASS and SuperCOSMOS images.

### 4. Current status

Until Jun 2013, we have examined 31 % of VVV area and we have detected 400 objects with proper motion higher than 0.05 arcsec per year and  $K_S < 13.5$ . This sample includes dozens of completely new high proper motion stars and common proper motion pairs, some common proper motions companions of previously known high proper motion stars, and one spectroscopically confirmed brown dwarf (Beamín et al., submitted to A&A). During visual inspection of SuperCOSMOS images we have also identified 3 white dwarf common proper motion companions of previously known high proper motion stars.

The examples of most interesting discoveries are presented on Figure 1. SuperCOSMOS  $B_j$  and  $R_2$ , 2MASS  $K_S$  and VISTA-VVV first and last  $K_S$  epochs images were obtained around 1974, 1992, 2000, 2010 and 2012, respectively.

*Acknowledgements.* We gratefully acknowledge use of data from the ESO Public Survey programme

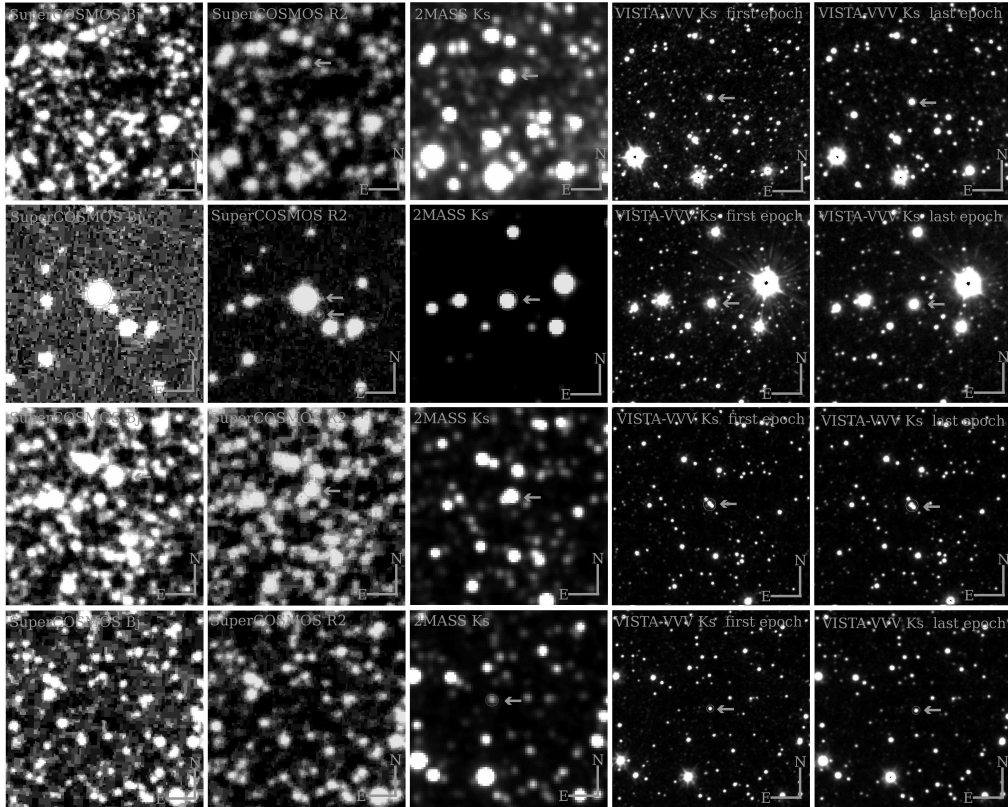
ID 179.B-2002 taken with the VISTA telescope, data products from the Cambridge Astronomical Survey Unit, and funding from the BASAL CATA Center for Astrophysics and Associated Technologies PFB-06. This publication makes use of data products from the Two Micron All Sky Survey, which is a joint project of the University of Massachusetts and the Infrared Processing and Analysis Center, funded by the National Aeronautics and Space Administration and the National Science Foundation. Our research has also made use of data obtained from the SuperCOSMOS Science Archive, prepared and hosted by the Wide Field Astronomy Unit, Institute for Astronomy, University of Edinburgh, which is funded by the UK Science and Technology Facilities Council. MG is financed by the GEMINI-CONICYT Fund, allocated to Project 32110014. RK and JB acknowledge partial support from FONDECYT through grants No 1130140 and 1120601 respectively. J.C.B. acknowledges support from a PhD Fellowship from CONICYT. D.M. acknowledges support by Project FONDECYT No. 1130196. MG is also grateful to organiser of "Brown Dwarfs come of Age" conference for partial cover expenses of his participation in the conference.

### References

- Artigau, É., Radigan, J., Folkes, S., et al. 2010, *ApJ*, 718, L38
- Lucas, P. W., Tinney, C. G., Burningham, B., et al. 2010, *MNRAS*, 408, L56
- Luhman, K. L. 2013, *ApJ*, 767, L1
- Minniti, D., Lucas, P.W., Emerson, J.P. et al. 2010, *New Astronomy*, 15, 433
- Saito, R. K., Hempel, M., Minniti, D., et al. 2012, *A&A*, 537, A107
- Soto, M., Barbá, R., Gunthardt, G., et al. 2013, *A&A*, 552, A101

<sup>1</sup> <http://casu.ast.cam.ac.uk/vistasp/>

<sup>2</sup> <http://horus.roe.ac.uk/vsa/index.html>



**Fig. 1.** Examples of most interesting discoveries. Row 1: High proper motion ( $0.81''/\text{yr}$ ) M dwarf towards the Galactic Bulge. Row 2: MD+WD common proper motion binary, WD is visible only on SuperCOSMOS images ( $B_1=20.3$ ,  $R_2=21.1$ ). Row 3: Close common proper motion MD+MD binary ( $d=1.6''$ ) resolved on VISTA-VVV images. Row 4: Brown dwarf towards the Galactic Bulge, object is not visible on SuperCOSMOS images.