

Development of an interprofessional education training course for the Safe High Acuity Adult Retrieval Programme (SHAARP)

Alinier G, Campbell C, Fawzy I, Al Shaikh L, Meyer J, Abdaljawad W
Hamad Medical Corporation, Doha, Qatar

Disclosures: Professor at the University of Hertfordshire, UK
 Visiting Fellow, University of Northumbria, UK

Doha, Qatar, 4th-6th December 2015

Transfer of high-acuity patients:

- Moving patients between Doha's largest general hospital and other hospitals.
- SHAARP = multidisciplinary team
 - Ambulance Paramedic
 - Critical Care Paramedic
 - ICU physician




SHAARP: A risky business

- Patient & Team in a resource limited setting.
- Unfamiliar environment.
- No help readily available.
- Unusual multidisciplinary team.
- High risk/Low frequency activity.

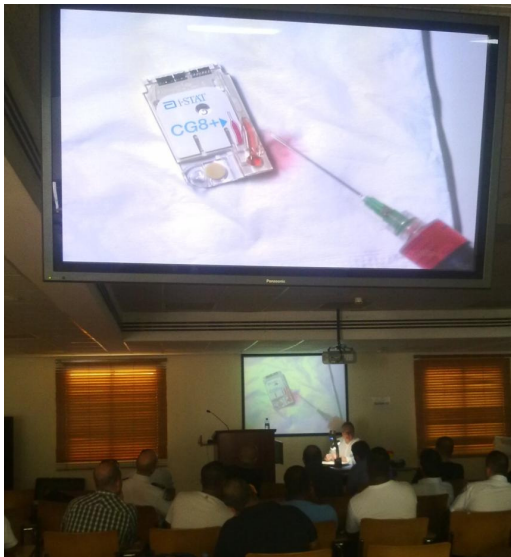


Interprofessional education programme:

- Pre-course reading + pre-test

Start Date	Study Unit	Nr Hrs
Day 1	Welcome and introduction to the course	1
	Crisis Resource Management and communication	1
	Case-based mental modeling: Patient care scenarios	2
	LUNCH	1
	Equipment skills workshop	3
Day 2	Assessment MCQ	1
	Simulation scenarios with debrief	2.5
	LUNCH	1
	Simulation scenarios with debrief	2.5
	Debriefing and course feedback 	1

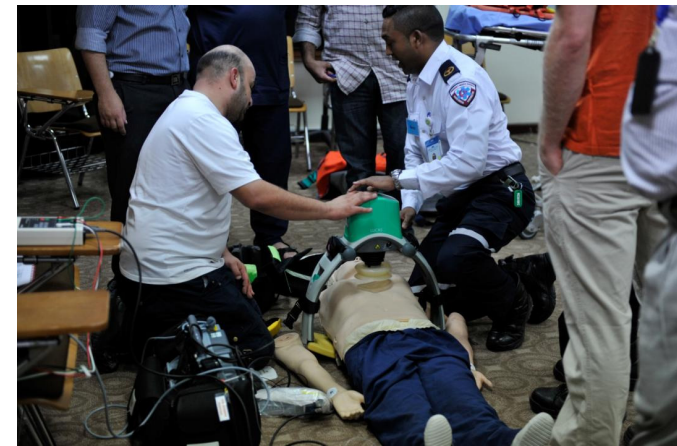
Multiprofessional activities:



Lectures:

- SHAARP activation
- Documentation
 - CRM
- TeamSTEPPS

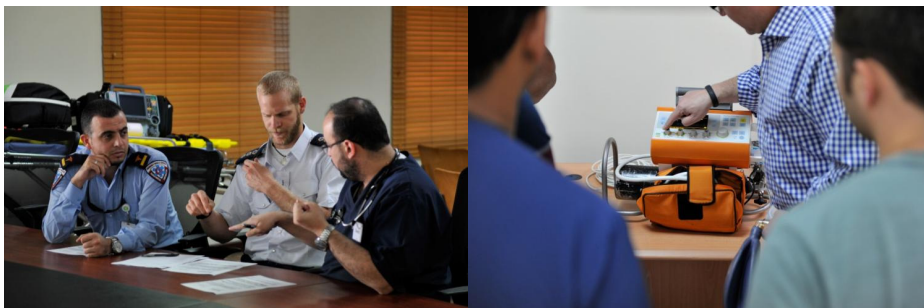
Multiprofessional activities:



Skills stations

Multiprofessional activities:

- ICU physicians learn about:
 - AP & CCP scope of practice
 - Ambulance environment
 - Ambulance equipment



Multiprofessional activities:

- Ambulance Service staff learn about:
 - New equipment
 - Invasive patient monitoring
 - Working with ICU physicians



SHAARP: Critical decisions

- Is the patient fit/stable for transport?
- Are all tests up to date?
- Should other procedures be performed before?
- What could happen during the transfer?
- Is the receiving facility ready?
- Has the family consented?
- ...

Many pitfalls!



Emphasis on Crisis Resource Management

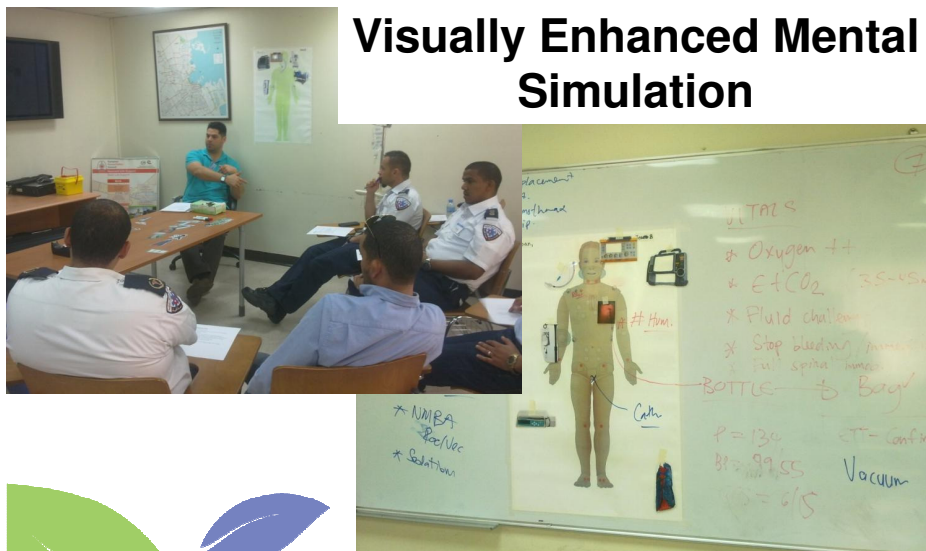
- | | |
|----------------------------|--------------------------------------|
| 1. Know the environment | 8. Use all available information |
| 2. Anticipate and plan | 9. Prevent & manage fixation errors |
| 3. Use good teamwork | 10. Cross (double) check |
| 4. Call for help early | 11. Exercise leadership/followership |
| 5. Use cognitive aids | 12. Re-evaluate repeatedly |
| 6. Distribute the workload | 13. Mobilize all available resources |
| 7. Communicate effectively | 14. Allocate attention wisely |
| | 15. Set priorities dynamically |

(Rall & Gaba, 2005; Gaba et al., 2001)



Interprofessional activities:

Visually Enhanced Mental Simulation



Interprofessional activities:

High-fidelity scenario-based simulation: Assessment/Retrieval/Handover/Transfers



Interprofessional activities:



Interprofessional activities:



Interprofessional activities:



Interprofessional activities:

Facilitated team debriefing



The results in 2 years:

- Great collaboration between MICU and Ambulance Service
- +160 ground transfers
- +32 aeromedical transfers
- No adverse event



Conclusions:

SHAARP Course

- Highlights value of team approach & IPE.
- Promotes team formation and cohesion.
- Facilitated equipment and environment familiarisation.
- Promotes patient safety.



Thank you!

Questions?

galinier@hamad.qa



Acknowledgments:

The SHAARP team staff for making themselves available at short notice while on/off