

A new near-IR window of low extinction in the Galactic plane[★]

Dante Minniti^{1,2,3}, Roberto K. Saito⁴, Oscar A. Gonzalez⁵, Javier Alonso-García^{6,2}, Marina Rejkuba^{7,8}, Rodolfo Barba⁹, Mike Irwin¹⁰, Roberto Kammer⁴, Phillip W. Lucas¹¹, Daniel Majaess^{12,13}, and Elena Valenti⁷

¹ Departamento de Física, Facultad de Ciencias Exactas, Universidad Andres Bello, Av. Fernandez Concha 700, Las Condes, Santiago, Chile

² Instituto Milenio de Astrofísica, Santiago, Chile

³ Vatican Observatory, V00120 Vatican City State, Italy

⁴ Departamento de Física, Universidade Federal de Santa Catarina, Trindade 88040-900, Florianópolis, SC, Brazil

⁵ UK Astronomy Technology Centre, Royal Observatory, Blackford Hill, Edinburgh EH9 3HJ, UK

⁶ Unidad de Astronomía, Facultad Cs. Básicas, Universidad de Antofagasta, Avda. U. de Antofagasta 02800, Antofagasta, Chile

⁷ European Southern Observatory, Karl-Schwarzschild-Str. 2, D85748 Garching bei München, Germany

⁸ Excellence Cluster Universe, Boltzmann-Str. 2, D85748 Garching bei München, Germany

⁹ Departamento de Física y Astronomía, University of La Serena, La Serena, Chile

¹⁰ Department of Astronomy, Cambridge University, Cambridge, UK

¹¹ Department of Astronomy, University of Hertfordshire, Hertfordshire, UK

¹² Mount Saint Vincent University, Halifax, Nova Scotia, Canada

¹³ Saint Mary's University, Halifax, Nova Scotia, Canada

¹⁴ Pontificia Universidad Católica de Chile, Instituto de Astrofísica, Av. Vicuña Mackenna 4860, Santiago, Chile

Received XXX XX, 2017; accepted XXX XX, 2017

ABSTRACT

Aims. The windows of low extinction in the Milky Way (MW) plane are rare but important because they enable us to place structural constraints on the opposite side of the Galaxy, which has hitherto been done rarely.

Methods. We use the near-infrared (near-IR) images of the VISTA Variables in the Vía Láctea (VVV) Survey to build extinction maps and to identify low extinction windows towards the Southern Galactic plane. Here we report the discovery of VVV WIN 1713–3939, a very interesting window with relatively uniform and low extinction conveniently placed very close to the Galactic plane.

Results. The new window of roughly 30 arcmin diameter is located at Galactic coordinates $(l, b) = (347.4, -0.4)$ deg. We analyse the VVV near-IR colour-magnitude diagrams in this window. The mean total near-IR extinction and reddening values measured for this window are $A_{K_s} = 0.46$ and $E(J - K_s) = 0.95$. The red clump giants within the window show a bimodal magnitude distribution in the K_s band, with peaks at $K_s = 14.1$ and 14.8 mag, corresponding to mean distances of $D = 11.0 \pm 2.4$ and 14.8 ± 3.6 kpc, respectively. We discuss the origin of these red clump overdensities within the context of the MW disk structure.

Key words. Galaxy: disk — Galaxy: structure — dust, extinction — surveys

1. Introduction

Baade's window (Baade & Gaposchkin 1963) is a low extinction $A_V \sim 1.5$ region (Schlegel et al. 1998, Schlafly et al. 2011) of half a degree in size in the direction of the Milky Way (MW) bulge $(l, b) = (+1^\circ, -4^\circ)$. This region has historically been used as a fundamental reference for the study of the stellar populations of the Galactic bulge. The search for similar low extinction regions, particularly at low latitudes closer to the Galactic plane ($|b| < 1^\circ$ deg), is an important task that can facilitate precise studies of the stellar populations at larger distances along the line of sight, whilst minimising the difficulties arising from differential extinction and completeness.

Large and non-uniform reddening confuses studies of stellar populations in the Galactic plane, resulting sometimes in conflicting conclusions with regard to the structure of our Galaxy (e.g. Vallée 2014, 2017, and references therein). Additional low latitude windows with low extinction can be useful for a variety of reasons especially at shorter wavelengths (as was the case for

Baade's window in the bulge), such as to verify the next generation models of star counts in the MW disk, to identify distant sources in multi-wavelength studies and to enable their spectroscopic follow-up, to use as a calibration for other more reddened fields, to check the behaviour of the extinction law along the line of sight, and to measure the total transparency of our Galaxy.

Existing extinction maps (e.g. Schlegel et al. 1998, Schlafly et al. 2011) show a few places of low extinction near the inner Galactic plane located at latitudes $1^\circ < |b| < 2^\circ$. However, given the thin-disk scale height of $h_z = 300$ pc (Jurić et al. 2008), a line of sight towards $|b| > 1$ deg departs from the plane at large distances (> 20 kpc) and thus is not as useful for mapping the far side of the MW disk.

The VISTA Variables in Vía Láctea (VVV) near-infrared (near-IR) imaging survey has recently completed mapping of a 562 sq. deg. area of the MW bulge and the adjacent plane with the Visible and Infrared Survey Telescope for Astronomy (VISTA), operated by the European Southern Observatory (ESO) at the Cerro Paranal Observatory in Chile. The whole area was imaged twice in $ZYJHK_s$ filters, and more than 50 times in K_s band (Minniti et al. 2010, Saito et al. 2012), providing the

[★] Based on observations taken within the ESO VISTA Public Survey VVV, programme ID 179.B-2002

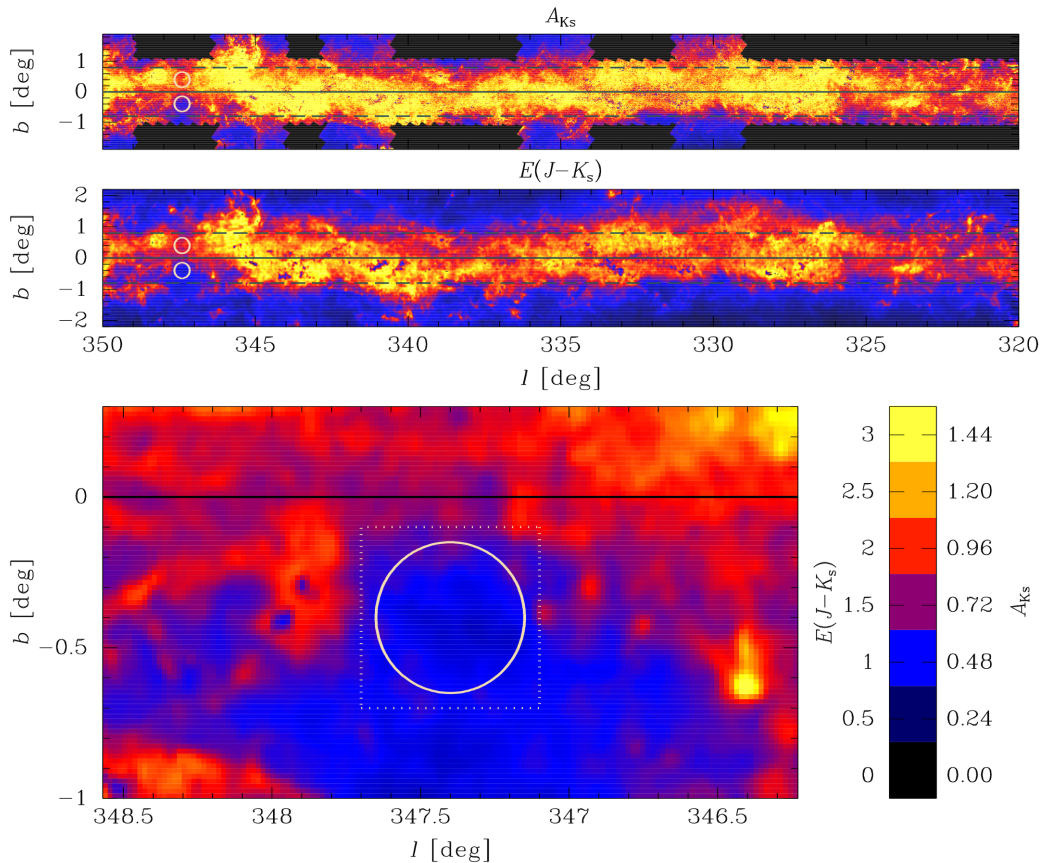


Fig. 1. Extinction maps for the inner Galactic plane. Top: The AKS extinction map, produced using the method of Majewski et al. (2011), covering $342 < l < 352$, $-2 < b < +2$ deg. Middle: The EJKS map, produced using the method of Gonzalez et al. (2011) for the same region (see Section 2). Horizontal lines are at $b = 0$, indicating the Galactic plane, and at $|b| = 0.8$. Circular areas mark the region around the window and the control field (see Section 2). In the bottom panel is the EJKS map zoomed in the window's region. The squared and circular areas marked in white are described in Figs. 3 and 4. The horizontal solid line indicates the Galactic plane. The vertical bar shows the colour code for each map.

deepest and highest spatial resolution near-IR data set available for the study of the inner Milky Way.

The distribution of red clump (RC) stars (core helium burning giants) in the VVV data has been used to trace the inner Galactic bar (Gonzalez et al. 2011a) and the boxy or peanut shape bulge (Wegg & Gerhard 2013), to map the edge of the MW stellar disk (Minniti et al. 2011), to study the interstellar extinction law at low latitudes (e.g. Nataf et al. 2016, Majaess et al. 2016, Alonso-Garcia et al. 2017), and to make detailed maps of these regions to study the extinction spatial distribution (Gonzalez et al. 2011b, 2012, Schultheis et al. 2014, Soto et al. 2013, Minniti et al. 2014). Recently, when exploring the VVV density and extinction maps, we found VVV WIN 1713–3939, a new window with low and relatively uniform extinction at $(l, b) = (347.4^\circ, -0.4^\circ)$, which is the subject of the present study.

2. A new Galactic window

We performed a search for low latitude, low-reddening windows in the Galactic plane using the multi-colour $ZYJHK_s$ images and photometry of the disk and bulge fields in the region $(-2.25^\circ < b < 2.25^\circ, 295^\circ < l < 10^\circ)$ observed by the VVV survey (Saito et al. 2012). We used two different sets of reddening maps that have been independently made. The first reddening map was constructed following the method described in Gonzalez et al. (2011, 2012), and computed in units of colour excess $E(J - K_s)$ (hereafter called “EJKS” map). The latter is based on the Rayleigh-Jeans colour excess method (e.g. Majewski et al. 2011, Nidever et al. 2012) and computed in terms of the total extinction A_{K_s} (hereafter “AKS” map). Visual inspection of these maps reveals a window of considerably lower extinction with respect to the neighbouring regions located towards the in-

ner regions of the MW plane at $(l, b) = (347.4^\circ, -0.4^\circ)$ (see Fig. 1). This is the only large region of uniformly low extinction at $|b| < 0.8$ seen along across all of the maps.

This window can also be seen in the Spitzer Galactic Legacy Infrared Mid-Plane Survey Extraordinaire (GLIMPSE) survey images (Benjamin et al. 2003, Churchwell et al. 2009), in the Planck R2-HFI maps (Planck collaboration 2011), in the CO maps of Dame et al. (2001) as well as in the density maps of Nidever et al. (2012) and Soto et al. (2013). In all cases, the window can be identified not only in A_K values, but also as an enhancement in the number of detected stars. A similar increment in the source density is also seen in the Gaia optical data (Gaia Collaboration et al. 2016).

VVV WIN 1713–3939 has a roughly circular shape of $30'$ diameter size, centred at $(l, b) = (347.4^\circ, -0.4^\circ)$ deg. A detailed view of VVV WIN 1713–3939 is presented in Fig. 3. For a Galactic latitude of $b = -0.4$ deg, the projected vertical height of the line of sight below the Galactic plane at a distance of $D = 8$ kpc corresponds to $z = -56$ pc, and at a distance of $D = 14$ kpc, this height is $z = -98$ pc, thus making it ideal to trace the properties of the thin disk beyond the Galactic bar.

Reading from the AKS extinction maps, the mean extinction in the window (integrated to a distance of ~ 10 kpc) is $A_{K_s} = 0.62 \pm 0.07$. Reading from the EJKS map, the corresponding mean reddening of the window is $E(J - K_s) = 0.96 \pm 0.09$, which is equivalent to $A_{K_s} = 0.46 \pm 0.04$. In general, both maps are in good agreement, however the AKS maps tend to show higher values than EJKS. A pixel to pixel division (AKS/EJKS map, both in units of A_{K_s}) results in a median value of 1.04 ± 0.37 for $A_{K_s} < 1.2$, with larger scatter for increasing A_{K_s} values.

A comparison with the maps of Schlegel et al. (1998) and Schlafly et al. (2011) reveals that they obtain larger values for the

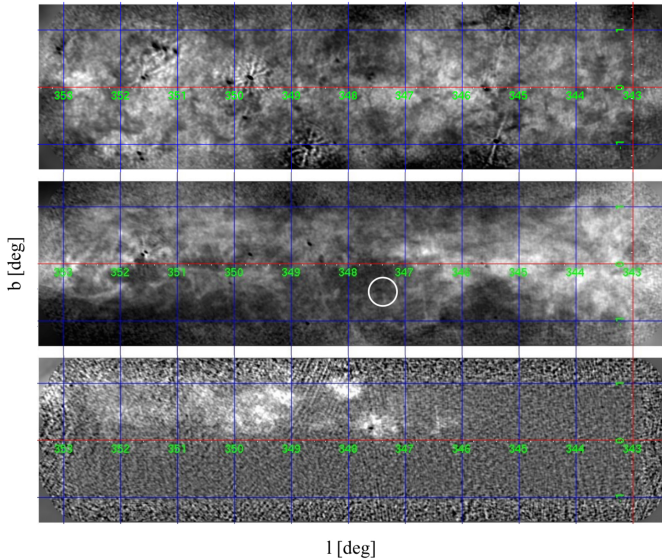


Fig. 2. HI maps at different velocities for the inner Galactic plane, for $342.6 < l < 353.4$ and $-1.4 < b < 1.4$. Top: HI emission for velocities between -15 to -20 km/s. Middle: Same for velocities between -30 to -42 km/s. The location of the low extinction window is indicated with the circle. Bottom: Same for velocities between -150 to -185 km/s.

total extinction in this direction, $A_{K_s} = 1.4$ and 1.6 , respectively. This systematic difference, in the sense that the A_{K_s} in the near-IR is generally lower than the A_{K_s} measured in the far-IR, is seen throughout the Galactic plane regions mapped by the VVV survey.

In order to interpret the colour-magnitude diagrams (CMDs) of VVV WIN 1713–3939 we compare it with a control field located at the same Galactic coordinates, but at the positive latitudes, i.e., centred at $(l, b) = (347.4, +0.4)$ deg (see Fig. 1). The Galactic warp is negligible at these longitudes (e.g. Momany et al. 2006, see their Fig. 9), thus the differences between the control field and the window are expected to be dominated by extinction variation along the line of sight ($\Delta K_s = 0.5$ mag). An examination of the density maps shows a higher density of sources within the window in all VVV filters when compared to the control field. For instance, in Z band which is the filter most affected by extinction, the stellar density in VVV WIN 1713–3939 is 2.7 times larger than that of the control field. There is a similar difference in stellar density observed in the optical Gaia data (Gaia Collaboration et al. 2016). The Gaia source density within the window area is three times larger than the control field. Also, the spatial distribution of the stellar overdensity seen in Gaia is in agreement with the location of the window seen in the extinction and density maps from VVV (see Figs. 3 and 4).

Figure 2 shows as example three HI maps at different velocities, illustrating the relative absence of emission in VVV WIN 1713–3939. The window in HI suggests a chance superposition of different sizable holes in the near and far side of the tangent point. At the tangent point in $l = 347.4$ deg (-185 km/s), where the HI density is expected to be higher, most of the gas appears to be located above the plane with $|b| > 0$ deg. The more recent search for Galactic HII regions using Wide-field Infrared Survey Explorer (WISE) data also shows a lack of sources in the low extinction window, and confirms that most known and new candidate HII regions are located above $b = 0$ deg for this Galactic longitude (Anderson, et al. 2014). However, lack of HI on its own does not necessarily mean absence of dust.

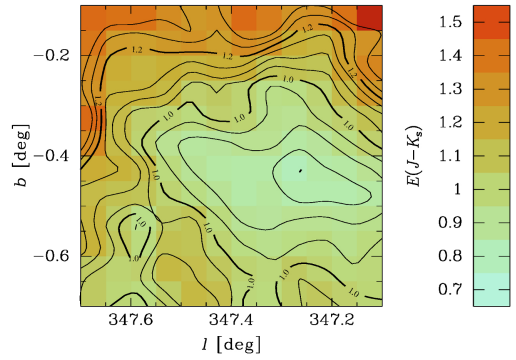


Fig. 3. Detailed view of VVV WIN 1713–3939. The map is $36' \times 36'$ in size, has a resolution of $3'$, and corresponds to the squared region marked in Fig. 1. The contour lines show levels of similar $E(J - K_s)$, in steps of 0.05 mag.

We note that in this window there is also a lack of integrated CO (1–0 emission line at 115 GHz) in the maps of Dame et al. (2001). For the future, a detailed three-dimensional (3-D) comparison with all dust tracers (HI, CO, HII and dark gas) along the line of sight to this window is needed.

3. The distribution of red clump stars through VVV WIN 1713–3939

Once we have identified the low extinction window, we can explore its stellar content along the line of sight, using RC stars as distance indicators. RC stars are core helium burning giants and excellent distance indicators, and have been used in multiple studies of Galactic structure, in particular those aimed at tracing the bar (e.g. Stanek et al. 1994; Gonzalez et al. 2011) and the structures towards the inner MW bulge (Nishiyama et al. 2005; Gonzalez et al. 2012). Also, Benjamin et al. (2005) devised a method to use RC giants from the GLIMPSE survey to investigate the structure of the Galactic plane. This method works well when using GLIMPSE data out to the distance of about 8 kpc (Benjamin et al. 2005), enabling mapping of the near-end of the Galactic bar and nearby spiral arms. However, beyond 8 kpc the GLIMPSE photometry is incomplete (see for example Fig. 5 of Nidever et al. 2012). Alternative distance indicators like variable stars such as RR Lyrae or Cepheids are interesting but of limited use in this case. The RR Lyrae stars represent old metal-poor populations, which are very rare if not absent in the MW disk. In the case of the Cepheids, they represent very young populations, but their surface density is low.

We produce the CMD of VVV WIN 1713–3939 and the control field using the VVV point spread function (PSF) catalogues described in detail in Alonso-García et al. (2015, 2017). One of the immediate advantages of a low extinction window is that it is possible to first inspect the observed CMD, minimising the effects from different assumptions regarding the extinction law in a de-reddened CMD. The K_s versus $(J - K_s)$ CMD for the $30'$ diameter window centred at $(l, b) = (347.4^\circ, -0.4^\circ)$ is shown in the left panel of Fig. 5. The observed CMD shows a well-defined double peaked RC feature. We suggest that these are indeed two structures along the line of sight. If this is the case, we expect to observe a jump in extinction from one RC to the other, with each RC getting progressively more reddened, consistent with the larger distances. This is qualitatively what is observed, judging by the CMD shown in Fig. 5.

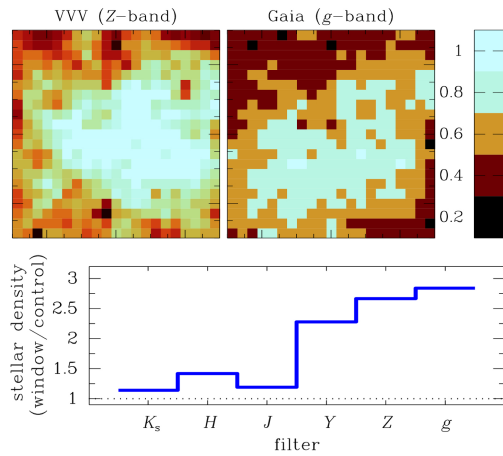


Fig. 4. Top: The same region of Fig. 3 as seen in the density maps of VVV (Z band) and Gaia (g band), normalised by the maximum value in each case. Vertical bar shows the colour code in the maps. Bottom: Total number of sources in the low extinction window divided by the number of sources in the control field for the VVV filters and g band from Gaia.

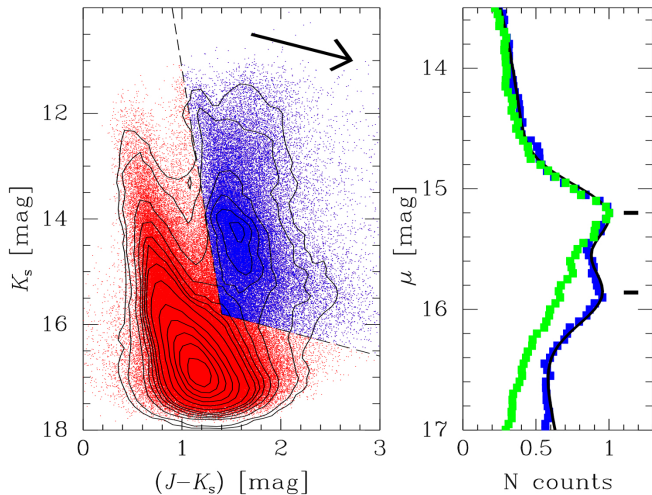


Fig. 5. Left: K_s versus $(J - K_s)$ CMD for the circular region around the window as shown in Fig. 1. The blue region was used to derive the RC mags and colours. The contours trace iso density levels. A reddening vector with the slope of $A_{K_s} = 0.484 \times E(J - K_s)$ is also shown. Right: Normalised density distribution of selected RC versus distance moduli of the low extinction window (blue squares) and of the comparison field (green squares).

The observed mean magnitudes and colours for these two RC peaks are $K_s, (J - K_s) = 14.07, 1.52$ and $K_s, (J - K_s) = 14.78, 1.62$, respectively. The inspection of the control field shows that only the brighter peak is present. In order to estimate the distances corresponding to the observed magnitudes, we adopt the intrinsic magnitudes and colours of $M_{K_s} = -1.58 \pm 0.03$ and $(J - K_s) = 0.60 \pm 0.01$ for the RC following Alves et al. (2002). These magnitudes include the model correction for population effects (relative age and metallicity differences from the Girardi & Salaris 2001 models) with respect to the Large Magellanic Cloud (LMC) where $M_{K_s} = -1.60 \pm 0.03$. This is of the same order as the offset found by Pietrzynski et al. (2002) between local dwarf galaxies and the MW disk ($\Delta K_{SHB} = 0.025$

	Brighter peak	Fainter peak
K_s [mag]	14.07 ± 0.05	14.78 ± 0.09
$(J - K_s)$ [mag]	1.52 ± 0.04	1.62 ± 0.14
$E(J - K_s)$ [mag]	0.92	1.02
A_K [mag]	$0.44^a (0.67)^b$	$0.49^a (0.74)^b$
D [kpc]	$11.0 \pm 2.4^a (10.1)^b$	$14.8 \pm 3.6^a (13.5)^b$

^(a) $A_K = 0.484 \times E(J - K)$ (final adopted value)
^(b) $A_K = 0.725 \times E(J - K)$ (Cardelli et al. 1989)

Table 1. Measured magnitudes and colours of the red clump peaks along the line of sight and their derived extinction and distances based on two different extinction laws.

mag, their Fig. 7). Furthermore, the mean values for the absolute magnitude of the RC in K band given by different authors agree to within < 0.1 mag (Alves 2000, Alves et al. 2002, Pietrzynski et al. 2003, Grocholski & Sarajedini 2002).

The EJKS reddening map in Fig. 1 traces the integrated extinction along the line of sight, which corresponds to a mean of $A_{K_s} = 0.46$ mag, and $E(J - K_s) = 0.95$ for VVV WIN 1713–3939. We cannot assume that this reddening is concentrated in any place along the line of sight, although it is probably more severe within the spiral arms. The reddening vector, as measured from the CMD of tile d075 (and adjacent tiles), appears to follow a reddening law slope that is shallower than the traditional Cardelli et al. (1989) value $R_V = 3.1$, shown to be adequate for higher Galactic latitudes. Therefore, we believe that distances computed using the steep slope from Cardelli et al. 1989 ($A_{K_s} = 0.725 \times E(J - K_s)$) would be underestimated. We use the method described in Alonso-García et al. (2017) to measure the slope of the reddening vector directly from the CMD as $A_{K_s} = (0.484 \pm 0.040) \times E(J - K_s)$. The slope is measured over all RC stars in the CMD and therefore it is a function only of the specific two-dimensional (2-D) location, but does not provide dependence on variations of the extinction law with the distance along the line of sight. This value is similar to $A_{K_s} = 0.43 \times E(J - K_s)$ measured toward the Galactic centre in Alonso-García et al. (2017), and almost identical to $A_{K_s} = 0.49 \times E(J - K_s)$ from the recent independent extinction law study by Majaess et al. (2016), obtained from RR Lyrae variables and two separate populations of Cepheids across the entire Galaxy. It is also slightly shallower than the value $A_{K_s} = 0.528 \times E(J - K_s)$ adopted by Nishiyama et al. (2009).

The RC luminosity function for the window (converted to distance modulus) is shown in the right panel of Fig. 5, along with the data of the comparison field. Adopting the reddening slope measured from the RCs as $A_{K_s} = 0.484 \times E(J - K_s)$, the distance moduli are computed as $\mu = -5 + 5 \log d(\text{pc}) = K_s - 0.484(J - K_s) + 1.870$, following the procedure described by Minniti et al. (2011). We applied a simple Gaussian + polynomial fit in order to obtain the RC mean distances. The distance moduli are $\mu = 15.20 \pm 0.47$ and 15.85 ± 0.53 , yielding mean RC distances of $D = 11.0 \pm 2.4$ kpc and 14.8 ± 3.6 kpc. For comparison, the distances adopting the relative extinctions (from Catelan et al. 2011) with a slope that follows the Cardelli et al. (1989) reddening law $A_{K_s} = 0.725 \times E(J - K_s)$ are also presented in Table 1.

The mean errors in the determination of the mean magnitudes for the different features can be derived from the fits to the distribution of distance moduli for the selected red clump stars (Fig. 5). Scaling these errors to the colours according to the reddening slope leads to typical colour uncertainties for the red

clumps of $\sigma(J - K_s) = 0.10$ mag. We have computed the distances using two different reddening slopes, in order to illustrate that in general the major source of uncertainties is due to the adoption of a specific reddening law, and not from the fits to the RC in the colour-magnitude diagrams. This is why it is important to make differential distance estimates whenever possible in Galactic plane studies.

4. Mapping distant features in the Galactic disk

The low reddening of VVV WIN 1713–3939 provides us with the opportunity to investigate the entire extension of the disk. Such a study is indeed difficult elsewhere because of the very large extinction at low latitude regions, which introduces severe incompleteness of the main CMDs features. The bottom panel of Fig. 4 illustrates that the number of sources in the window is significantly higher for the relatively bluer passbands.

Figure 6 shows the schematic map of the MW adapted from Vallée (2014), indicating the line of sight towards the window. This picture is in agreement with the schematic face-on view of our Galaxy from Drimmel & Spergel (2001) based on the analysis of near-IR and far-IR data sets. The positions of the RC peaks are also marked.

The most important conclusion from this comparison is that our measured distances match fairly well with those in the graphical representation of the Milky Way. The closest RC, at a mean distance of $D = 11.0$ kpc (which is also seen in the control field), is consistent with the expected distance to the Galactic bar at this latitude (Wegg et al. 2015). This line of sight intercepts the bar at a projected distance of $D \sim 3.5$ kpc from the Galactic centre, approximately where the far side of the Sagittarius arm is expected to start.

The second and faintest RC is at $D = 14.8$ kpc from the Sun and is not seen in the control field luminosity function. A possible interpretation that follows from the comparison in Fig. 6 is that this clump traces the location of the far side of the Norma arm (or even the Scutum-Centaurus arm) along the line of sight, not detected in the control field because of the high extinction. In such a case, the line of sight towards the window intercepts the near side of the Norma arm at a projected distance of about $D = 7$ kpc from the Galactic centre. Another possibility is that this peak corresponds to the overall background disk distribution, which would appear narrower due to incompleteness at the faintest magnitudes.

Altogether, our results suggest that VVV WIN 1713–3939 is suitable for studying the overall structure of the disk, potentially tracing important features (such as spiral arms and the general disk density distribution) to constrain our current representation of the far side of the Galaxy. Unfortunately, the choice of the extinction law shrinks or expands the distance scale, but we argue that we have a qualitatively good agreement with the Galactic image of Figure 6. We note that the Nishiyama et al. (2009), Majaess et al. (2016) or Alonso-García et al. (2017) selective-to-total extinction ratio laws scale better to this picture than steeper options (e.g. Cardelli et al. 1989, Rieke & Lebofsky 1985).

5. Conclusions

We have discovered VVV WIN 1713–3939, a low extinction window in the inner plane of the Milky Way. We show that it is possible to use this window to chart the innermost region of the disk, placing structural constraints on the other side of the Galaxy. In the past our ability to perform such studies using stellar sources has been limited, if not impossible, due to the large

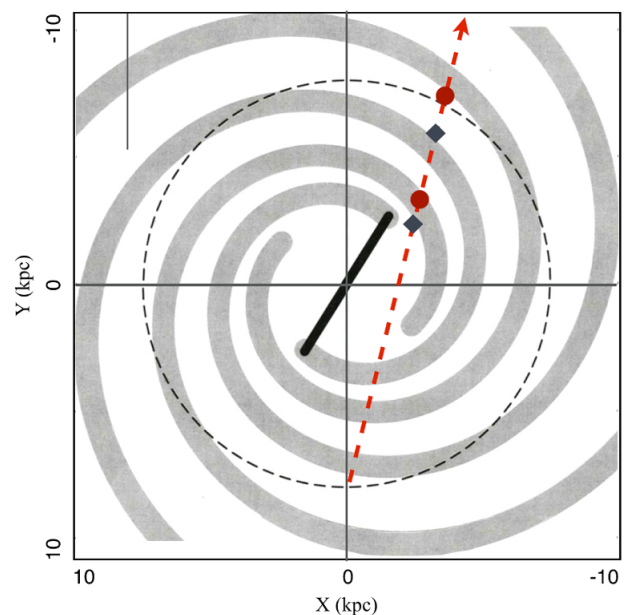


Fig. 6. Schematic map of the MW adapted from Vallée (2014) indicating the position of the Sun and the line of sight through the window. We adopted a distance to the Galactic centre of $R_0 = 8$ kpc. According to this picture, the line of sight should pass through the Sagittarius arm and the end of the long bar, and the far side of the Norma and Scutum-Centaurus arms. Red circles mark corresponding distances for the main peaks using $A_{K_s} = 0.484 \times E(J - K_s)$. Using $A_{K_s} = 0.725 \times E(J - K_s)$ the distances are systematically shorter (black diamonds).

amounts of interstellar extinction in the Galactic plane. The new window has a roughly circular shape of $30'$ diameter size, centred at $(l, b) = (347.4, -0.4)$ deg. The extinction maps provide a mean extinction of $A_{K_s} = 0.46 \pm 0.04$ for this window, corresponding to $E(J - K_s) = 0.95$, and $E(B - V) = 1.45$. This is about $\Delta K_s = 0.5$ and $\Delta V = 4.5$ mag smaller extinction, on average, than its surrounding fields.

We then studied the stellar populations along the line of sight of this window (and a control field) using the deep near-IR CMDs from the VVV Survey, with the aim of estimating the distances from RC giants, known to be excellent distance indicators. We have computed the slope of the reddening law towards this line of sight, which appears to be shallower than the canonical extinction law of $R_V = 3.1$. We find the slope of the reddening vector is $A_{K_s} = (0.484 \pm 0.040) \times E(J - K_s)$, in agreement with Nishiyama (2009) and more recent studies (Schultheis et al. 2014, Nataf et al. 2016, Majaess et al. 2016, Alonso-García 2017).

Finally, the convenient location of this window allows us to gain a view of the far side of our Galaxy. Using the CMDs we can clearly identify two distant RCs along the line of sight. These stellar over-densities are located at mean distances of $D = 11.0 \pm 2.4$ kpc, and 14.8 ± 3.6 kpc (adopting our measured extinction law, which is similar to that of Nishiyama et al. 2009). These would correspond to the intersection with the Galactic bar and the far Norma (or the far Scutum-Centaurus) arm on the opposite side of the MW, respectively. An alternative interpretation of the most distant RC peak, that it traces the overall background disk population, cannot be excluded. Future studies including proper motion measurements and Cepheid variables to trace over-densities among young stellar populations can further probe the spiral structure of the Milky Way.

Acknowledgements. We gratefully acknowledge the use of data from the ESO Public Survey programme ID 179.B-2002 taken with the VISTA telescope, and data products from the Cambridge Astronomical Survey Unit (CASU). Support for the authors is provided by the BASAL Center for Astrophysics and Associated Technologies (CATA) through grant PFB-06, and the Ministry for the Economy, Development, and Tourism, Programa Iniciativa Científica Milenio through grant IC120009, awarded to the Millennium Institute of Astrophysics (MAS). R.K.S. acknowledges support from CNPq/Brazil through projects 308968/2016-6 and 421687/2016-9. R.K. acknowledges support from CNPq/Brazil. D.M., M.Z., R.B., and J.A.G. acknowledge support from FONDECYT Regular grants No. 1130196, 1140076, and 1150345, and Initiation grant No. 11150916, respectively. We are also grateful to the Aspen Center for Physics where our work was partly supported by National Science Foundation grant PHY-1066293, and by a grant from the Simons Foundation (D.M. and M.R.).

References

- Alonso-García, J., Dekany, I., Catelan, M., et al. 2015, *AJ*, 149, 99
 Alonso-García, J., Minniti, D., Catelan, M., et al. 2017, *ApJL*, 849, L13
 Alves, D., . 2000, *ApJ*, 539, 732
 Alves, D., Rejkuba, M., Minniti, D., & Cook, K. 2002, *ApJ*, 573, L51
 Anderson, L. D., et al. 2014, *ApJS*, 212, 1
 Baade, W., & Gaposchkin, C. H. P. 1963, *Evolution of stars and galaxies*, Harvard Univ. Press, Cambridge, Mass., p. 277
 Benjamin, R. A., Churchwell, E., Babler, B. L., et al. 2003, *PASP*, 115, 953
 Benjamin, R. A., Churchwell, E., Blaber, B. L., et al. 2005, *ApJ*, 630, L149
 Cardelli, J. A., Clayton, G. C., Mathis, J. S. 1989, *ApJ*, 345, 245
 Catelan, M., Minniti, D., Lucas, P. W., et al. 2011, *RR Lyrae Stars, Metal-Poor Stars, and the Galaxy*, 5, 145
 Churchwell, E., Babler, B. L., Meade, M. R., et al. 2009, *PASP*, 121, 213
 Dame, T. M., Hartmann, D., & Thaddeus, P. 2001, *ApJ*, 547, 792
 Drimmel, R., & Spergel, D., 2001, *ApJ*, 556, 181
 Gaia Collaboration, Brown, A. G. A., Vallenari, A., et al. 2016, *A&A*, 595, A2
 Girardi, L., & Salaris, M. 2001, *MNRAS*, 323, 109
 Gonzalez, O. A., Rejkuba, M., Minniti, D., et al. 2011, *A&A*, 534, L14
 Gonzalez, O. A., Rejkuba, M., Zoccali, M., et al. 2011, *A&A*, 530, A54
 Gonzalez, O. A., Rejkuba, M., Zoccali, M., et al. 2012, *A&A*, 543, 13
 Grenier, I. A., Casandjian, J.-M., & Terrier, R. 2005, *Science*, 307, 1292
 Grocholski, A. J., & Sarajedini, A. 2002, *AJ*, 123, 1603
 Jurić, M., Ivezić, Ž., Brooks, A., et al., 2008, *ApJ*, 673, 864
 Majaess, D., et al. 2016, *A&A*, 593, 124
 Majewski, S. R., Zasowski, G. & Nidever, D. L., 2011, *ApJ*, 739, 25
 McClure-Griffiths, N. M., et al. 2005, *ApJS*, 158, 178
 Minniti, D., Lucas, P. W., Emerson, J. P., et al. 2010, *New A*, 15, 433
 Minniti, D., Saito, R. K., Alonso-García, et al. 2011, *ApJ*, 733, L43
 Minniti, D., Saito, R., Gonzalez, O. A., et al. 2014, *A&A*, 571, A91
 Momany, Y., Zaggia, S., Gilmore, G., et al. 2006, *A&A*, 451, 515
 Nataf, D. M., Gonzalez, O. A., Casagrande, L., et al. 2016, *MNRAS*, 456, 2692
 Nidever, D. L., Zasowski, G., & Majewski, S. R. 2012, *ApJS*, 201, 35
 Nishiyama, S., Nagata, T., Baba, D., et al., 2005, *ApJLett*, 621, 105
 Nishiyama, S., Tamura, M., Hatano, H., et al. 2009, *ApJ*, 696, 1407
 Pietrzynski, G., Gieren, W., & Udalski, A. 2003, *AJ*, 125, 2494
 Planck Collaboration, Ade, P. A. R., Aghanim, N., et al. 2011, *A&A*, 536, A19
 Reid, M.J. et al. 2009, *ApJ*, 700, 137
 Rieke, G. H., & Lebofsky, M. J. 1985, *ApJ*, 288, 618
 Saito, R. K., Hempel, M., Minniti, D., et al. 2012, *A&A*, 537, A107
 Schultheis, M., Chen, B. Q., Jiang, B. W., et al. 2014, *A&A*, 566, 120
 Soto, M., Barbá, R., Gunthardt, G., et al. 2013, *A&A*, 552, A101
 Schlafly, E. F., & Finkbeiner, D. P., 2011, *ApJ*, 737, 103
 Schlegel, D. J., Finkbeiner, D. P., & Davis, M. 1998, *ApJ*, 500, 525
 Stanek, K. Z. 1996, *ApJ*, 460, L37
 Vallée, J. P., 2014, *ApJS*, 215, 1
 Vallée, J. P. 2017, *The Astronomical Review*, 13, 113